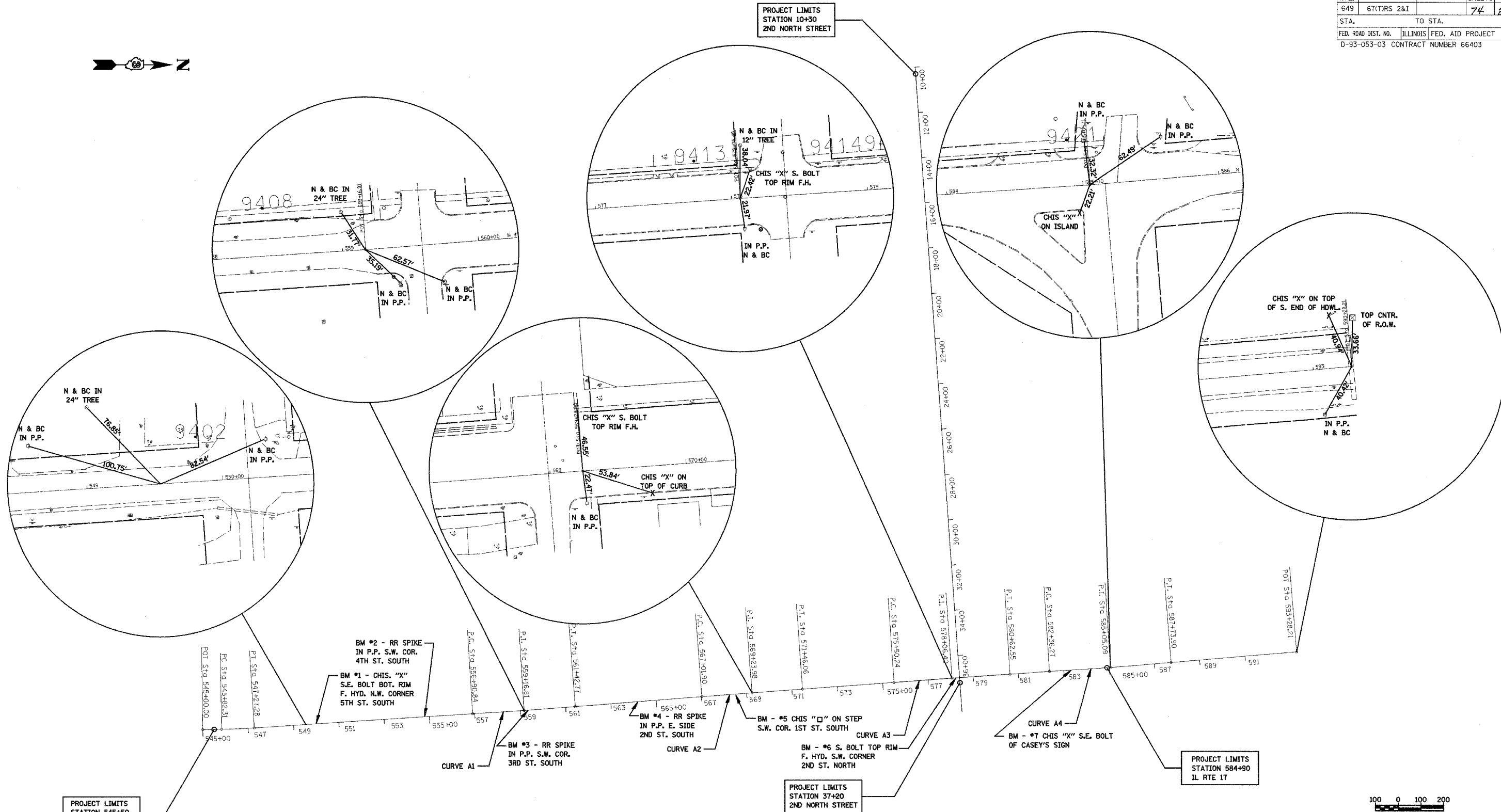
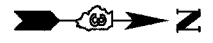


F.A. RTE.	SECTION	COUNTY	TOTAL SHEETS	SHEET NO.
649	67(T)RS 2&I		74	20
STA.		TO STA.		
FED. ROAD DIST. NO.		ILLINOIS FED. AID PROJECT		
D-93-053-03		CONTRACT NUMBER 66403		



PROJECT LIMITS
STATION 545+50
IL RTE 17

CURVE A1
P.I. STA. 559+16.81 (FD. NAIL)
DELTA = 0°48'41"
DEGREE = 0°10'46"
TANGENT = 225.97'
LENGTH = 451.92'
RADIUS = 31,912.29'
EXTERNAL = 0.80'
P.C. STA. 556+90.84
P.T. STA. 561+42.77

CURVE A2
P.I. STA. 569+23.98 (FD. NAIL)
DELTA = 0°20'26"
DEGREE = 0°04'36"
TANGENT = 222.08'
LENGTH = 444.16'
RADIUS = 74,726.06'
EXTERNAL = 0.33'
P.C. STA. 567+01.90
P.T. STA. 571+46.06

CURVE A3
P.I. STA. 578+06.40 (FD. NAIL)
DELTA = 0°23'05"
DEGREE = 0°04'30"
TANGENT = 256.16'
LENGTH = 512.31'
RADIUS = 76,297.01'
EXTERNAL = 0.43'
P.C. STA. 575+50.24
P.T. STA. 580+62.55

PROJECT LIMITS
STATION 37+20
2ND NORTH STREET

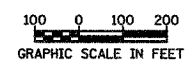
CURVE A4
P.I. STA. 585+05.09 (FD. NAIL)
DELTA = 1°01'23"
DEGREE = 0°11'25"
TANGENT = 268.82'
LENGTH = 537.63'
RADIUS = 30,109.51'
EXTERNAL = 1.20'
P.C. STA. 582+36.27
P.T. STA. 587+73.90

REVISIONS	
NAME	DATE

COLLINS ENGINEERS INC.
123 N. WACKER DR., SUITE 300
CHICAGO, IL 60606
(312) 704-9300
ILLINOIS PROFESSIONAL DESIGN FIRM
LICENSE NO. 184-000993

ILLINOIS DEPARTMENT OF TRANSPORTATION
ILLINOIS ROUTE 17 AND
2ND NORTH STREET
ALIGNMENT, TIES AND
BENCHMARK PLAN

SCALE: 1:200
DATE: MARCH, 2005
DRAWN BY: DR
CHECKED BY: JMH



FILE: \\s1846\16-04\18460006.dgn
DATE: 19 Oct 04 09:32