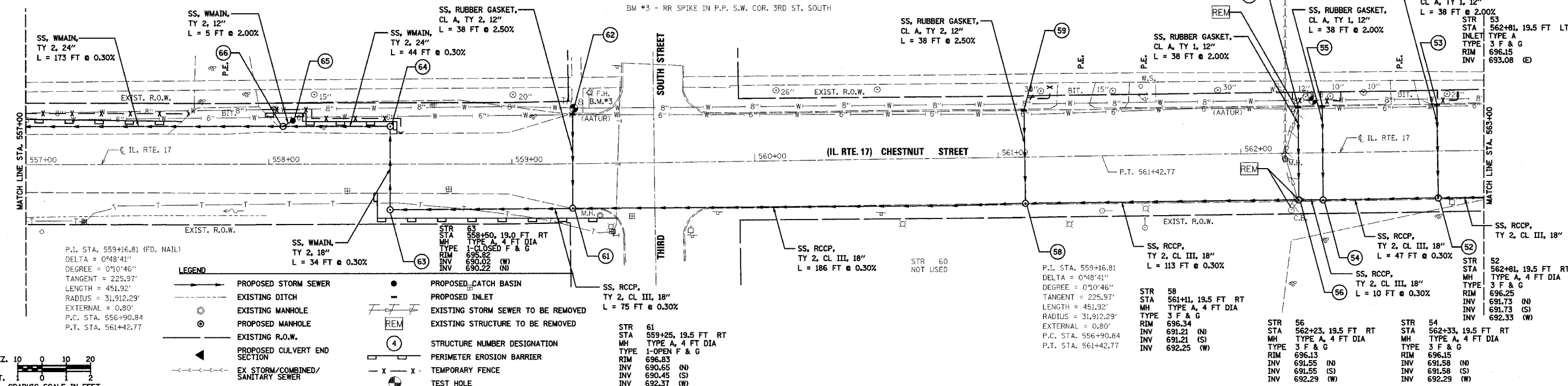


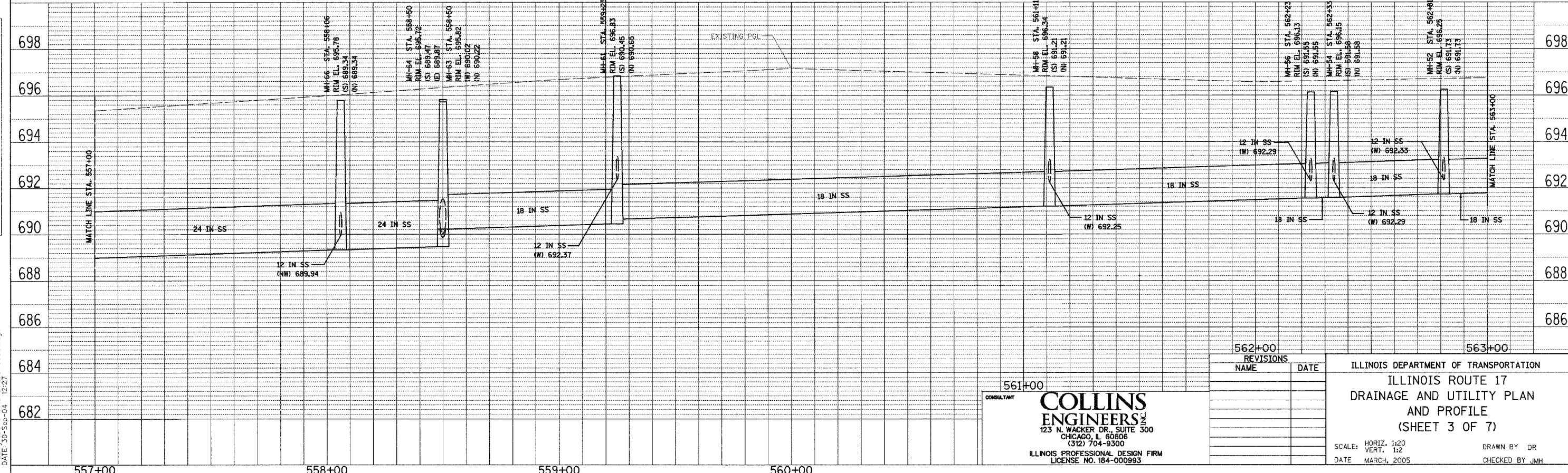
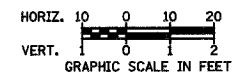
F.A. RTE.	SECTION	COUNTY	TOTAL SHEETS	SHEET NO.
649	67(T)RS-2&I	MARSHALL	74	23
STA. 557+00		TO STA. 563+00		
FED. ROAD DIST. NO. ILLINOIS		FED. AID PROJECT		
D-93-053-03		CONTRACT NUMBER 66403		

STR 66 STA 558+06, 15.6 FT LT MH TYPE A, 5 FT DIA TYPE 1-CLOSED F & G RIM 695.78 INV 689.34 (N) INV 689.34 (S) INV 689.94 (NW)	STR 65 STA 558+10, 18.0 FT LT CB TYPE A, 4 FT DIA TYPE 1-OPEN F & G RIM 695.78 INV 690.03 (SE)	STR 64 STA 558+50, 15.5 FT LT MH TYPE A, 5 FT DIA TYPE 1-CLOSED F & G RIM 695.72 INV 689.47 (S) INV 689.87 (E)	STR 62 STA 559+25, 19.5 FT LT INLET TYPE A TYPE 1-OPEN F & G RIM 696.33 INV 693.32 (E)	STR 59 STA 561+11, 19.5 FT LT INLET TYPE A TYPE 3 F & G RIM 696.36 INV 693.20 (E)	STR 57 STA 562+23, 19.5 FT LT INLET TYPE A TYPE 3 F & G RIM 696.10 INV 693.04 (E)	STR 55 STA 562+33, 19.5 FT LT INLET TYPE A TYPE 3 F & G RIM 696.10 INV 693.04 (E)
---	---	--	---	--	--	--



P.I. STA. 559+16.81 (FD. NAIL)
DELTA = 0°48'41"
DEGREE = 0°10'46"
LENGTH = 451.92'
RADIUS = 31,912.29'
EXTERNAL = 0.80'
P.C. STA. 556+90.84
P.T. STA. 561+42.77

- LEGEND**
- PROPOSED STORM SEWER
 - - - EXISTING DITCH
 - EXISTING MANHOLE
 - ⊙ PROPOSED MANHOLE
 - - - EXISTING R.O.W.
 - ◀ PROPOSED CULVERT END SECTION
 - - - EX STORM/COMBINED/SANITARY SEWER
 - PROPOSED CATCH BASIN
 - PROPOSED INLET
 - - - EXISTING STORM SEWER TO BE REMOVED
 - REM EXISTING STRUCTURE TO BE REMOVED
 - ④ STRUCTURE NUMBER DESIGNATION
 - - - PERIMETER EROSION BARRIER
 - x - x - TEMPORARY FENCE
 - ⊙ TEST HOLE



CONSULTANT
COLLINS ENGINEERS
123 N. WACKER DR., SUITE 300
CHICAGO, IL 60606
(312) 704-9300
ILLINOIS PROFESSIONAL DESIGN FIRM
LICENSE NO. 184-000993

REVISIONS	NAME	DATE

ILLINOIS DEPARTMENT OF TRANSPORTATION
ILLINOIS ROUTE 17
DRAINAGE AND UTILITY PLAN
AND PROFILE
(SHEET 3 OF 7)

SCALE: HORIZ. 1:20
VERT. 1:2
DATE MARCH, 2005

DRAWN BY DR
CHECKED BY JMH

DATE	
BY	
PLAN	
SURVEYED	
DESIGNED	
CHECKED	
DATE	

DATE	
BY	
PROFILE	
SURVEYED	
DESIGNED	
CHECKED	
DATE	

FILE: g:\3846 6-16-04_38460004.dgn
DATE: 30-Sep-04 12:27