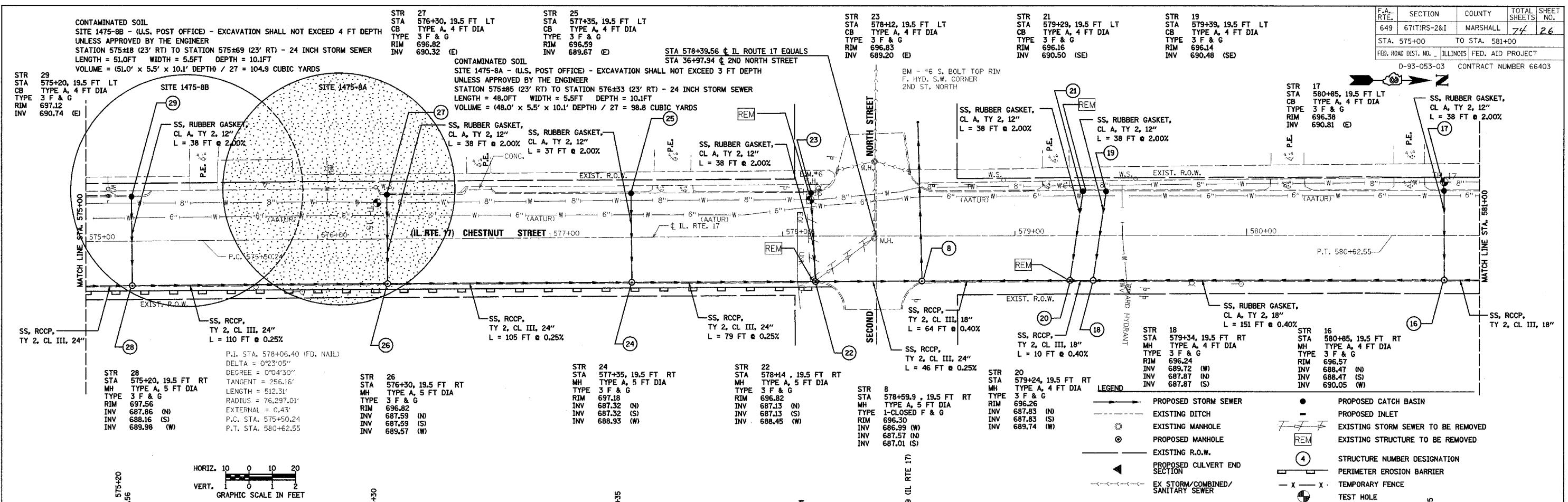
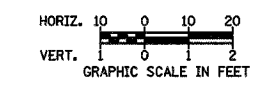


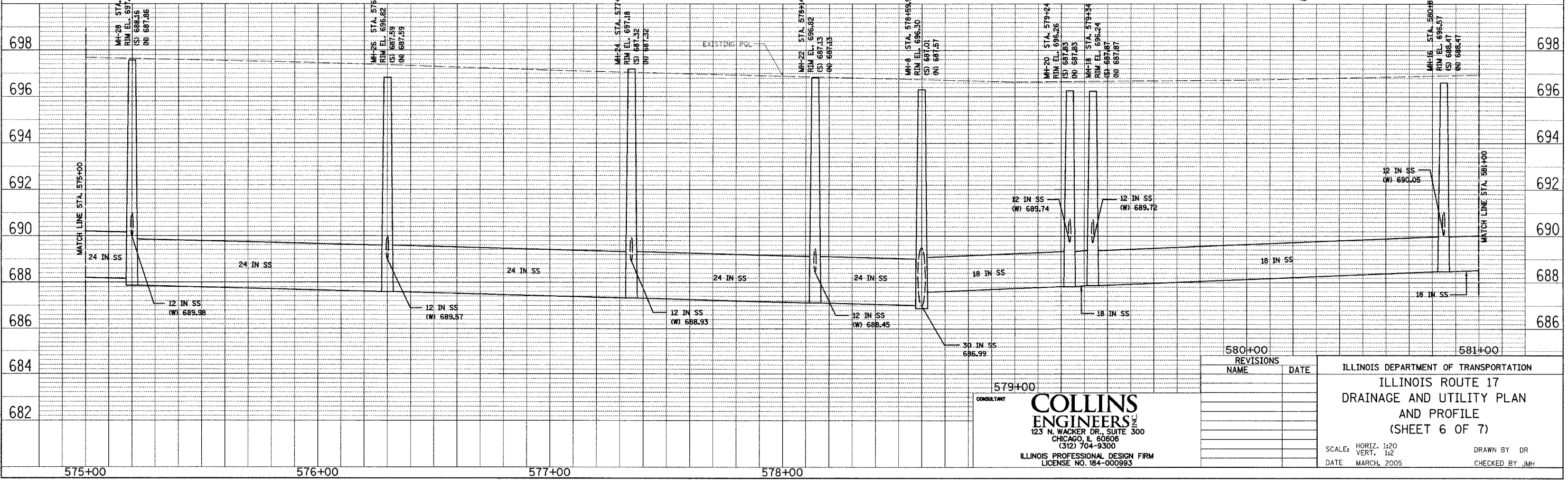
F.A. RTE.	SECTION	COUNTY	TOTAL SHEETS	SHEET NO.
649	671(RS)-2&I	MARSHALL	74	26
STA. 575+00		TO STA. 581+00		
FED. ROAD DIST. NO. - ILLINOIS FED. AID PROJECT				
D-93-053-03 CONTRACT NUMBER 66403				



P.I. STA. 578+06.40 (FD. NAIL)
 DELTA = 0°23'05"
 DEGREE = 0°04'30"
 TANGENT = 256.16'
 LENGTH = 512.31'
 RADIUS = 76,297.01'
 EXTERNAL = 0.43'
 P.C. STA. 575+50.24
 P.T. STA. 580+62.55



- LEGEND**
- PROPOSED STORM SEWER
 - EXISTING DITCH
 - EXISTING MANHOLE
 - PROPOSED MANHOLE
 - EXISTING R.O.W.
 - PROPOSED CULVERT END SECTION
 - EX STORM/COMBINED/SANITARY SEWER
 - PROPOSED CATCH BASIN
 - PROPOSED INLET
 - EXISTING STORM SEWER TO BE REMOVED
 - EXISTING STRUCTURE TO BE REMOVED
 - STRUCTURE NUMBER DESIGNATION
 - PERIMETER EROSION BARRIER
 - TEMPORARY FENCE
 - TEST HOLE



CONSULTANT
COLLINS ENGINEERS INC.
 123 N. WACKER DR., SUITE 300
 CHICAGO, IL 60606
 (312) 704-9300
 ILLINOIS PROFESSIONAL DESIGN FIRM
 LICENSE NO. 184-000993

580+00	REVISIONS	NAME	DATE
579+00			

ILLINOIS DEPARTMENT OF TRANSPORTATION
 ILLINOIS ROUTE 17
 DRAINAGE AND UTILITY PLAN
 AND PROFILE
 (SHEET 6 OF 7)

SCALE: HORIZ. 1:20
 VERT. 1:2
 DATE MARCH, 2005

DRAWN BY DR
 CHECKED BY JMH

PLAN
 SURVEYED, CHECKED, ALIGNED, CHECKED, PLANNED, CHECKED, P.T. OF WAY CHECKED, NO. OF WAY CHECKED, DATE, BY, DATE

PROFILE
 SURVEYED, CHECKED, GRADES, NOTED, STRUCTURE, NOTATIONS, CHFD, NO., DATE, BY, DATE

FILE: g:\3846-6-16-04_38460004.dgn
 DATE: 30-Sep-04 12:27