

F.A.P. RTE.	SECTION	COUNTY	TOTAL SHEETS	SHEET NO.
649	67(T)RS-2&I	MARSHALL	74	29
STA. 15+00		TO STA. 20+00		
FED. ROAD DIST. NO.		ILLINOIS FED. AID PROJECT		
D-93-053-03		CONTRACT NUMBER 66403		

PLAN	DATE
BY	
REVISIONS	
NO.	
DATE	
BY	
REVISIONS	
NO.	
DATE	

PROFILE	DATE
BY	
REVISIONS	
NO.	
DATE	
BY	
REVISIONS	
NO.	
DATE	

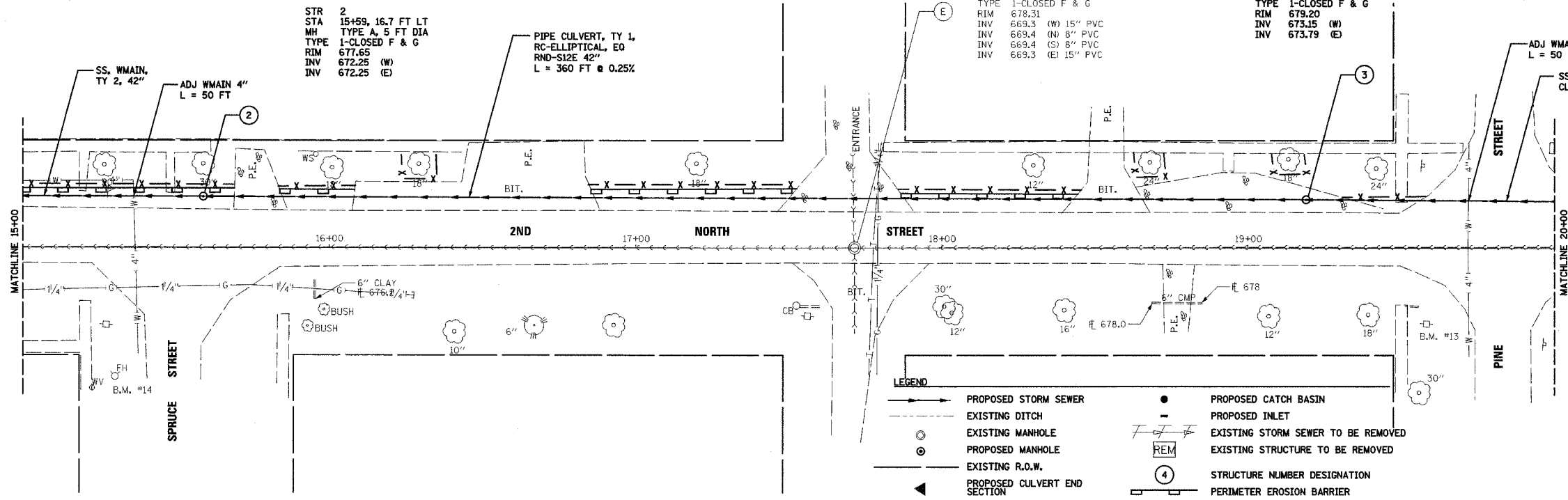
STR 2
STA 15+59, 16.7 FT LT
MH TYPE A, 5 FT DIA
TYPE 1-CLOSED F & G
RIM 677.65
INV 672.25 (W)
INV 672.25 (E)

STR E
STA 17+71, 0 FT LT
EX PCC MH 4 FT DIA
TYPE 1-CLOSED F & G
RIM 678.31
INV 669.3 (W) 15" PVC
INV 669.4 (N) 8" PVC
INV 669.4 (S) 8" PVC
INV 669.3 (E) 15" PVC

STR 3
STA 19+19, 15.8 FT LT
MH TYPE A, 5 FT DIA
TYPE 1-CLOSED F & G
RIM 679.20
INV 673.15 (W)
INV 673.79 (E)

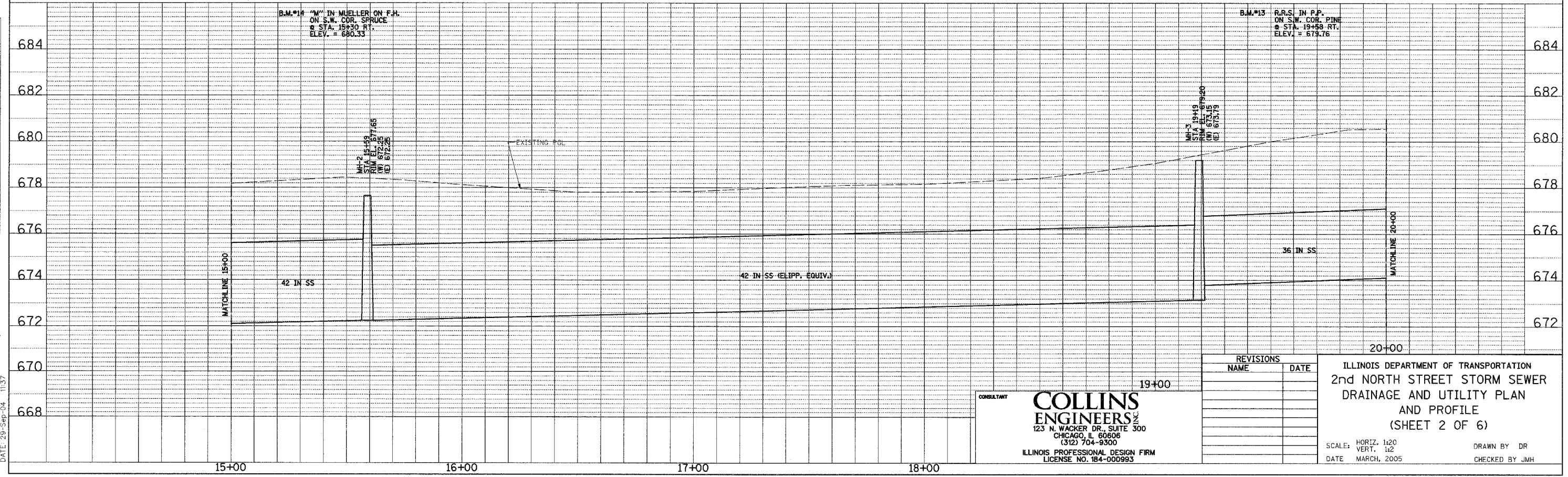
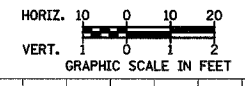
PIPE CULVERT, TY 1,
RC-ELLIPTICAL, EQ
RND-SIZE 42"
L = 360 FT @ 0.25%

ADJ WMAIN 4"
L = 50 FT
SS, RUBBER GASKET,
CL. A, TY 2, 36"



LEGEND

—●—	PROPOSED STORM SEWER	●	PROPOSED CATCH BASIN
- - -	EXISTING DITCH	-	PROPOSED INLET
○	EXISTING MANHOLE	—●—	EXISTING STORM SEWER TO BE REMOVED
⊙	PROPOSED MANHOLE	—	EXISTING STRUCTURE TO BE REMOVED
—	EXISTING R.O.W.	REM	STRUCTURE NUMBER DESIGNATION
▲	PROPOSED CULVERT END SECTION	④	PERIMETER EROSION BARRIER
—x—x—	EX STORM/COMBINED/SANITARY SEWER	—x—x—	TEMPORARY FENCE
		⊙	TEST HOLE



B.M.*14 "M" IN MUELLER ON F.H.
ON S.W. COR. SPRUCE
@ STA. 15+30 RT.
ELEV. = 680.33

B.M.*13 R.R.S. IN P.P.
ON S.W. COR. PINE
@ STA. 19+58 RT.
ELEV. = 679.76

MH-2
STA 15+59
RIM 677.65
INV 672.25 (W)
INV 672.25 (E)

MH-3
STA 19+19
RIM 679.20
INV 673.15 (W)
INV 673.79 (E)

FILE: 9:\3846\6-16-04\shis-2nd.dgn
DATE: 29-Sep-04 11:37

CONSULTANT
COLLINS ENGINEERS
123 N. WACKER DR., SUITE 300
CHICAGO, IL 60606
(312) 704-9300
ILLINOIS PROFESSIONAL DESIGN FIRM
LICENSE NO. 184-000993

REVISIONS	
NAME	DATE

ILLINOIS DEPARTMENT OF TRANSPORTATION
2nd NORTH STREET STORM SEWER
DRAINAGE AND UTILITY PLAN
AND PROFILE
(SHEET 2 OF 6)

SCALE: HORIZ. 1:20
VERT. 1:2
DATE MARCH, 2005

DRAWN BY DR
CHECKED BY JMH