

2ND NORTH STREET STORM SEWER

66403

F.A.P. RTE.	SECTION	COUNTY	TOTAL SHEETS	SHEET NO.
649	(67) T&T	MARSHALL	74	66
STA. 35+50		TO STA. 36+00		
FED. ROAD DIST. NO.		ILLINOIS FED. AID PROJECT		
10-93-053-01		CONTRACT NUMBER		

FINAL SURVEY PLOTTED AREAS CHECKED

DATE: \_\_\_\_\_ BY: \_\_\_\_\_

NOTE BOOK: \_\_\_\_\_

NO. \_\_\_\_\_

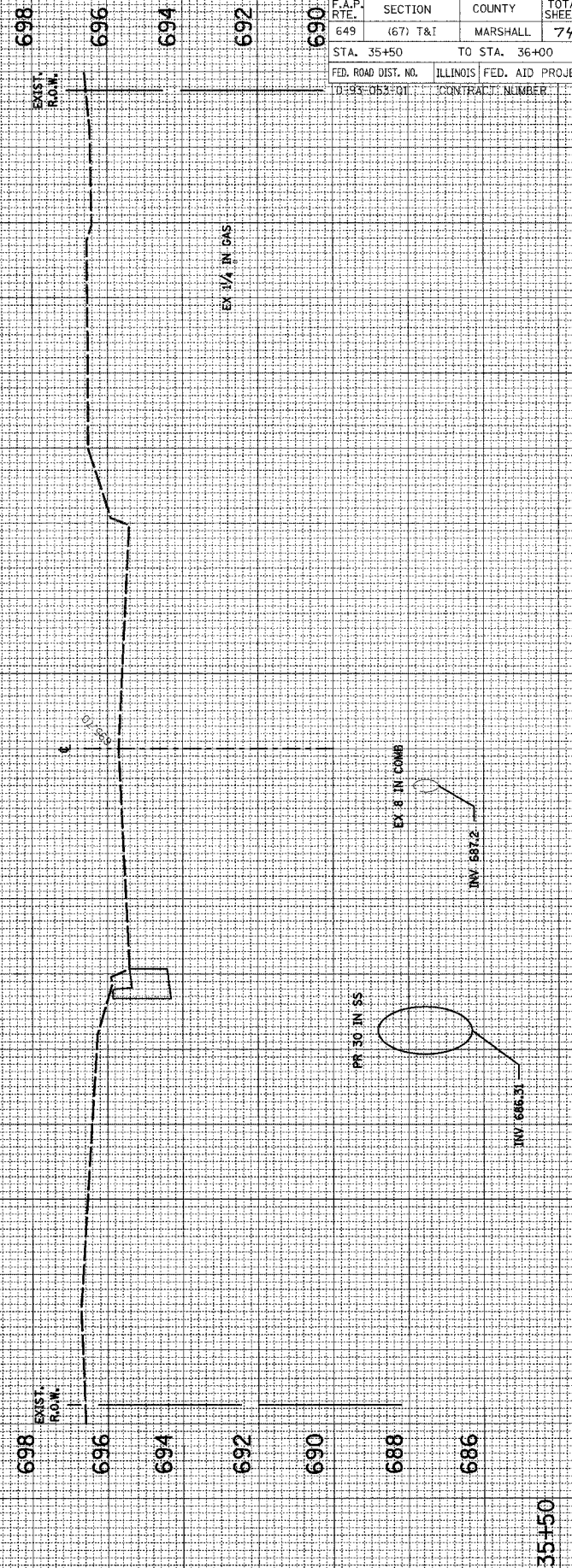
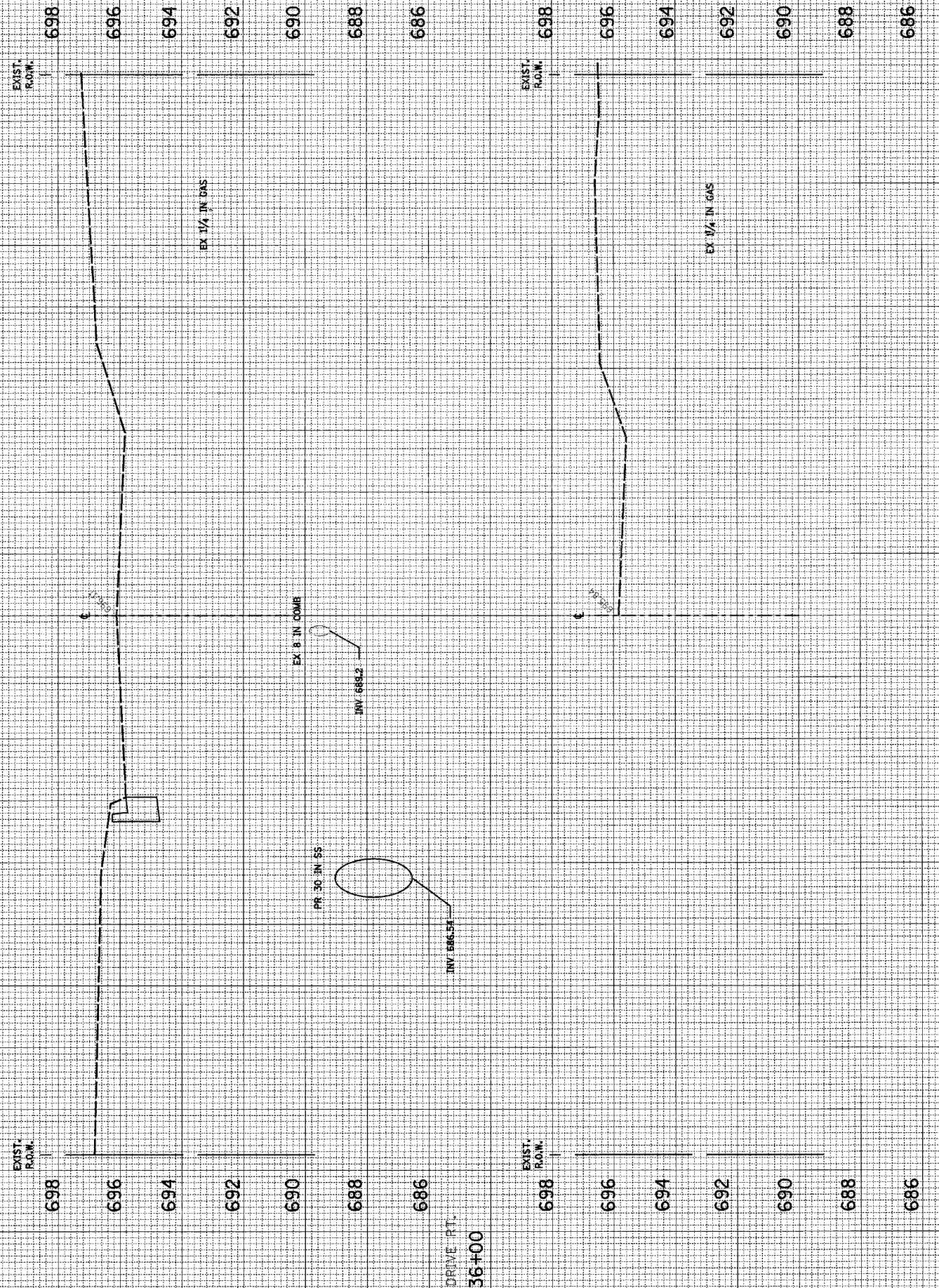
ORIGINAL SURVEY PLOTTED AREAS CHECKED

DATE: \_\_\_\_\_ BY: \_\_\_\_\_

NOTE BOOK: \_\_\_\_\_

NO. \_\_\_\_\_

32 28 24 20 16 12 8 4 0 4 8 12 16 20 24 28 32



SCALE: HORIZ. 1/4" = 1' VERT. 1/2" = 1'