

The Subsurface Utility Engineering Company
 8397 Euclid Avenue
 Manassas Park, VA 20111
 (703) 361-6006

So-Deep Test Hole Certification Form

© So-Deep, Inc. 1988, 1991

Control # SIL9418
 Test Hole # 4
 Plan Scale 1" = 20'
 Sheet # 9 OF 10
 Proposed STORM MH
 Date AUGUST 30, 2004

City, County, State WENONA, IL
 Gen. Loc. W SIDE OF RTE. 17, 150'± N OF 5TH SOUTH ST.
 Recorded Size/Material/Type UNK. SIZE, FUNC., & TYPE UTILITY LINE
 Foreman/Truck#/Form By M. NELSON / 221/ M. ARMSTRONG

Condition of paving prior to work ASPHALT DW IN POOR CONDITION

B.M. 1 Elev. = 691.24'
 is GIVEN Description: (CP 1006) SPIKE FOUND, 64" RT OF SURVEY CL. STA. 544+454, IL RTE 17

B.M. 2 Elev. = 692.12'
 is GIVEN Description: (CP 1009) MAG NAIL FOUND, 15'± RT OF SURVEY CL. STA. 550+022, IL RTE. 17

Benchmarks check BY 0.05'
 Elevations are referenced to B.M.#1

SO-DEEP will attempt to use the IMH# most applicable to your design. If however, DIMs differ by more than .05', resulting differences could cause design conflicts.

Recorded Size/Type of utility WAS FOUND

There WERE NOT additional utilities in the test hole.

The utility WAS NOT in good condition. SEE REMARKS

Paving Thickness and type 1" ASPHALT

Color of ribbon installed BLUE

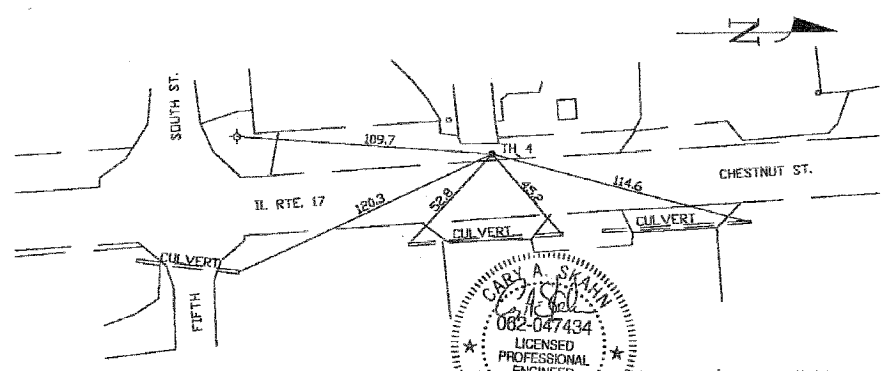
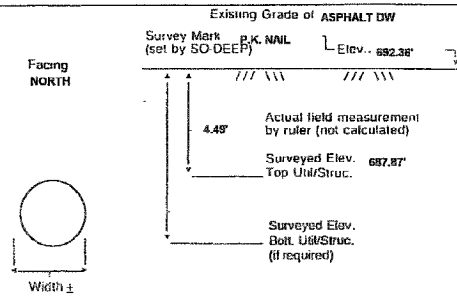
Soil Type MOIST BROWN

Field Condition GRAVEL SHOULDER

T.H. tied to P.K. NAIL

* 1 1/4" METALLIC UNKNOWN FUNCTION PIPE
 Size/Material/Type
 Portion of pipe exposed for O.D. measurement:
 FULL

Remarks: *UTILITY RECORDS RESEARCH, TOPSIDE SURVEY AND ELECTRONIC DESIGNATING FAILED TO REVEAL THE EXACT TYPE FUNCTION OF THIS 1 1/4" PIPE. CREW FOUND THE PIPE TO BE IN VERY POOR CONDITION.



- | | |
|---|--|
| <ul style="list-style-type: none"> RAW = Right of Way N.T.S. = Not to Scale * = Not Shown on Plan PCD = Precast Concrete COND. = Concrete CONC. = Concrete O.D. = Outside Diameter C.I. = Cast Iron D.I. = Ductile Iron RPC = Rough Pour Concrete CL = Centerline T.C. = Terra Cotta PLAS. = Plastic BL. = Base Line ELEC. = Electric TELE. = Telephone T.H. = Test Hole SW = Sidewalk DW = Driveway B.M. = Benchmark C.B. = Catch Basin GV = Gas Valve | <ul style="list-style-type: none"> 0.05' - 1" 1.0' - 2" 2.0' - 3" 3.0' - 4" 4.0' - 5" 5.0' - 6" 6.0' - 7" 7.0' - 8" 8.0' - 10" 10' - 11" ○ Sewer Manhole ● Test Hole ⊕ Fire Hydrant □ Pole ⊖ Electric Manhole ⊖ Telephone Manhole ⊖ T.S. = Traverser Station ⊖ Valve ⊖ Water Meter ⊖ Telephone Manhole ⊖ Telephone Pedestal |
|---|--|

Performing out-of-sight work...with vision!
 Note: To Eliminate mistakes and check this work, So-Deep suggests you scale and plot all dimensions onto the plans and review all elevations carefully. So-Deep is responsible only for information shown on our forms.



The Subsurface Utility Engineering Company
 8397 Euclid Avenue
 Manassas Park, VA 20111
 (703) 361-6006

So-Deep Test Hole Certification Form

© So-Deep, Inc. 1988, 1991

Control # SIL9418
 Test Hole # 5
 Plan Scale 1" = 20'
 Sheet # 9 OF 10
 Proposed STORM PIPE
 Date AUGUST 30, 2004

City, County, State WENONA, IL
 Gen. Loc. W SIDE OF RTE. 17, 85'± S OF 4TH SOUTH ST.
 Recorded Size/Material/Type UNK. SIZE, FUNC., & TYPE UTILITY LINE
 Foreman/Truck#/Form By M. NELSON / 221/ M. ARMSTRONG

Condition of paving prior to work NO PAVING

B.M. 1 Elev. = 693.58'
 is GIVEN Description: (CP 1004) MAG NAIL FOUND, 12'± RT OF SURVEY CL. STA. 554+752, IL RTE 17

B.M. 2 Elev. = 692.12'
 is GIVEN Description: (CP 1009) MAG NAIL FOUND, 15'± RT OF SURVEY CL. STA. 550+022, IL RTE. 17

Benchmarks check BY 0.05'
 Elevations are referenced to B.M.#2

SO-DEEP will attempt to use the IMH# most applicable to your design. If however, DIMs differ by more than .05', resulting differences could cause design conflicts.

Recorded Size/Type of utility WAS FOUND

There WERE NOT additional utilities in the test hole.

The utility WAS NOT in good condition. SEE REMARKS

Paving Thickness and type NO PAVING

Color of ribbon installed BLUE

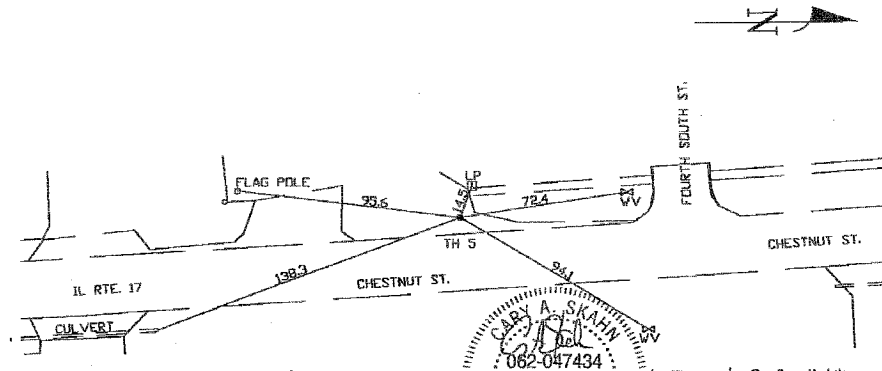
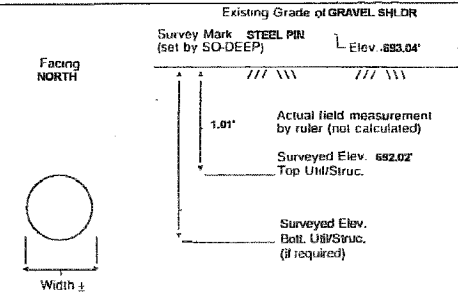
Soil Type MOIST BROWN

Field Condition GRAVEL SHOULDER

T.H. tied to STEEL PIN

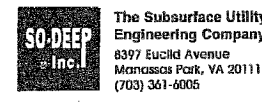
* 6 3/4" METALLIC UNKNOWN FUNCTION PIPE
 Size/Material/Type
 Portion of pipe exposed for O.D. measurement:
 FULL

Remarks: *THE MAYOR OF THE CITY OF WENONA COULD NOT VERIFY THE FUNCTION OF THIS PIPE. UTILITY RECORDS RESEARCH, TOPSIDE SURVEY AND ELECTRONIC DESIGNATING FAILED TO REVEAL THE EXACT TYPE FUNCTION OF THE 6 3/4" PIPE. CREW FOUND THE PIPE TO BE IN VERY POOR CONDITION AT THIS LOCATION.



- | | |
|---|--|
| <ul style="list-style-type: none"> RAW = Right of Way N.T.S. = Not to Scale * = Not Shown on Plan PCD = Precast Concrete COND. = Concrete CONC. = Concrete O.D. = Outside Diameter C.I. = Cast Iron D.I. = Ductile Iron RPC = Rough Pour Concrete CL = Centerline T.C. = Terra Cotta PLAS. = Plastic BL. = Base Line ELEC. = Electric TELE. = Telephone T.H. = Test Hole SW = Sidewalk DW = Driveway B.M. = Benchmark C.B. = Catch Basin GV = Gas Valve | <ul style="list-style-type: none"> 0.05' - 1" 1.0' - 2" 2.0' - 3" 3.0' - 4" 4.0' - 5" 5.0' - 6" 6.0' - 7" 7.0' - 8" 8.0' - 10" 10' - 11" ○ Sewer Manhole ● Test Hole ⊕ Fire Hydrant □ Pole ⊖ Electric Manhole ⊖ Telephone Manhole ⊖ T.S. = Traverser Station ⊖ Valve ⊖ Water Meter ⊖ Telephone Manhole ⊖ Telephone Pedestal |
|---|--|

Performing out-of-sight work...with vision!
 Note: To Eliminate mistakes and check this work, So-Deep suggests you scale and plot all dimensions onto the plans and review all elevations carefully. So-Deep is responsible only for information shown on our forms.



The Subsurface Utility Engineering Company
 8397 Euclid Avenue
 Manassas Park, VA 20111
 (703) 361-6006

So-Deep Test Hole Certification Form

© So-Deep, Inc. 1988, 1991

Control # SIL9418
 Test Hole # 6
 Plan Scale 1" = 20'
 Sheet # 8 OF 10
 Proposed STORM PIPE
 Date AUGUST 30, 2004

City, County, State WENONA, IL
 Gen. Loc. SW CORNER OF IL RTE. 17 & 4TH SOUTH ST.
 Recorded Size/Material/Type 8" PLASTIC WATER LINE
 Foreman/Truck#/Form By M. NELSON / 221/ M. ARMSTRONG

Condition of paving prior to work NO PAVING

B.M. 1 Elev. = 693.58'
 is GIVEN Description: (CP 1004) MAG NAIL FOUND, 12'± RT OF SURVEY CL. STA. 554+752, IL RTE 17

B.M. 2 Elev. = 692.12'
 is GIVEN Description: (CP 1009) MAG NAIL FOUND, 15'± RT OF SURVEY CL. STA. 550+022, IL RTE. 17

Benchmarks check BY 0.05'
 Elevations are referenced to B.M.#2

SO-DEEP will attempt to use the IMH# most applicable to your design. If however, DIMs differ by more than .05', resulting differences could cause design conflicts.

Recorded Size/Type of utility WAS FOUND

There WERE NOT additional utilities in the test hole.

The utility WAS in good condition.

Paving Thickness and type NO PAVING

Color of ribbon installed BLUE

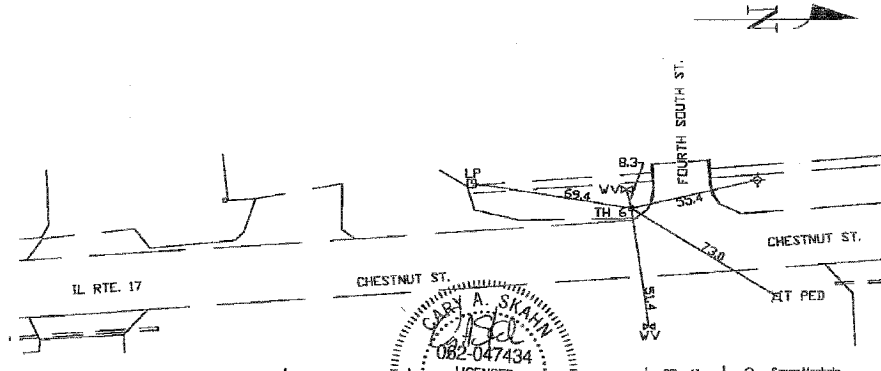
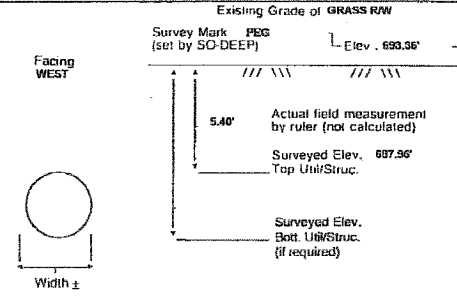
Soil Type MOIST BROWN

Field Condition GRASS RW

T.H. tied to PEG

* 12 1/2" STEEL CASING PIPE
 Size/Material/Type
 Portion of pipe exposed for O.D. measurement:
 FULL

Remarks: * WENONA WATER RECORDS INDICATE THIS PIPE SERVES AS A CASING FOR A 8" PLASTIC WATER LINE AT THIS LOCATION.



- | | |
|---|--|
| <ul style="list-style-type: none"> RAW = Right of Way N.T.S. = Not to Scale * = Not Shown on Plan PCD = Precast Concrete COND. = Concrete CONC. = Concrete O.D. = Outside Diameter C.I. = Cast Iron D.I. = Ductile Iron RPC = Rough Pour Concrete CL = Centerline T.C. = Terra Cotta PLAS. = Plastic BL. = Base Line ELEC. = Electric TELE. = Telephone T.H. = Test Hole SW = Sidewalk DW = Driveway B.M. = Benchmark C.B. = Catch Basin GV = Gas Valve | <ul style="list-style-type: none"> 0.05' - 1" 1.0' - 2" 2.0' - 3" 3.0' - 4" 4.0' - 5" 5.0' - 6" 6.0' - 7" 7.0' - 8" 8.0' - 10" 10' - 11" ○ Sewer Manhole ● Test Hole ⊕ Fire Hydrant □ Pole ⊖ Electric Manhole ⊖ Telephone Manhole ⊖ T.S. = Traverser Station ⊖ Valve ⊖ Water Meter ⊖ Telephone Manhole ⊖ Telephone Pedestal |
|---|--|

Performing out-of-sight work...with vision!
 Note: To Eliminate mistakes and check this work, So-Deep suggests you scale and plot all dimensions onto the plans and review all elevations carefully. So-Deep is responsible only for information shown on our forms.

REVISIONS	
NAME	DATE

ILLINOIS DEPARTMENT OF TRANSPORTATION
 ILLINOIS ROUTE 17 AND
 2ND NORTH STREET
 TEST HOLE CERTIFICATION FORMS
 SCALE: NTS
 DATE MARCH, 2005
 DRAWN BY DR
 CHECKED BY JMH

COLLINS ENGINEERS
 123 N. WACKER DR. SUITE 300
 CHICAGO, IL 60606
 (312) 704-9300
 ILLINOIS PROFESSIONAL DESIGN FIRM
 LICENSE NO. 184-000993