

F.A.P. RTE.	SECTION	COUNTY	TOTAL SHEETS	SHEET NO.
649	670	RS P&E MARSHALL	74	70
STA.		TO STA.		
FED. ROAD DIST. NO.		ILLINOIS FED. AID PROJECT		

SO-DEEP Inc.
The Subsurface Utility Engineering Company
8397 Euclid Avenue
Manassas Park, VA 20111
(703) 361-6005

So-Deep Test Hole Certification Form

© So-Deep, Inc. 1988, 1991

Control # SIL9418
Test Hole # 7
Plan Scale 1" = 20'
Sheet # 8 OF 10
Proposed CATCH BASIN
Date AUGUST 30, 2004

City, County, State WENONA, IL
Gen. Loc. W SIDE OF RTE. 17, 145'± R OF 4TH SOUTH ST.
Recorded Size/Material/Type 8" PLASTIC WATER LINE
Foreman/Truck#/Form By M. NELSON / 221/ M. ARMSTRONG

Condition of paving prior to work
NO PAVING

B.M. 1 Elev. = 697.52'
is GIVEN
Description: (CP 1002) MAG NAIL FOUND, 20'± RT OF SURVEY
CL STA. 564+18.5, IL RTE 17

B.M. 2 Elev. = 696.83'
is GIVEN
Description: (CP 1003) MAG NAIL FOUND, 15'± RT OF SURVEY
CL STA. 559+36.5, IL RTE. 17

Benchmarks check BY 0.03'
Elevations are referenced to B.M.#1

Recorded Size/Type of utility WAS FOUND

There WERE NOT additional utilities in the test hole.

The utility WAS in good condition.

Paving Thickness and type NO PAVING

Color of ribbon installed BLUE

Soil Type MOIST BROWN

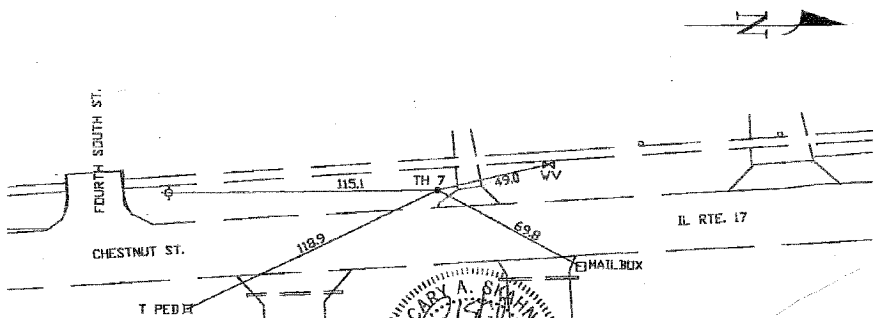
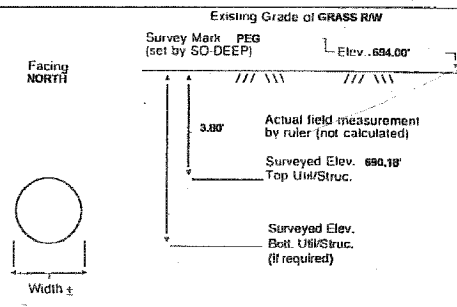
Field Condition GRASS RW

T.H. tied to PEG

8 1/2" PLASTIC WATER LINE
Size/Material/Type
Portion of pipe exposed
for O.D. measurement:
FULL

Remarks: NONE

SO-DEEP will attempt to use the BM#1 most applicable to your design. If however, BMs differ by more than .05', resulting differences could cause design conflicts.



- | | | |
|---------------------------|--------------------|----------------------------|
| R/W = Rights of Way | T.C. = Terra Cotta | ○ = Sewer Manhole |
| N.T.S. = Not to Scale | PLAS. = Plastic | ● = Test Hole |
| ≠ = Not Shown on Plan | BL. = Base Line | ⊕ = Fire Hydrant |
| PCD = Precast Concrete | ELEC. = Electric | □ = Pole |
| CONC. = Concrete | TELE. = Telephone | — = Fence Line |
| O.D. = Outside Diameter | T.H. = Test Hole | ⊙ = Electric Manhole |
| C.I. = Cast Iron | SW = Sidewalk | — T.S. = Traversal Station |
| D.I. = Ductile Iron | DW = Driveway | ⊕ = Water Meter |
| RPC = Rough Pour Concrete | BM = Benchmark | ⊕ = Telephone Manhole |
| CL = Centerline | C.B. = Catch Basin | □ = Telephone Pedestal |
| | GV = Gas Valve | |

Performing out-of-sight work...with vision!SM
Note: To eliminate mistakes and check this work, So-Deep suggests you scale and plot all dimensions onto the plans and review all elevations carefully. So-Deep is responsible only for information shown on our forms.

SO-DEEP Inc.
The Subsurface Utility Engineering Company
8397 Euclid Avenue
Manassas Park, VA 20111
(703) 361-6005

So-Deep Test Hole Certification Form

© So-Deep, Inc. 1988, 1991

Control # SIL9418
Test Hole # 8
Plan Scale 1" = 20'
Sheet # 8 OF 10
Proposed CATCH BASIN
Date AUGUST 30, 2004

City, County, State WENONA, IL
Gen. Loc. SW CORNER OF IL RTE. 17 & 3RD SOUTH ST.
Recorded Size/Material/Type 8" PLASTIC WATER LINE
Foreman/Truck#/Form By M. NELSON / 221/ M. ARMSTRONG

Condition of paving prior to work
NO PAVING

B.M. 1 Elev. = 697.52'
is GIVEN
Description: (CP 1002) MAG NAIL FOUND, 20'± RT OF SURVEY
CL STA. 564+18.5, IL RTE 17

B.M. 2 Elev. = 696.83'
is GIVEN
Description: (CP 1003) MAG NAIL FOUND, 15'± RT OF SURVEY
CL STA. 559+36.5, IL RTE. 17

Benchmarks check BY 0.03'
Elevations are referenced to B.M.#1

Recorded Size/Type of utility WAS FOUND

There WERE NOT additional utilities in the test hole.

The utility WAS in good condition.

Paving Thickness and type NO PAVING

Color of ribbon installed BLUE

Soil Type MOIST BROWN

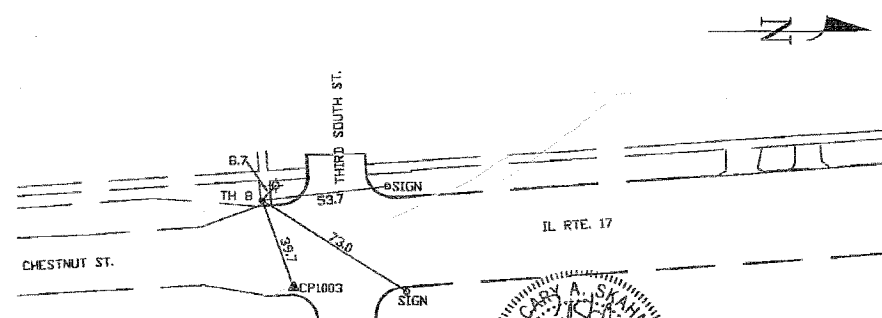
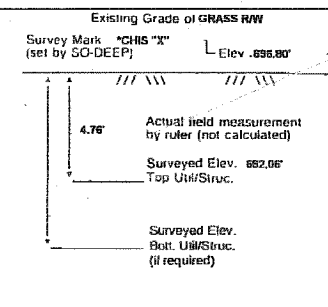
Field Condition GRASS RW

T.H. tied to CHS "X"

8 1/2" PLASTIC WATER LINE
Size/Material/Type
Portion of pipe exposed
for O.D. measurement:
FULL

Remarks: TEST HOLE DUG IN GRASS RW, CHS "X" SET IN CONC. SIDEWALK

SO-DEEP will attempt to use the BM#1 most applicable to your design. If however, BMs differ by more than .05', resulting differences could cause design conflicts.



- | | | |
|---------------------------|--------------------|----------------------------|
| R/W = Rights of Way | T.C. = Terra Cotta | ○ = Sewer Manhole |
| N.T.S. = Not to Scale | PLAS. = Plastic | ● = Test Hole |
| ≠ = Not Shown on Plan | BL. = Base Line | ⊕ = Fire Hydrant |
| PCD = Precast Concrete | ELEC. = Electric | □ = Pole |
| CONC. = Concrete | TELE. = Telephone | — = Fence Line |
| O.D. = Outside Diameter | T.H. = Test Hole | ⊙ = Electric Manhole |
| C.I. = Cast Iron | SW = Sidewalk | — T.S. = Traversal Station |
| D.I. = Ductile Iron | DW = Driveway | ⊕ = Water Meter |
| RPC = Rough Pour Concrete | BM = Benchmark | ⊕ = Telephone Manhole |
| CL = Centerline | C.B. = Catch Basin | □ = Telephone Pedestal |
| | GV = Gas Valve | |

Performing out-of-sight work...with vision!SM
Note: To eliminate mistakes and check this work, So-Deep suggests you scale and plot all dimensions onto the plans and review all elevations carefully. So-Deep is responsible only for information shown on our forms.

SO-DEEP Inc.
The Subsurface Utility Engineering Company
8397 Euclid Avenue
Manassas Park, VA 20111
(703) 361-6005

So-Deep Test Hole Certification Form

© So-Deep, Inc. 1988, 1991

Control # SIL9418
Test Hole # 9
Plan Scale 1" = 20'
Sheet # 8 OF 10
Proposed CATCH BASIN
Date AUGUST 30, 2004

City, County, State WENONA, IL
Gen. Loc. W SIDE OF RTE. 17, 200'± S OF 2ND SOUTH ST.
Recorded Size/Material/Type 8" PLASTIC WATER LINE
Foreman/Truck#/Form By M. NELSON / 221/ M. ARMSTRONG

Condition of paving prior to work
NO PAVING

B.M. 1 Elev. = 697.52'
is GIVEN
Description: (CP 1002) MAG NAIL FOUND, 20'± RT OF SURVEY
CL STA. 564+18.5, IL RTE 17

B.M. 2 Elev. = 696.83'
is GIVEN
Description: (CP 1003) MAG NAIL FOUND, 15'± RT OF SURVEY
CL STA. 559+36.5, IL RTE. 17

Benchmarks check BY 0.03'
Elevations are referenced to B.M.#1

Recorded Size/Type of utility WAS FOUND

There WERE NOT additional utilities in the test hole.

The utility WAS in good condition.

Paving Thickness and type NO PAVING

Color of ribbon installed BLUE

Soil Type MOIST BROWN

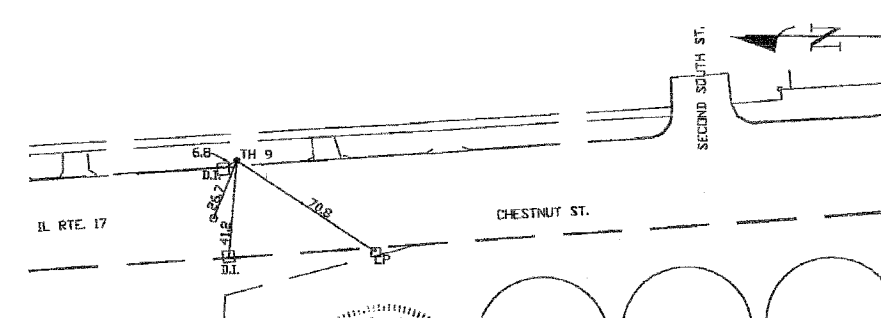
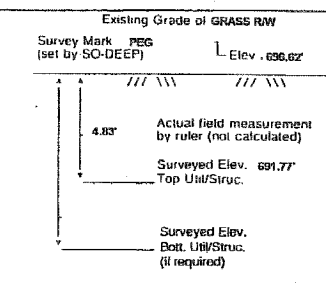
Field Condition GRASS RW

T.H. tied to PEG

8 1/2" PLASTIC WATER LINE
Size/Material/Type
Portion of pipe exposed
for O.D. measurement:
FULL

Remarks: NONE

SO-DEEP will attempt to use the BM#1 most applicable to your design. If however, BMs differ by more than .05', resulting differences could cause design conflicts.



- | | | |
|---------------------------|--------------------|----------------------------|
| R/W = Rights of Way | T.C. = Terra Cotta | ○ = Sewer Manhole |
| N.T.S. = Not to Scale | PLAS. = Plastic | ● = Test Hole |
| ≠ = Not Shown on Plan | BL. = Base Line | ⊕ = Fire Hydrant |
| PCD = Precast Concrete | ELEC. = Electric | □ = Pole |
| CONC. = Concrete | TELE. = Telephone | — = Fence Line |
| O.D. = Outside Diameter | T.H. = Test Hole | ⊙ = Electric Manhole |
| C.I. = Cast Iron | SW = Sidewalk | — T.S. = Traversal Station |
| D.I. = Ductile Iron | DW = Driveway | ⊕ = Water Meter |
| RPC = Rough Pour Concrete | BM = Benchmark | ⊕ = Telephone Manhole |
| CL = Centerline | C.B. = Catch Basin | □ = Telephone Pedestal |
| | GV = Gas Valve | |

Performing out-of-sight work...with vision!SM
Note: To eliminate mistakes and check this work, So-Deep suggests you scale and plot all dimensions onto the plans and review all elevations carefully. So-Deep is responsible only for information shown on our forms.

FILE: 91384616-16-04-38460007.dgn
DATE: 22-Feb-05 14:01

REVISIONS	
NAME	DATE

COLLINS ENGINEERS
123 N. WACKER DR., SUITE 300
CHICAGO, IL 60606
(312) 704-8300
ILLINOIS PROFESSIONAL DESIGN FIRM
LICENSE NO. 194-000993

ILLINOIS DEPARTMENT OF TRANSPORTATION
ILLINOIS ROUTE 17 AND
2ND NORTH STREET
TEST HOLE CERTIFICATION FORMS
SCALE: NTS
DATE: MARCH, 2005
DRAWN BY: DR
CHECKED BY: JMH