

F.A.P. RTE.	SECTION	COUNTY	TOTAL SHEETS	SHEET NO.
649	67(R)RS 21	MARSHALL	74	73
STA.		TO STA.		
FED. ROAD DIST. NO.	ILLINOIS	FED. AID PROJECT		

10473



**The Subsurface Utility Engineering Company**  
 8397 Euclid Avenue  
 Manassas Park, VA 20111  
 (703) 361-6005

**So-Deep Test Hole Certification Form**

© So-Deep, Inc. 1988, 1991

Control # SIL9418  
 Test Hole # 16  
 Plan Scale 1" = 20'  
 Sheet # 4 OF 10  
 Proposed STORM PIPE  
 Date AUGUST 28, 2004

Condition of paving prior to work  
**NO PAVING**

City, County, State **WENONA, IL**  
 Gen. Loc. **SW CORNER OF IL RTE. 17 & 2ND NORTH ST.**  
 Recorded Size/Material/Type **8" PLASTIC WATER LINE**  
 Foreman/Truck#/Form By **M. NELSON / 221/M. ARMSTRONG**

B.M. 1 Elev. = **696.50'**  
 is GIVEN Description: (CP 1040) MAG NAIL FOUND, 17± RT OF SURVEY  
 CL STA. 578+092, IL RTE 17

So-Deep will attempt to use the BM#1 most applicable to your design. If however, BMs differ by more than .05', existing differences could cause design conflicts.

B.M. 2 Elev. = **698.15'**  
 is GIVEN Description: (CP 1042) MAG NAIL FOUND, 15± RT OF SURVEY  
 CL STA. 584+922, IL RTE. 17

Benchmarks check BY **0.02'**  
 Elevations are referenced to **B.M.#2**

Recorded Size/Type of utility **WAS FOUND** Existing Grade of **ASPHALT RDWY**

There **WERE NOT** additional utilities in the test hole.  
 The utility **WAS** in good condition.

Paving Thickness and type **2 1/2" ASPH. OVER 6" CONC.**

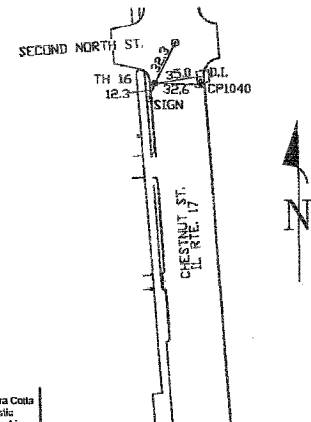
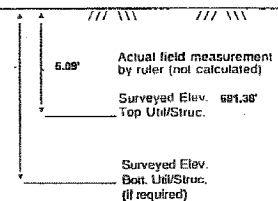
Color of ribbon installed **BLUE**  
 Soil Type **MOIST BROWN**  
 Field Condition **ASPHALT ROADWAY**

T.H. tied to **P.K. NAIL**  
 Size/Material/Type **8 1/2" PLASTIC WATER LINE**  
 Portion of pipe exposed for O.D. measurement: **FULL**

Remarks: **NONE**



Survey Mark **P.K. NAIL**  
 (set by SO-DEEP) Elev. **696.47'**



Professional Engineer Seal: **CARY A. SKAHN**, License No. **062-047434**, State of Illinois, dated **9-13-04**.

RW = Right of Way	T.C. = Terra Cotta	.08" = 1"	○ Sewer Manhole
N.T.S. = Not to Scale	PLAS. = Plastic	.16" = 2"	⊕ Test Hole
* = Not Shown on Plan	BL. = Base Line	.25" = 3"	⊙ Fire Hydrant
PCD = Precast Concrete	ELEC. = Electric	.32" = 4"	□ Pole
CONC. = Concrete	TELE. = Telephone	.42" = 5"	⊕ Electric Manhole
O.D. = Outside Diameter	T.H. = Test Hole	.50" = 6"	⊕ Fanco Line
C.I. = Cast Iron	SW = Sidewalk	.58" = 7"	⊕ T.S. = Traversal Station
D.I. = Ductile Iron	DW = Driveway	.67" = 8"	⊕ Valve
RPC = Rough Pour Concrete	BM = Benchmark	.75" = 9"	⊕ Water Meter
CL = Centeline	C.B. = Catch Basin	.83" = 10"	⊕ Telephone Manhole
	GV = Gas Valve	.92" = 11"	⊕ Telephone Pedestal

*Performing out-of-sight work...with vision!™*  
 Note: To eliminate mistakes and check this work, So-Deep suggests you scale and plot all dimensions onto the plans and review all elevations carefully. So-Deep is responsible only for information shown on our forms.



**The Subsurface Utility Engineering Company**  
 8397 Euclid Avenue  
 Manassas Park, VA 20111  
 (703) 361-6005

**So-Deep Test Hole Certification Form**

© So-Deep, Inc. 1988, 1991

Control # SIL9418  
 Test Hole # 17  
 Plan Scale 1" = 20'  
 Sheet # 4 OF 10  
 Proposed CATCH BASIN  
 Date AUGUST 28, 2004

Condition of paving prior to work  
**NO PAVING**

City, County, State **WENONA, IL**  
 Gen. Loc. **W SIDE OF RTE. 17, 228± S OF 3RD NORTH ST.**  
 Recorded Size/Material/Type **8" PLASTIC WATER LINE**  
 Foreman/Truck#/Form By **M. NELSON / 221/M. ARMSTRONG**

B.M. 1 Elev. = **696.50'**  
 is GIVEN Description: (CP 1040) MAG NAIL FOUND, 17± RT OF SURVEY  
 CL STA. 578+092, IL RTE 17

So-Deep will attempt to use the BM#1 most applicable to your design. If however, BMs differ by more than .05', existing differences could cause design conflicts.

B.M. 2 Elev. = **698.15'**  
 is GIVEN Description: (CP 1042) MAG NAIL FOUND, 15± RT OF SURVEY  
 CL STA. 584+922, IL RTE. 17

Benchmarks check BY **0.02'**  
 Elevations are referenced to **B.M.#2**

Recorded Size/Type of utility **WAS FOUND** Existing Grade of **GRASS RAW**

There **WERE NOT** additional utilities in the test hole.  
 The utility **WAS** in good condition.

Paving Thickness and type **NO PAVING**

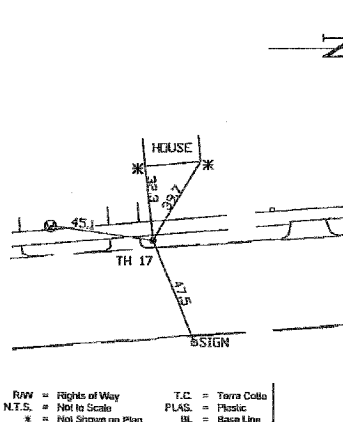
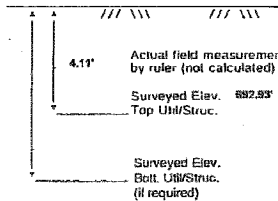
Color of ribbon installed **BLUE**  
 Soil Type **MOIST BROWN**  
 Field Condition **GRASS RAW**

T.H. tied to **PEG**  
 Size/Material/Type **8 1/2" PLASTIC WATER LINE**  
 Portion of pipe exposed for O.D. measurement: **FULL**

Remarks: **NONE**



Survey Mark **PEG**  
 (set by SO-DEEP) Elev. **697.05'**



Professional Engineer Seal: **CARY A. SKAHN**, License No. **062-047434**, State of Illinois, dated **9-13-04**.

RW = Right of Way	T.C. = Terra Cotta	.08" = 1"	○ Sewer Manhole
N.T.S. = Not to Scale	PLAS. = Plastic	.16" = 2"	⊕ Test Hole
* = Not Shown on Plan	BL. = Base Line	.25" = 3"	⊙ Fire Hydrant
PCD = Precast Concrete	ELEC. = Electric	.32" = 4"	□ Pole
CONC. = Concrete	TELE. = Telephone	.42" = 5"	⊕ Electric Manhole
O.D. = Outside Diameter	T.H. = Test Hole	.50" = 6"	⊕ Fanco Line
C.I. = Cast Iron	SW = Sidewalk	.58" = 7"	⊕ T.S. = Traversal Station
D.I. = Ductile Iron	DW = Driveway	.67" = 8"	⊕ Valve
RPC = Rough Pour Concrete	BM = Benchmark	.75" = 9"	⊕ Water Meter
CL = Centeline	C.B. = Catch Basin	.83" = 10"	⊕ Telephone Manhole
	GV = Gas Valve	.92" = 11"	⊕ Telephone Pedestal

*Performing out-of-sight work...with vision!™*  
 Note: To eliminate mistakes and check this work, So-Deep suggests you scale and plot all dimensions onto the plans and review all elevations carefully. So-Deep is responsible only for information shown on our forms.



**The Subsurface Utility Engineering Company**  
 8397 Euclid Avenue  
 Manassas Park, VA 20111  
 (703) 361-6005

**So-Deep Test Hole Certification Form**

© So-Deep, Inc. 1988, 1991

Control # SIL9418  
 Test Hole # 18  
 Plan Scale 1" = 20'  
 Sheet # 5 OF 10  
 Proposed CATCH BASIN  
 Date AUGUST 28, 2004

Condition of paving prior to work  
**NO PAVING**

City, County, State **WENONA, IL**  
 Gen. Loc. **SW CORNER OF IL RTE. 17 & THIRD NORTH ST.**  
 Recorded Size/Material/Type **8" PLASTIC WATER LINE**  
 Foreman/Truck#/Form By **M. NELSON / 221/M. ARMSTRONG**

B.M. 1 Elev. = **696.50'**  
 is GIVEN Description: (CP 1040) MAG NAIL FOUND, 17± RT OF SURVEY  
 CL STA. 578+092, IL RTE 17

So-Deep will attempt to use the BM#1 most applicable to your design. If however, BMs differ by more than .05', existing differences could cause design conflicts.

B.M. 2 Elev. = **698.15'**  
 is GIVEN Description: (CP 1042) MAG NAIL FOUND, 15± RT OF SURVEY  
 CL STA. 584+922, IL RTE. 17

Benchmarks check BY **0.02'**  
 Elevations are referenced to **B.M.#2**

Recorded Size/Type of utility **WAS FOUND** Existing Grade of **GRASS RAW**

There **WERE NOT** additional utilities in the test hole.  
 The utility **WAS** in good condition.

Paving Thickness and type **NO PAVING**

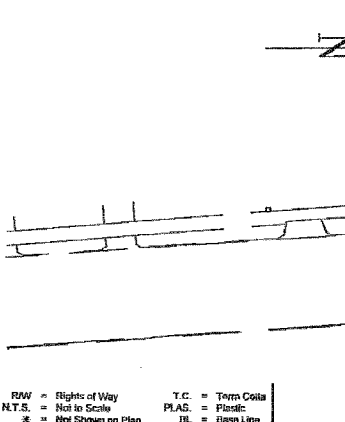
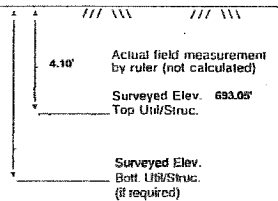
Color of ribbon installed **BLUE**  
 Soil Type **MOIST BROWN**  
 Field Condition **GRASS RAW**

T.H. tied to **PEG**  
 Size/Material/Type **8 1/2" PLASTIC WATER LINE**  
 Portion of pipe exposed for O.D. measurement: **FULL**

Remarks: **NONE**



Survey Mark **PEG**  
 (set by SO-DEEP) Elev. **697.15'**



Professional Engineer Seal: **CARY A. SKAHN**, License No. **062-047434**, State of Illinois, dated **9-13-04**.

RW = Right of Way	T.C. = Terra Cotta	.08" = 1"	○ Sewer Manhole
N.T.S. = Not to Scale	PLAS. = Plastic	.16" = 2"	⊕ Test Hole
* = Not Shown on Plan	BL. = Base Line	.25" = 3"	⊙ Fire Hydrant
PCD = Precast Concrete	ELEC. = Electric	.32" = 4"	□ Pole
CONC. = Concrete	TELE. = Telephone	.42" = 5"	⊕ Electric Manhole
O.D. = Outside Diameter	T.H. = Test Hole	.50" = 6"	⊕ Fanco Line
C.I. = Cast Iron	SW = Sidewalk	.58" = 7"	⊕ T.S. = Traversal Station
D.I. = Ductile Iron	DW = Driveway	.67" = 8"	⊕ Valve
RPC = Rough Pour Concrete	BM = Benchmark	.75" = 9"	⊕ Water Meter
CL = Centeline	C.B. = Catch Basin	.83" = 10"	⊕ Telephone Manhole
	GV = Gas Valve	.92" = 11"	⊕ Telephone Pedestal

*Performing out-of-sight work...with vision!™*  
 Note: To eliminate mistakes and check this work, So-Deep suggests you scale and plot all dimensions onto the plans and review all elevations carefully. So-Deep is responsible only for information shown on our forms.

FILE: g:\3848\6-16-04\38460007.dgn  
 DATE: 22-Feb-05 14:04

**COLLINS ENGINEERS**  
 123 N. WACKER DR., SUITE 300  
 CHICAGO, IL 60606  
 (312) 704-9300  
 ILLINOIS PROFESSIONAL DESIGN FIRM  
 LICENSE NO. 184-000983

REVISIONS	NAME	DATE

ILLINOIS DEPARTMENT OF TRANSPORTATION	
<b>ILLINOIS ROUTE 17 AND 2ND NORTH STREET TEST HOLE CERTIFICATION FORMS</b>	
SCALE: NTS	DRAWN BY DR
DATE MARCH, 2005	CHECKED BY JMH