

F.A.I. RTE.	SECTION	COUNTY	TOTAL SHEETS	SHEET NO.
80	(50-4HBR)I	LaSALLE	4	1

**STATE OF ILLINOIS
DEPARTMENT OF TRANSPORTATION
DIVISION OF HIGHWAYS**

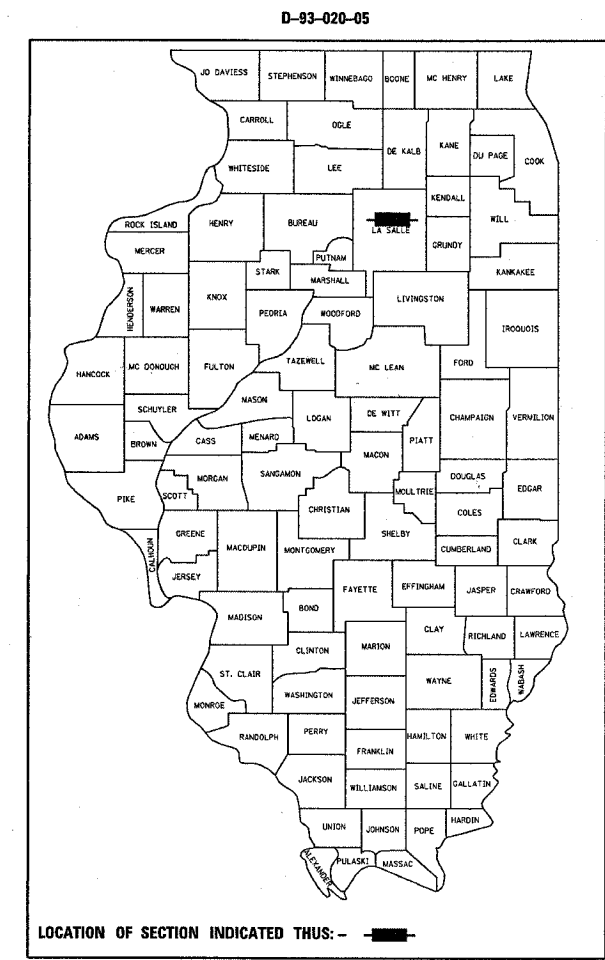
**PROPOSED
HIGHWAY PLANS**

**FAI ROUTE 80 (INTERSTATE 80)
SECTION (50-4HBR)I**

LaSALLE COUNTY

C-93-018-05

**IMPROVING CRASH WALL AT THE MEDIAN PIER
FOR SN. 050-0216 AT I 80 AND IL 23**



INDEX OF SHEETS

1. COVER SHEET
2. GENERAL NOTES, SUMMARY OF QUANTITIES
3. CRASH WALL BARRIER DETAILS AND SCHEDULE
4. AS BUILT PLANS S.N. 050-0216

HIGHWAY STANDARDS

- | | |
|-----------|---|
| 001001 | AREAS OF REINFORCEMENT BARS |
| 701101-01 | OFF-ROAD OPERATIONS MULTILANE, 4.5 m (15') TO 600 mm (24") FROM PAVEMENT EDGE |
| 702001-05 | TRAFFIC CONTROL DEVICES |

FULL SIZE PLANS HAVE BEEN PREPARED USING STANDARD ENGINEERING SCALES. REDUCED SIZED PLANS WILL NOT CONFORM TO STANDARD SCALES. IN MAKING MEASUREMENTS ON REDUCED PLANS, THE ABOVE SCALES MAY BE USED.

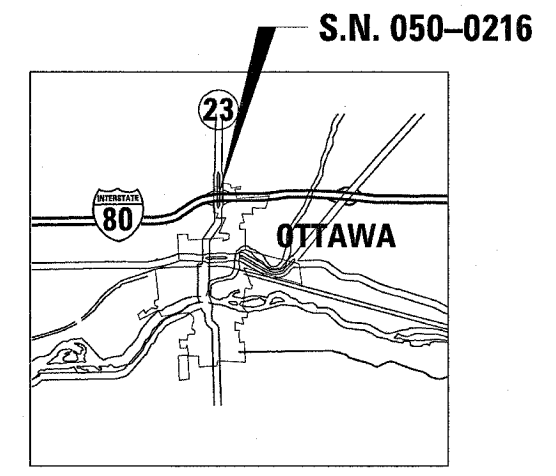
J.U.L.I.E.
JOINT UTILITY LOCATION INFORMATION FOR EXCAVATION
1-800-892-0123

MICROFILMED _____
REEL NUMBER _____
AWARDED _____
RESIDENT ENGINEER _____
AS BUILT CHANGES WERE MADE ON THE FOLLOWING SHEETS _____

DISTRICT 3 NO. (815) 434-6131

**PROJECT ENGINEER: DAVE BROVIAK
UNIT CHIEF: MARK JONES
TOWNSHIP: DAYTON**

CONTRACT NO. 66541



**LOCATION MAP
NOT TO SCALE**



FUNCTIONAL CLASSIFICATION - INTERSTATE
ADT = 28,300
P.V. = 61.3% S.U. = 6.1% M.U. = 32.6%

STATE OF ILLINOIS
DEPARTMENT OF TRANSPORTATION
DIVISION OF HIGHWAYS

SUBMITTED 3/24 2005

Gregory L. Mowatt
DEPUTY DIRECTOR OF HIGHWAYS, REGION ENGINEER

May 13, 2005
Mike Hene
ENGINEER OF DESIGN AND ENVIRONMENT

May 13, 2005
Victor Moders
DIRECTOR, DIVISION OF HIGHWAYS

**PRINTED BY THE AUTHORITY
OF THE STATE OF ILLINOIS**

F.A. RTE.	SECTION	COUNTY	TOTAL SHEETS	SHEET NO.
80	(50-4HBR)I	LoSALLE	4	2
STA.		TO STA.		
FED. ROAD DIST. NO. 4 ILLINOIS FED. AID PROJECT				

SUMMARY OF QUANTITIES URBAN

CODE NUMBER	ITEM	UNIT	TOTAL QUANTITY (SFTY-2A)
50300225	CONCRETE STRUCTURES	CU YD	6.8
50300501	RUBBED FINISH (MODIFIED)	SQ FT	152
50800205	REINFORCEMENT BARS, EPOXY COATED	LBS	670
67100100	MOBILIZATION	L SUM	1

GENERAL NOTES

ANY REFERENCE TO A STANDARD IN THESE PLANS SHALL BE INTERPRETED TO MEAN THE EDITION AS INDICATED BY THE SUBNUMBER LISTED ON THE INDEX OF SHEETS OR THE COPY OF THE STANDARD INCLUDED IN THESE PLANS.

THE TOPS OF ALL CRASH WALLS SHOULD SLOPE TO DRAIN.

STATE OF ILLINOIS
DEPARTMENT OF TRANSPORTATION
DISTRICT THREE

PREPARED BY: Thomas Sanchez, P.E.
DISTRICT STUDIES & PLANS ENGINEER

DATE: December 14, 2004

EXAMINED BY: Albert K. ...
DISTRICT CONSTRUCTION ENGINEER

Kenneth R. ...
DISTRICT MATERIALS ENGINEER

James A. ...
DISTRICT OPERATIONS ENGINEER

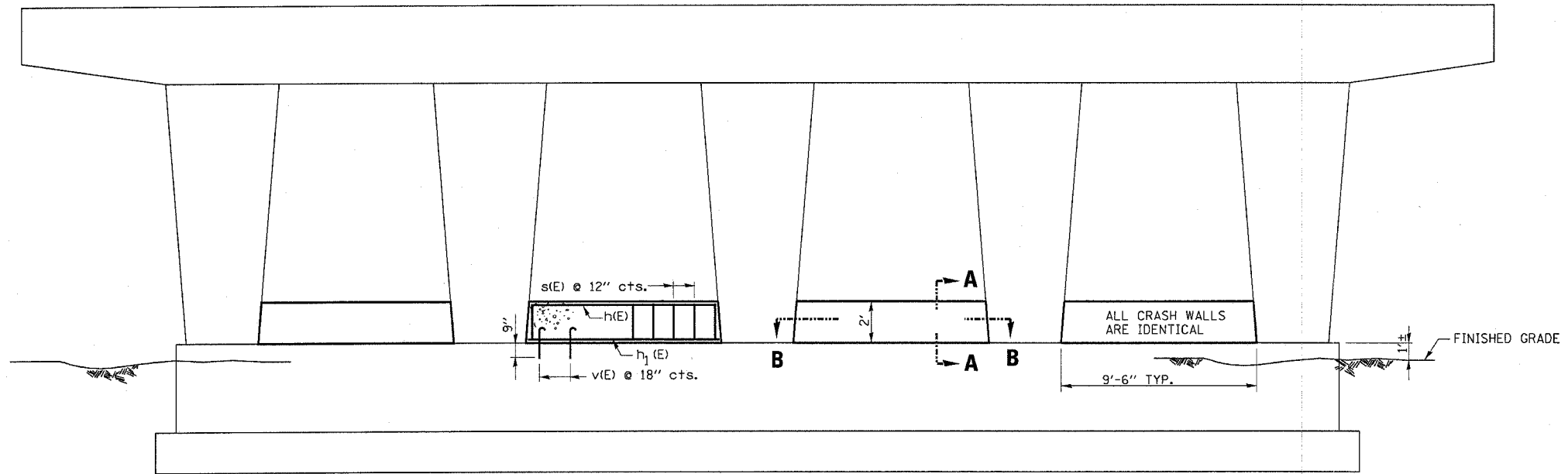
REVISIONS	
NAME	DATE

ILLINOIS DEPARTMENT OF TRANSPORTATION
GENERAL NOTES
SUMMARY OF QUANTITIES

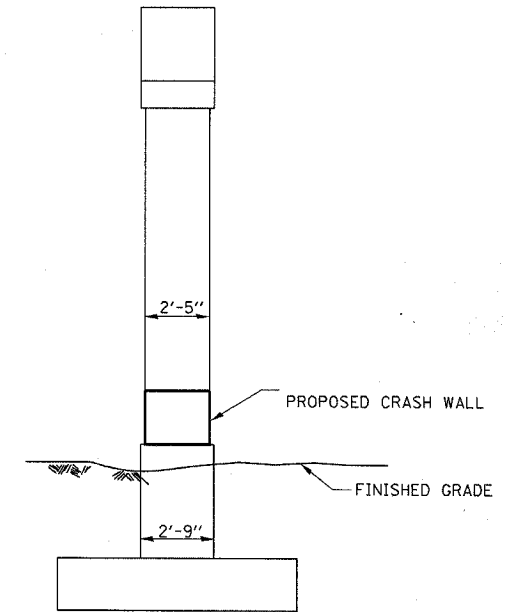
DRAWN BY MWW

CHECKED BY

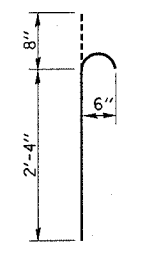
F.A.I. RTE.	SECTION	COUNTY	TOTAL SHEETS	SHEET NO.
80	(50-4HBR)	LaSALLE	4	3
STA. TO STA.		FED. ROAD DIST. NO. 4 ILLINOIS FED. AID PROJECT		



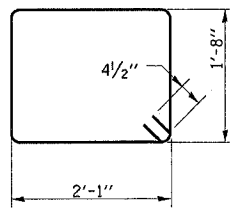
ELEVATION VIEW



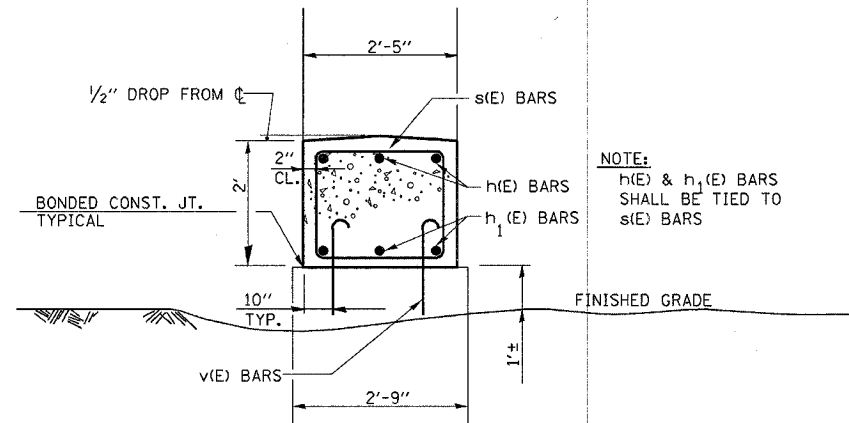
END VIEW



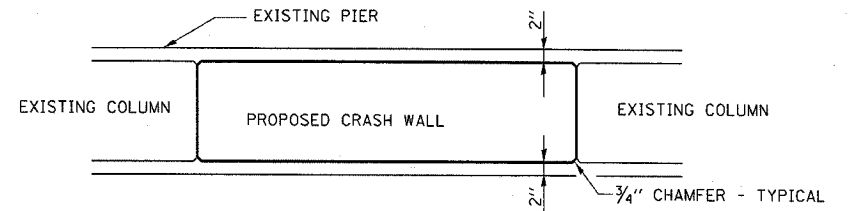
v(E) BARS



s(E) BARS



SECTION A-A



SECTION B-B

* EPOXY GROUTING TO BE DONE IN ACCORDANCE WITH ARTICLE 584 OR THE STANDARD SPECIFICATIONS. COST INCLUDED WITH REINFORCEMENT BARS, EPOXY COATED.

NOTES

- ALL EXPOSED EDGES SHALL HAVE A 3/4 " CHAMFER.
- * V (E) BARS SHALL BE EPOXY GROUTED AND EXTEND A MIN. OF 9" INTO THE EXISTING CONCRETE IN 1" Ø HOLES.
- CONTRACTOR SHOULD EXERCISE CARE NOT TO DAMAGE THE EXISTING REINFORCEMENT WHILE DRILLING HOLES.

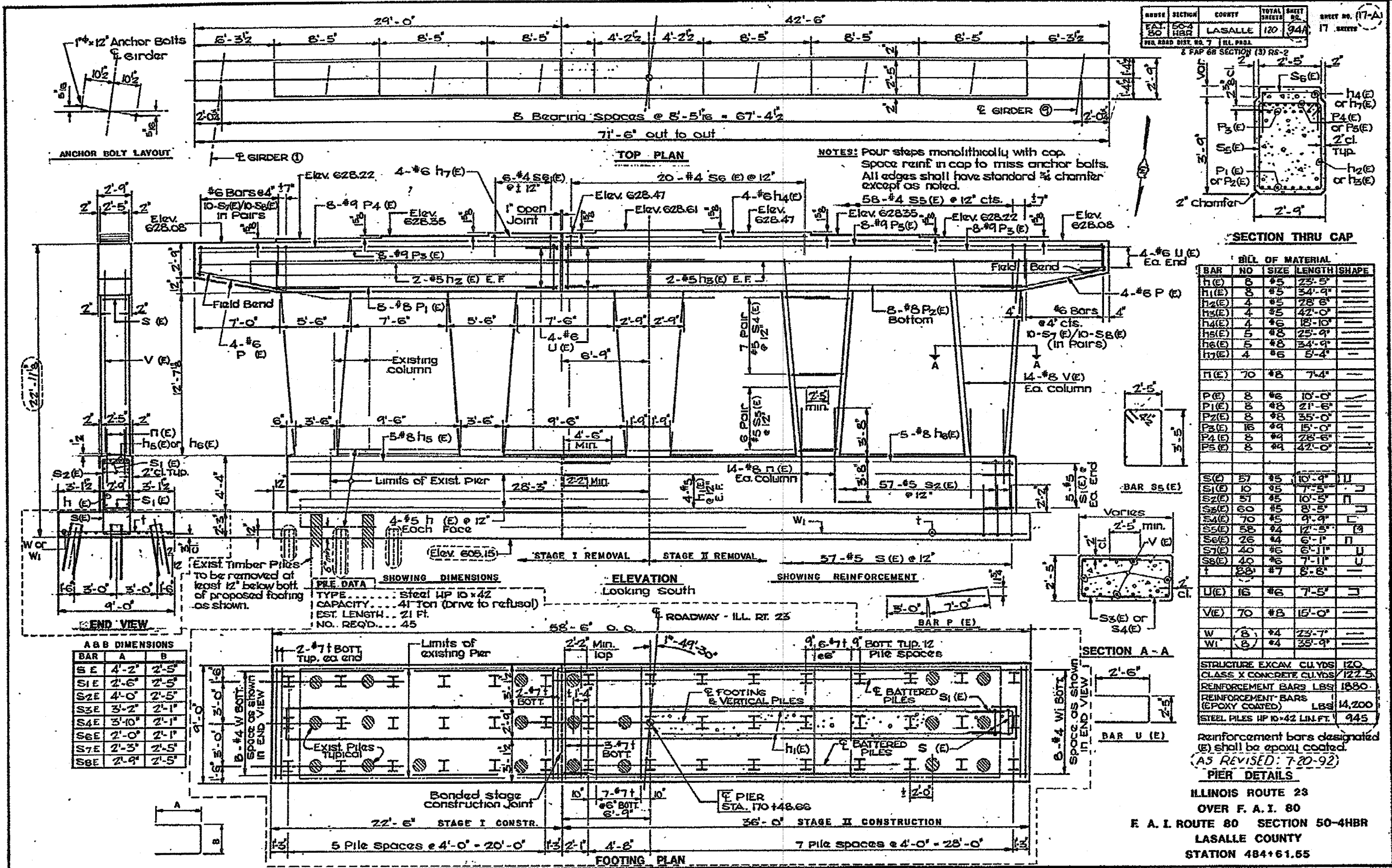
SCHEDULE OF QUANTITIES

LOCATION	BARS	NUMBER	SIZE	LENGTH (ft-in)	REINFORCED BARS EPOXY COATED (pounds)	CONCRETE STRUCTURE (cubic yds)
SN 050-0216	v (E)	48	#6	3'-0"	219	
	h (E)	12	#5	8'-10"	112	
	h1 (E)	12	#5	9'-2"	116	
	s (E)	40	#4	8'-3"	223	
TOTAL					670	6.8

REVISIONS	
NAME	DATE

ILLINOIS DEPARTMENT OF TRANSPORTATION
**CRASH WALL BARRIER
 DETAILS AND SCHEDULE
 SN. 050-0216**

DRAWN BY MWW CHECKED BY



AS BUILT PLANS FOR INFORMATION ONLY