

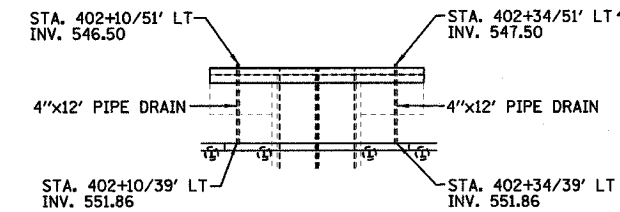
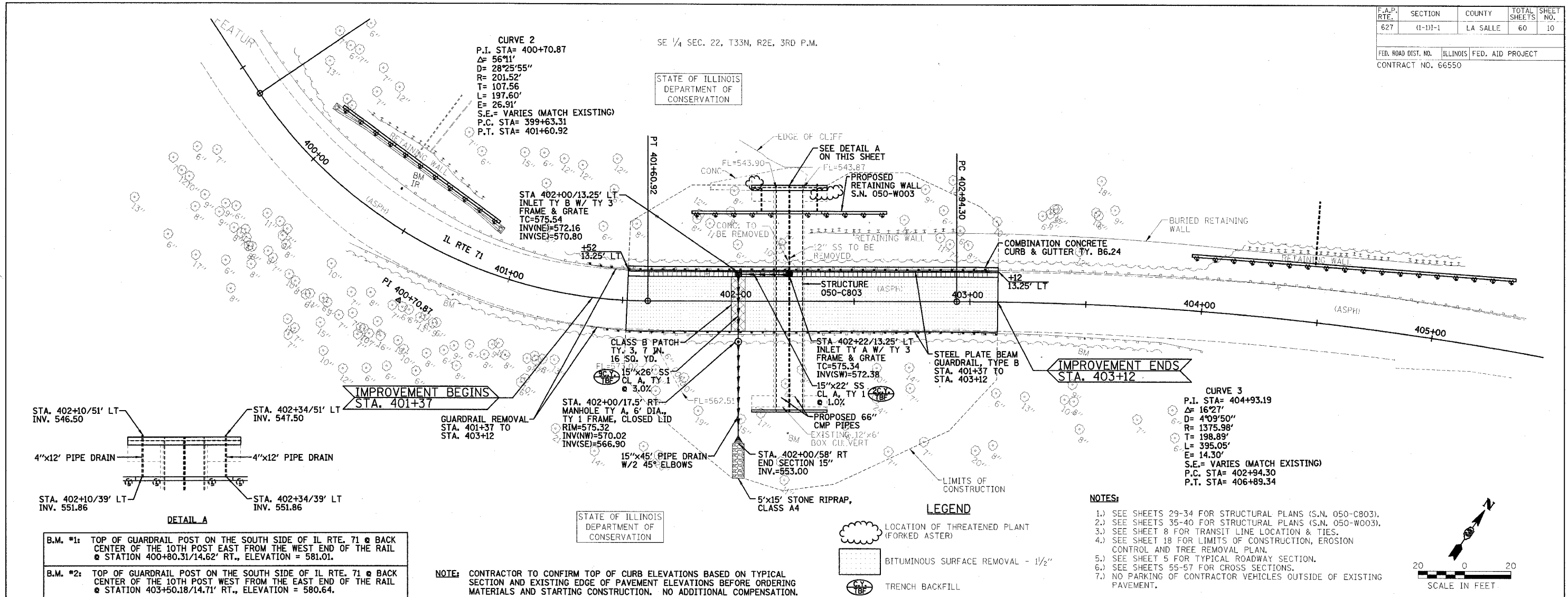
F.A.P. RTE.	SECTION	COUNTY	TOTAL SHEETS	SHEET NO.
627	(1-1)-1	LA SALLE	60	10
FED. ROAD DIST. NO.		ILLINOIS FED. AID PROJECT		
		CONTRACT NO. 66550		

SE 1/4 SEC. 22, T33N, R2E, 3RD P.M.

STATE OF ILLINOIS
DEPARTMENT OF
CONSERVATION

CURVE 2
P.I. STA= 400+70.87
Δ= 56°11'
D= 28°25'55"
R= 201.52'
T= 107.56'
L= 197.60'
E= 26.91'
S.E.= VARIES (MATCH EXISTING)
P.C. STA= 399+63.31
P.T. STA= 401+60.92

CURVE 3
P.I. STA= 404+93.19
Δ= 16°27'
D= 4°09'50"
R= 1375.98'
T= 198.89'
L= 395.05'
E= 14.30'
S.E.= VARIES (MATCH EXISTING)
P.C. STA= 402+94.30
P.T. STA= 406+89.34



B.M. #1: TOP OF GUARDRAIL POST ON THE SOUTH SIDE OF IL RTE. 71 @ BACK CENTER OF THE 10TH POST EAST FROM THE WEST END OF THE RAIL @ STATION 400+80.31/14.62' RT., ELEVATION = 581.01.

B.M. #2: TOP OF GUARDRAIL POST ON THE SOUTH SIDE OF IL RTE. 71 @ BACK CENTER OF THE 10TH POST WEST FROM THE EAST END OF THE RAIL @ STATION 403+50.18/14.71' RT., ELEVATION = 580.64.

NOTE: CONTRACTOR TO CONFIRM TOP OF CURB ELEVATIONS BASED ON TYPICAL SECTION AND EXISTING EDGE OF PAVEMENT ELEVATIONS BEFORE ORDERING MATERIALS AND STARTING CONSTRUCTION. NO ADDITIONAL COMPENSATION.

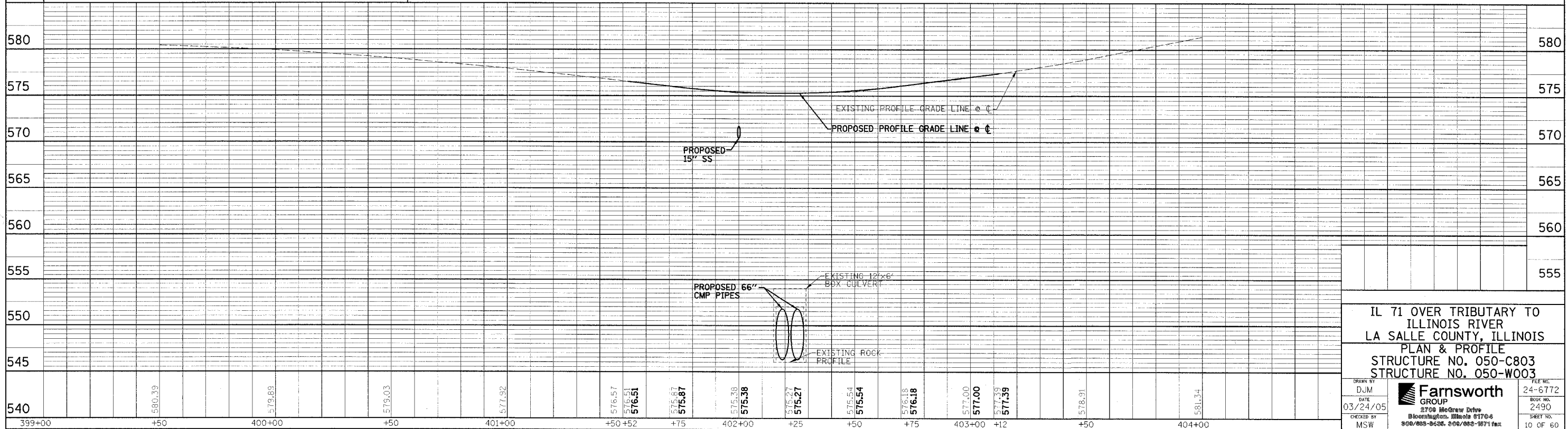
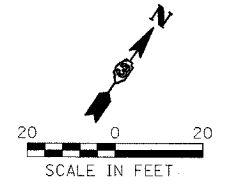
STATE OF ILLINOIS
DEPARTMENT OF
CONSERVATION

LEGEND

- LOCATION OF THREATENED PLANT (FORKED ASTER)
- BITUMINOUS SURFACE REMOVAL - 1/2"
- TRENCH BACKFILL

NOTES:

- 1.) SEE SHEETS 29-34 FOR STRUCTURAL PLANS (S.N. 050-C803).
- 2.) SEE SHEETS 35-40 FOR STRUCTURAL PLANS (S.N. 050-W003).
- 3.) SEE SHEET 8 FOR TRANSIT LINE LOCATION & TIES.
- 4.) SEE SHEET 18 FOR LIMITS OF CONSTRUCTION, EROSION CONTROL AND TREE REMOVAL PLAN.
- 5.) SEE SHEET 5 FOR TYPICAL ROADWAY SECTION.
- 6.) SEE SHEETS 55-57 FOR CROSS SECTIONS.
- 7.) NO PARKING OF CONTRACTOR VEHICLES OUTSIDE OF EXISTING PAVEMENT.



IL 71 OVER TRIBUTARY TO ILLINOIS RIVER
LA SALLE COUNTY, ILLINOIS
PLAN & PROFILE
STRUCTURE NO. 050-C803
STRUCTURE NO. 050-W003

DRAWN BY DJM	FILE NO. 24-6772
DATE 03/24/05	BOOK NO. 2490
CHECKED BY MSW	SHEET NO. 10 OF 60

Farnsworth GROUP
3708 McGraw Drive
Bloomington, Illinois 61704
808/888-8436, 808/888-1871 fax

FILE: c:\userp\dgm\papeng.dgn
DATE: 8-Dec-96 12:10