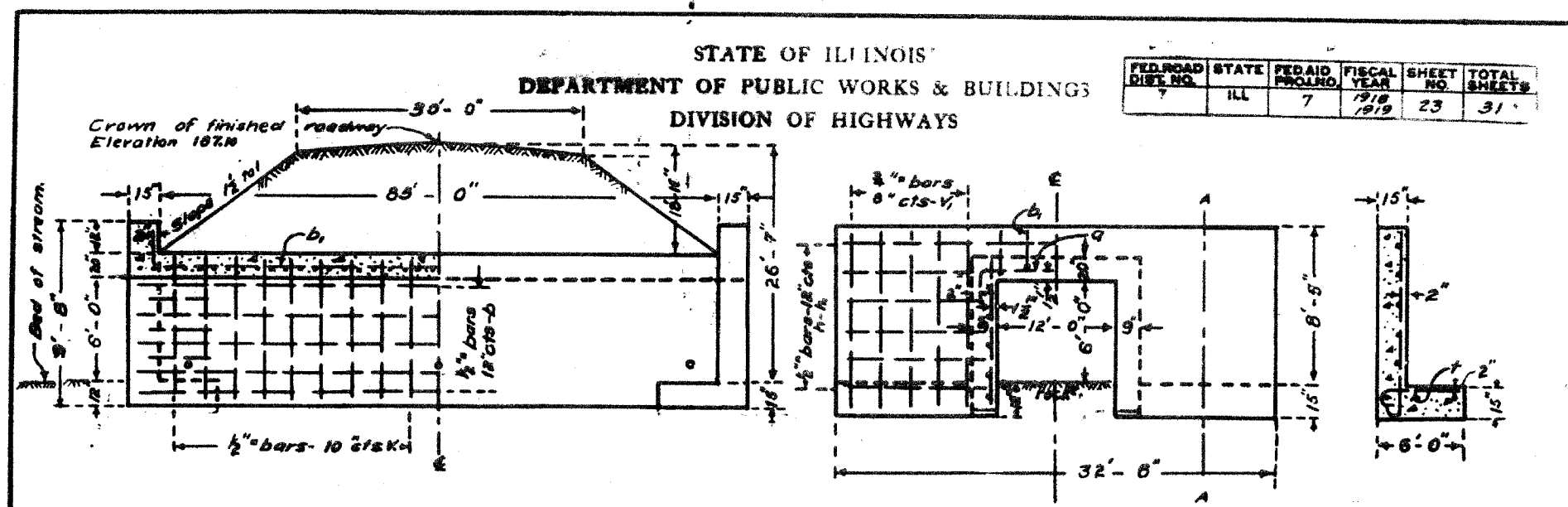


F.A.P. RTE.	SECTION	COUNTY	TOTAL SHEETS	SHEET NO.
627	(1-DI-1	LA SALLE	60	33
STA.		TO STA.		
FED. ROAD DIST. NO.		ILLINOIS FED. AID PROJECT		
CONTRACT NO. 66550		SHEET NO. C5		

OF 6 SHEETS

FED. ROAD DIST. NO.	STATE	FED. AID PROJ. NO.	FISCAL YEAR	SHEET NO.	TOTAL SHEETS
7	ILL	7	1918 1919	23	31

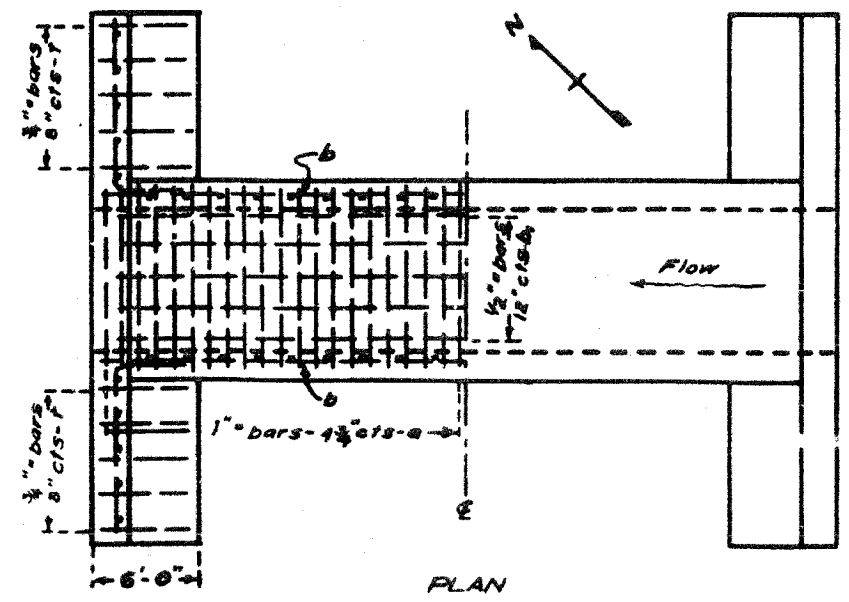
STATE OF ILLINOIS
DEPARTMENT OF PUBLIC WORKS & BUILDINGS
DIVISION OF HIGHWAYS



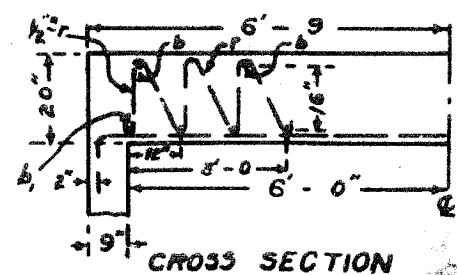
LONGITUDINAL SECTION ELEVATION

END ELEVATION SECTION A-A.

SHOWING REINFORCEMENT SHOWING OUTLINES.



PLAN SHOWING REINFORCEMENT. SHOWING OUTLINES.



CROSS SECTION SHOWING SHEAR BARS. Place one 7" bar on each end of alternate floor bars.

BILL OF MATERIAL.

Bars	No.	Size	Length
v	205	1/2"	8'-6"
v	38	1/2"	11'-6"
h	4	1/2"	17'-0"
h	36	1/2"	11'-0"
a	210	1"	16'-0"
b	60	1/2"	27'-9"
b	36	1/2"	27'-0"
l	60	3/4"	6'-6"
e	226	1/2"	10'-0"
Steel - Lbs.			19240
Concrete - Cu. Yd.			133.0

Class A concrete to be used throughout. Proportions 1:2 1/2:4.

B.M. No. 32. Spike on canyon side in 20" oak 15' left Sta 401+66. Elev. 200.27

FOR INFORMATIONAL USE ONLY

STATION. 403+21.
Federal Aid.
Project 7. Section I.
Morris - Henry Road.
La Salle County.

JBI Rt 7-A

APPROVED: *Clifford Olden*
CHIEF HIGHWAY ENGINEER

PASSED: *Frank J. Smith*
ENGINEER OF DESIGN

Revised 11-11-11

DESIGNED BY: J.M.L.
DRAWN BY: D.J.M.
CHECKED BY: M.S.W.

Farnsworth GROUP
2700 McGraw Drive
Bloomington, Illinois 61704
302/955-5455, 302/955-1871 fax

FILE NO. 24-6772
DATE 03-24-05
SHEET NO. 33 of 60

EXISTING PLANS
IL ROUTE 71
OVER TRIBUTARY TO ILLINOIS RIVER
F.A.P. ROUTE 627 - SEC. (1-DI-1
LA SALLE COUNTY
STATION 402+22.00
STRUCTURE NO. 050-C803