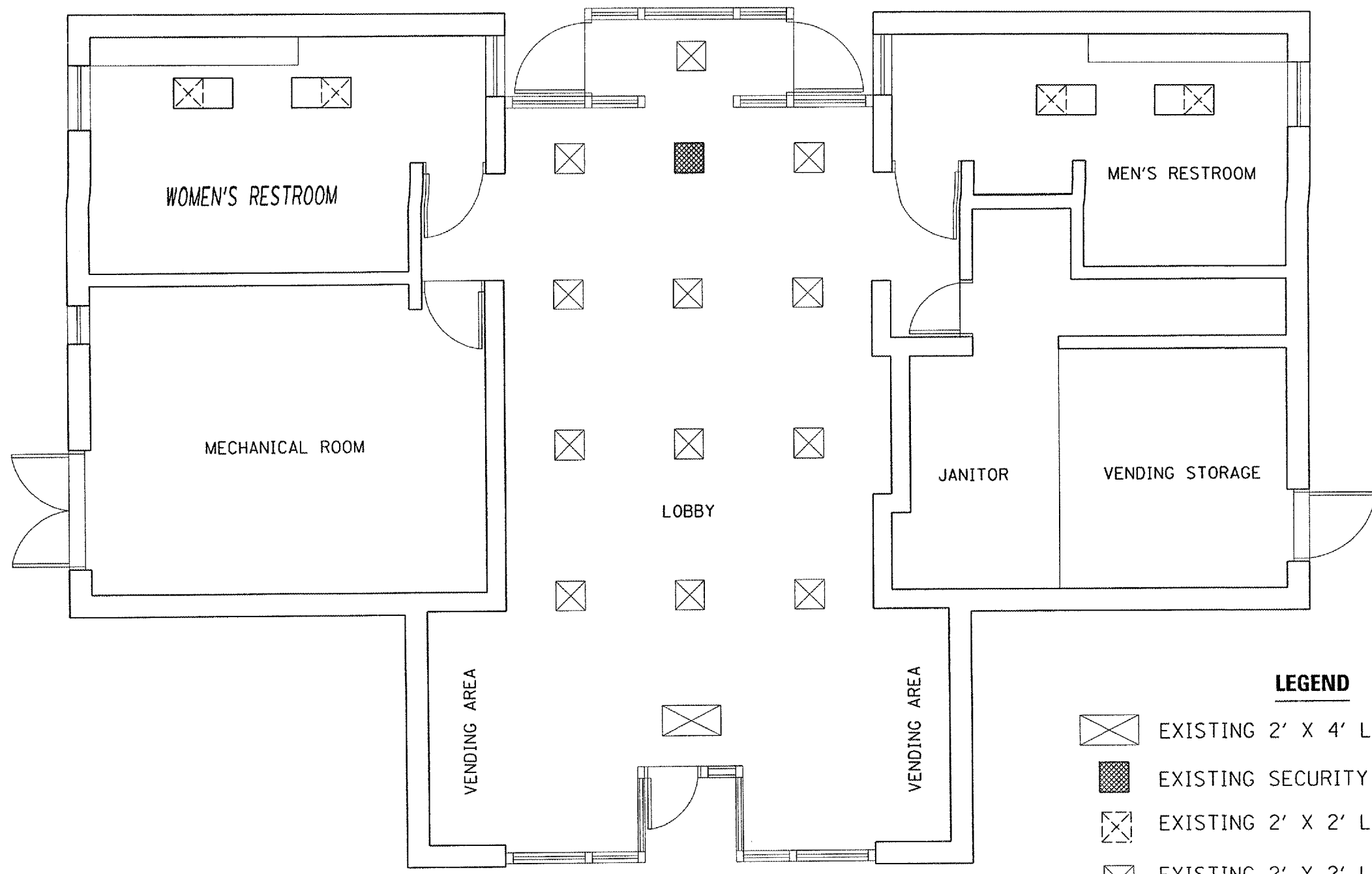
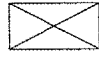






F.A.T. RTE.	SECTION	COUNTY	TOTAL SHEET NO.
55	63-6JRA-2	LIVINGSTON	5
FED. ROAD DIST. NO.		ILLINOIS	FED. AID PROJECT



**FLOOR PLAN**

**LEGEND**

-  EXISTING 2' X 4' LIGHTING FIXTURE TO REMAIN
-  EXISTING SECURITY CAMERA TO REMAIN
-  EXISTING 2' X 2' LIGHTING FIXTURES TO BE REMOVED
-  EXISTING 2' X 2' LIGHTING FIXTURE TO BE REMOVED AND REPLACED WITH NEW HIGH ILLUMINATION FIXTURES
-  NEW 2' X 4' HIGH ILLUMINATION LIGHTING FIXTURES

REVISIONS	
NAME	DATE

ILLINOIS DEPARTMENT OF TRANSPORTATION

**LIGHTING PLAN**

INTERSTATE 55

LIMESTONE REST AREA

NORTHBOUND AND SOUTHBOUND

FEBRUARY 14, 2005 /REST AREA/LIMESTONE/DETAILS.DGN