

INDEX OF SHEETS

- 1 COVER SHEET
- 2 GENERAL NOTES & SUMMARY OF QUANTITIES
- 3 TYPICAL SECTION
- 4 SCHEDULE OF QUANTITIES
- 5 LOCATION MAP
- 6 DETAIL

HIGHWAY STANDARDS

- 000001-04 STANDARD SYMBOLS, ABBREVIATIONS AND PATTERNS
- 701001-01 OFF-ROAD OPERATIONS 2L, 2W, MORE THAN 4.5 m (15') AWAY
- 701006-02 OFF-ROAD OPERATIONS 2L, 2W, 4.5 m (15') TO 600 mm (24") FROM PAVEMENT EDGE
- 701301-02 LANE CLOSURE, 2L, 2W, SHORT TIME OPERATIONS
- 701306-01 LANE CLOSURE, 2L, 2W, SLOW MOVING OPERATIONS DAY ONLY, FOR SPEEDS P 45 MPH
- 701311-02 LANE CLOSURE, 2L, 2W, MOVING OPERATIONS - DAY ONLY
- 702001-05 TRAFFIC CONTROL DEVICES
- 781001-02 TYPICAL APPLICATIONS RAISED REFLECTIVE PAVEMENT MARKERS

STATE OF ILLINOIS
DEPARTMENT OF TRANSPORTATION
DIVISION OF HIGHWAYS
PLANS FOR PROPOSED
FEDERAL AID HIGHWAY
F.A.S. ROUTE 1488 (OLD US 66)
SECTION (16,17,18)RS-2
MCLEAN COUNTY

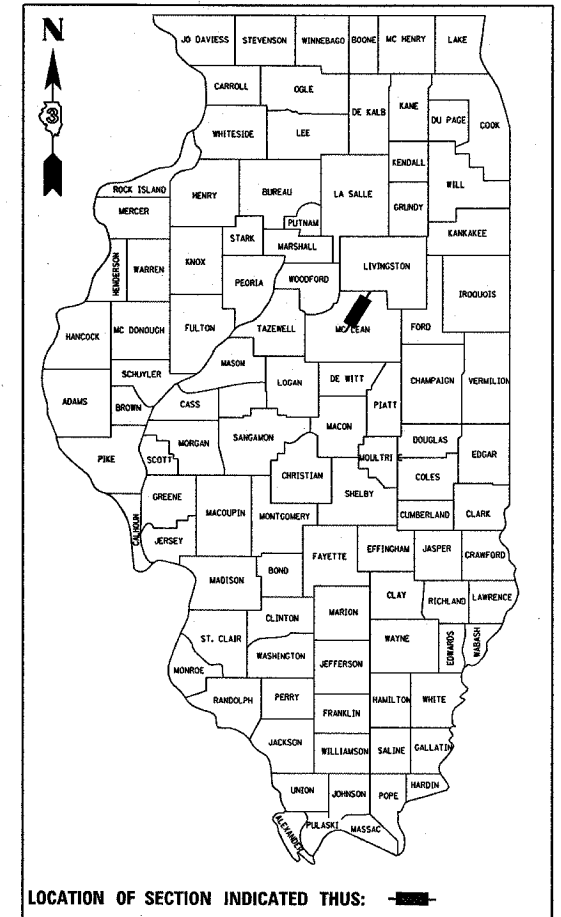
C - 93 - 050 - 05

PROJECT DESCRIPTION

SOUTH OF MORGAN ST IN MCLEAN TO SOUTH OF CH 34 NEAR SHIRLEY
MICROSURFACING, ONE PASS

F.A.S. RTE.	SECTION	COUNTY	TOTAL SHEETS	SHEET NO.
1488	*	MCLEAN	6	1

* (16,17,18)RS-2
 D-93-034-05



FUNCTION CLASSIFICATION
RURAL, MAJOR COLLECTOR
 1998 ADT = 850

STATE OF ILLINOIS
DEPARTMENT OF TRANSPORTATION
DIVISION OF HIGHWAYS

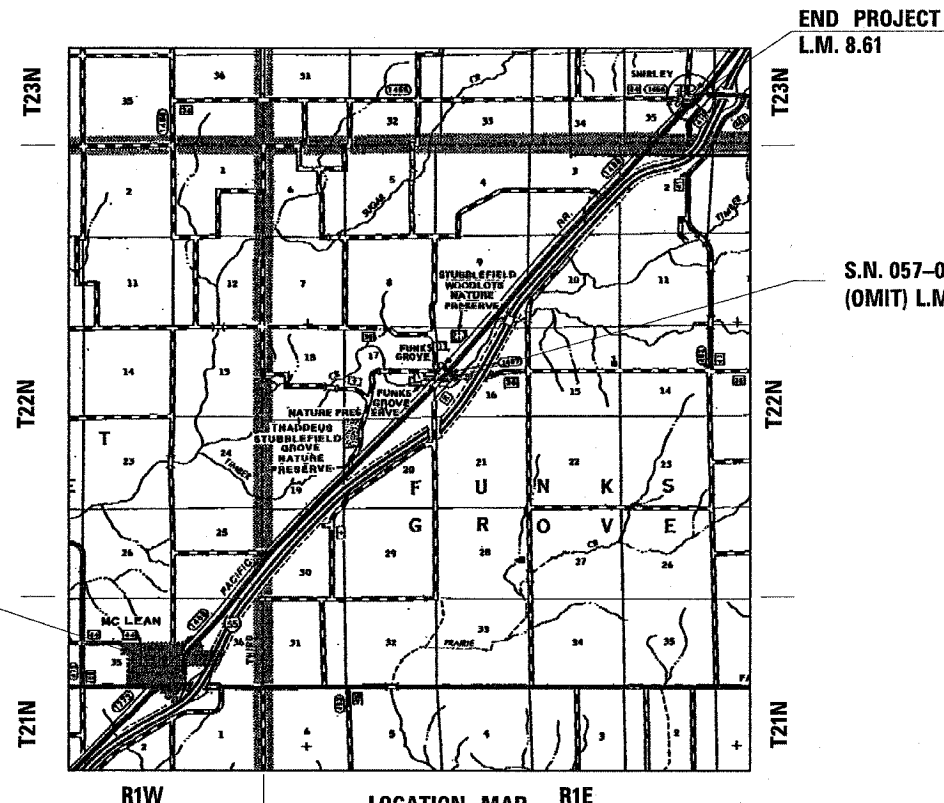
SUBMITTED MARCH 17 2005

 DEPUTY DIRECTOR OF HIGHWAYS, REGION ENGINEER
MAY 13 2005

 ENGINEER OF DESIGN AND ENVIRONMENT
MAY 13 2005

 DIRECTOR OF HIGHWAYS, CHIEF ENGINEER

PRINTED BY THE AUTHORITY
OF THE STATE OF ILLINOIS



S.N. 057-0003
 (OMIT) L.M. 4.49 TO L.M. 4.51

BEGIN PROJECT
 L.M. 0.00

END PROJECT
 L.M. 8.61

LOCATION MAP
 NOT TO SCALE
 GROSS LENGTH = 45,460.80 FT. = 8.61 MI.
 NET LENGTH = 45,355.20 FT. = 8.59 MI.

MICROFILMED _____
 REEL NUMBER _____
 AWARDED _____
 RESIDENT ENGINEER _____
 AS BUILT CHANGES WERE MADE
 ON THE FOLLOWING SHEETS _____

JULIE 1-800-892-0123

DISTRICT 3 NO. (815) 434-6131

PROJECT ENGINEER: DAN DRAPER
UNIT CHIEF: PAT BRABOY
TOWNSHIP: MOUNT HOPE, FUNKS GROVE, DALE

CONTRACT NO. 66558