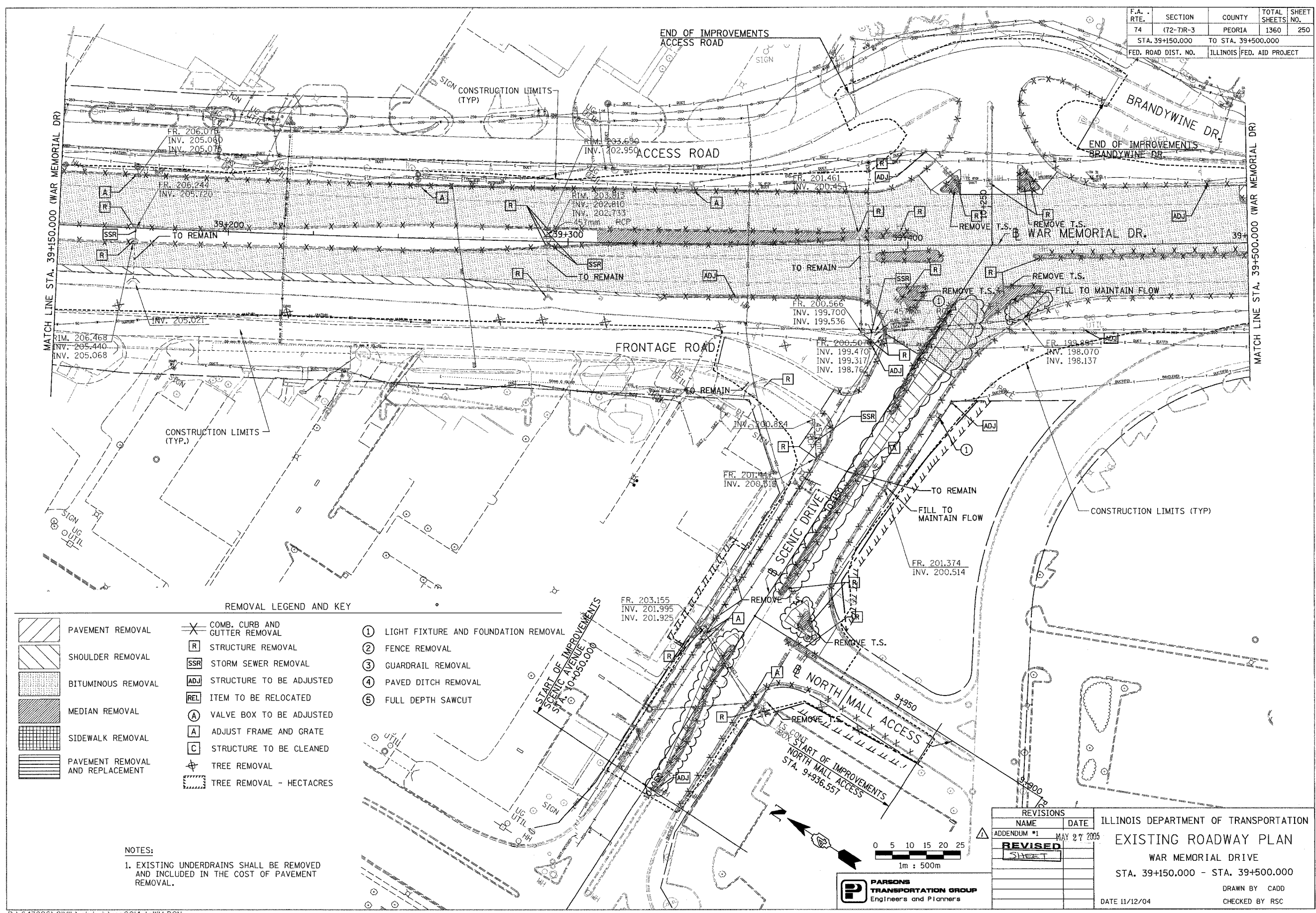


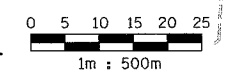
F.A. RTE.	SECTION	COUNTY	TOTAL SHEETS	SHEET NO.
74	(72-TR-3	PEORIA	1360	250
STA. 39+150.000		TO STA. 39+500.000		
FED. ROAD DIST. NO.		ILLINOIS FED. AID PROJECT		



REMOVAL LEGEND AND KEY

	PAVEMENT REMOVAL		COMB. CURB AND GUTTER REMOVAL		LIGHT FIXTURE AND FOUNDATION REMOVAL
	SHOULDER REMOVAL		STRUCTURE REMOVAL		FENCE REMOVAL
	BITUMINOUS REMOVAL		STORM SEWER REMOVAL		GUARDRAIL REMOVAL
	MEDIAN REMOVAL		STRUCTURE TO BE ADJUSTED		PAVED DITCH REMOVAL
	SIDEWALK REMOVAL		ITEM TO BE RELOCATED		FULL DEPTH SAWCUT
	PAVEMENT REMOVAL AND REPLACEMENT		VALVE BOX TO BE ADJUSTED		
			ADJUST FRAME AND GRATE		
			STRUCTURE TO BE CLEANED		
			TREE REMOVAL		
			TREE REMOVAL - HECTARES		

NOTES:
 1. EXISTING UNDERDRAINS SHALL BE REMOVED AND INCLUDED IN THE COST OF PAVEMENT REMOVAL.



PARSONS TRANSPORTATION GROUP
 Engineers and Planners

REVISIONS	
NAME	DATE
ADDENDUM #1	MAY 27 2005
REVISED	
SHEET	

ILLINOIS DEPARTMENT OF TRANSPORTATION
EXISTING ROADWAY PLAN
 WAR MEMORIAL DRIVE
 STA. 39+150.000 - STA. 39+500.000
 DATE 11/12/04
 DRAWN BY CADD
 CHECKED BY RSC