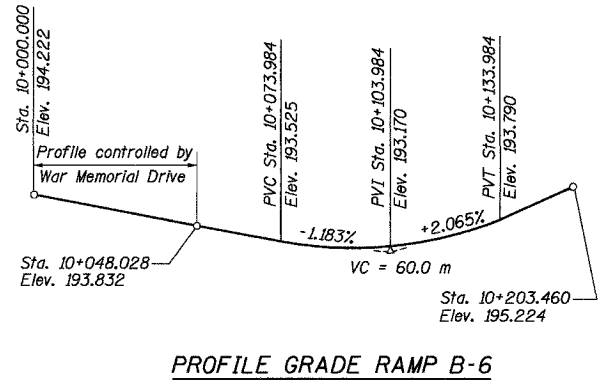
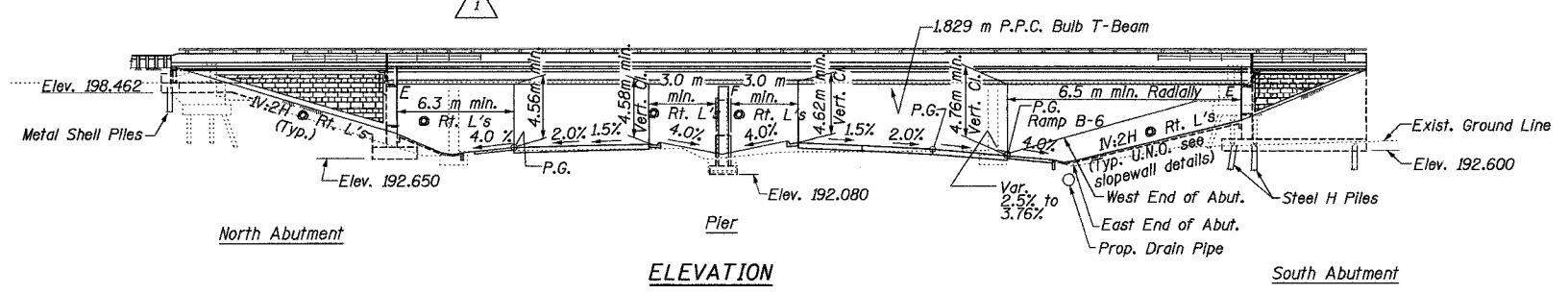


Date: 04/20/2005 Time: 03:03:43 PM

B. M. : '□' cut on North headwall N.W. of existing bridge at ramp for W.B. I-74 to W.B. War Memorial Dr. Elev. 194.167
 P.K. Nail on S. Side of F.A. 49 (U.S. 150 Spur) Bridge over I-74 West of I-74 Ramp Elevation 194.293 m.
 Existing Structure : S.N. 072-0026 is a four span bridge built as F.A.I. Rt. 31 Spur over War Memorial Drive (U.S. Rt. 150), Project U-107(12), Section (117-3HB) in 1963.
 The Superstructure consists of a R.C. Deck 77.91 m long by 14.02 m wide supported on wide flange steel stringers.
 The Existing Superstructure, North and South Abutments and Piers shall be removed as required. Traffic along ramps B-3 and B-5 will be detoured while traffic along War Memorial Drive will be maintained during construction.

Note: All dimensions are in millimeters (mm) except as noted.
 For Limits of Protective Shield see Sheet 2, Note 12.



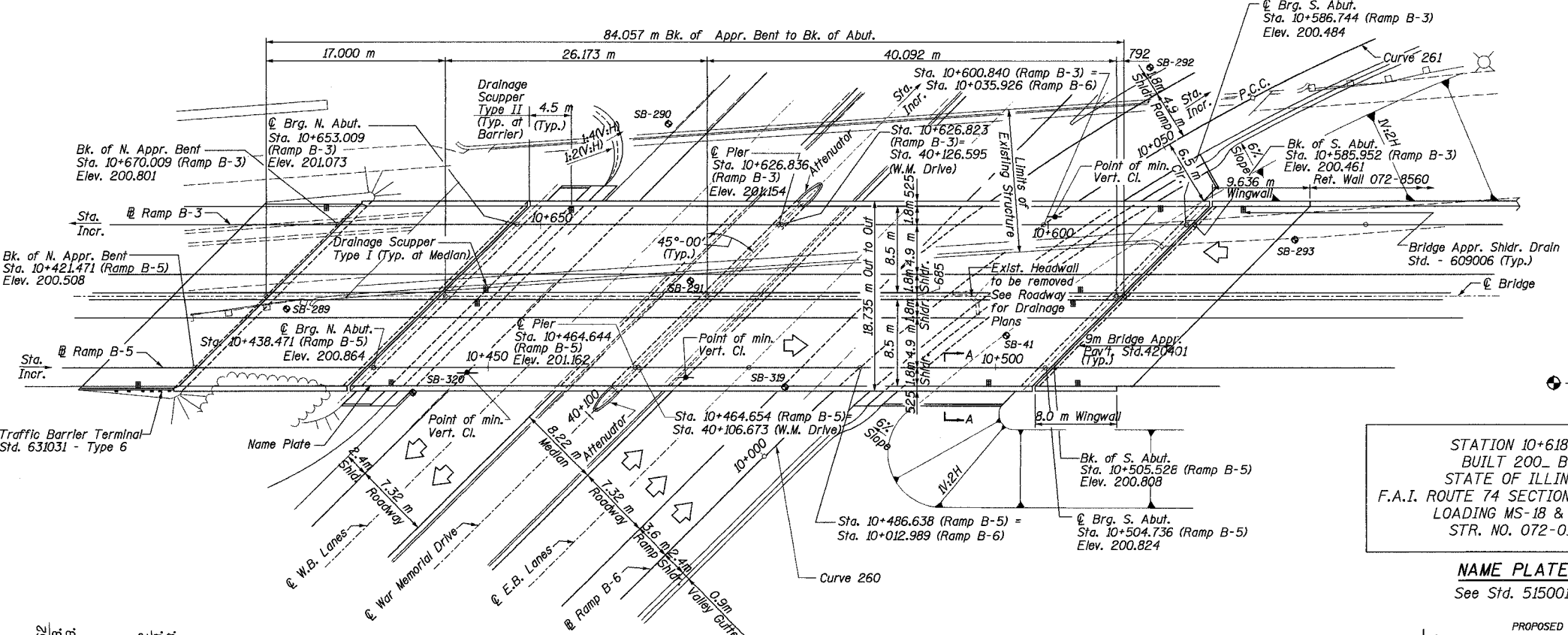
DESIGN SPECIFICATIONS
 1996 AASHTO with Interims through 2000.
LOADING MS18 & ALT.
 Allow 2.4 kN/m² for future wearing surface.
DESIGN STRESSES

FIELD UNITS
 f'c = 24 MPa
 fy = 400 MPa (Reinf.)
PRECAST PRESTRESSED UNITS
 f'c = 42 MPa
 f'ci = 35 MPa
 fs = 1,860 MPa (12.7 mm φ low lax. strands)
 fsj = 1,395 MPa (12.7 mm φ low lax. strands)

SEISMIC DATA
 Seismic Performance Category (SPC) = A
 Bedrock Acceleration Coefficient (A) = 0.043g
 Site Coefficient (S) = 1.0

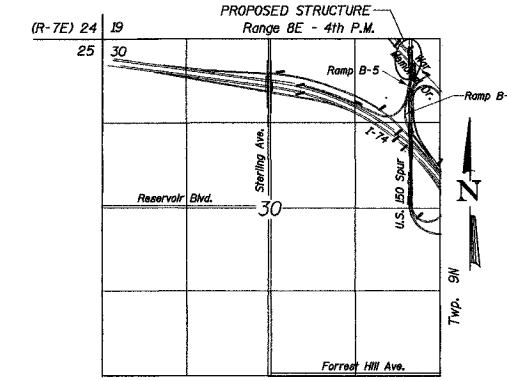
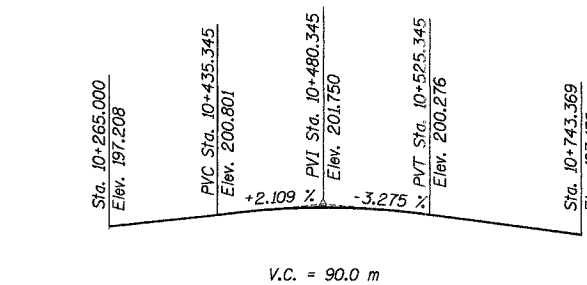
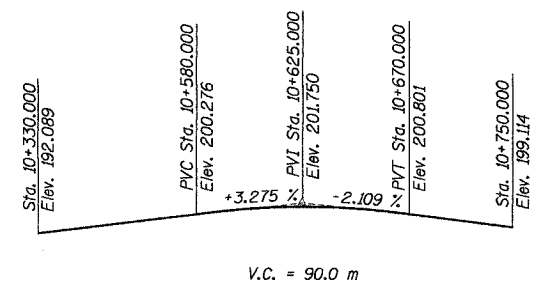
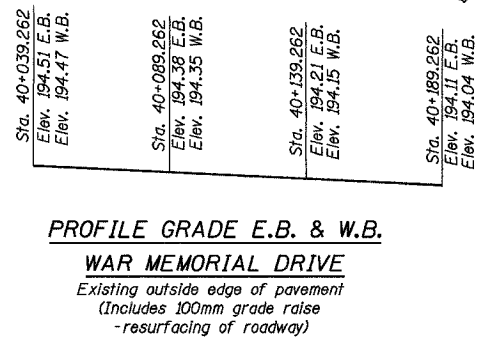
CURVE DATA

Curve	Δ	R	T	L	E	PC	PI	PCC	SE	Transition
War Memorial Dr. Curve 200	20° 20' 45"	5,374.349 m	964.381 m	1,908.452 m	85.840 m	10+000.000	10+030.227	10+060.000	2.5 %	N/A
Ramp B-6 Curve 260	17° 11' 19"	200.00 m	30.227 m	60.00 m	2.271 m	10+000.000	10+030.227	10+060.000	N/A	10+027 to 10+060
Ramp B-6 Curve 261	18° 25' 26"	125.00 m	20.272 m	40.195 m	1.633 m	10+060.000	10+080.272	10+100.195	8.0 %	10+060 to 10+076



STATION 10+618.61
 BUILT 200_ BY
 STATE OF ILLINOIS
 F.A.I. ROUTE 74 SECTION (72-7) R-3
 LOADING MS-18 & ALT.
 STR. NO. 072-0190

NAME PLATE
 See Std. 515001



Designed by: MBQ
 Checked by: AK
 Drafted by: JV
 Checked by: AK

REVISION	DATE	DESCRIPTION
1	3/28/05	Protective Shield Note added

STATE OF ILLINOIS
 DEPARTMENT OF TRANSPORTATION

GENERAL PLAN

RAMPS B-3 AND B-5 OVER WAR MEMORIAL DR. AND RAMP B-6
 F.A.I. ROUTE 74 SECTION (72-7) R-3
 PEORIA COUNTY STA. 10+618.61 (RAMP B-3)
 STA. 10+472.60 (RAMP B-5)
 STRUCTURE NUMBER 072-0190

PARSONS TRANSPORTATION GROUP
 CHICAGO, ILLINOIS

DRAWING NO.	SCALE	DATE	SHEET NO.
1	N.T.S.	2-21-03	1

REVISED SHEET MAY 27 2005