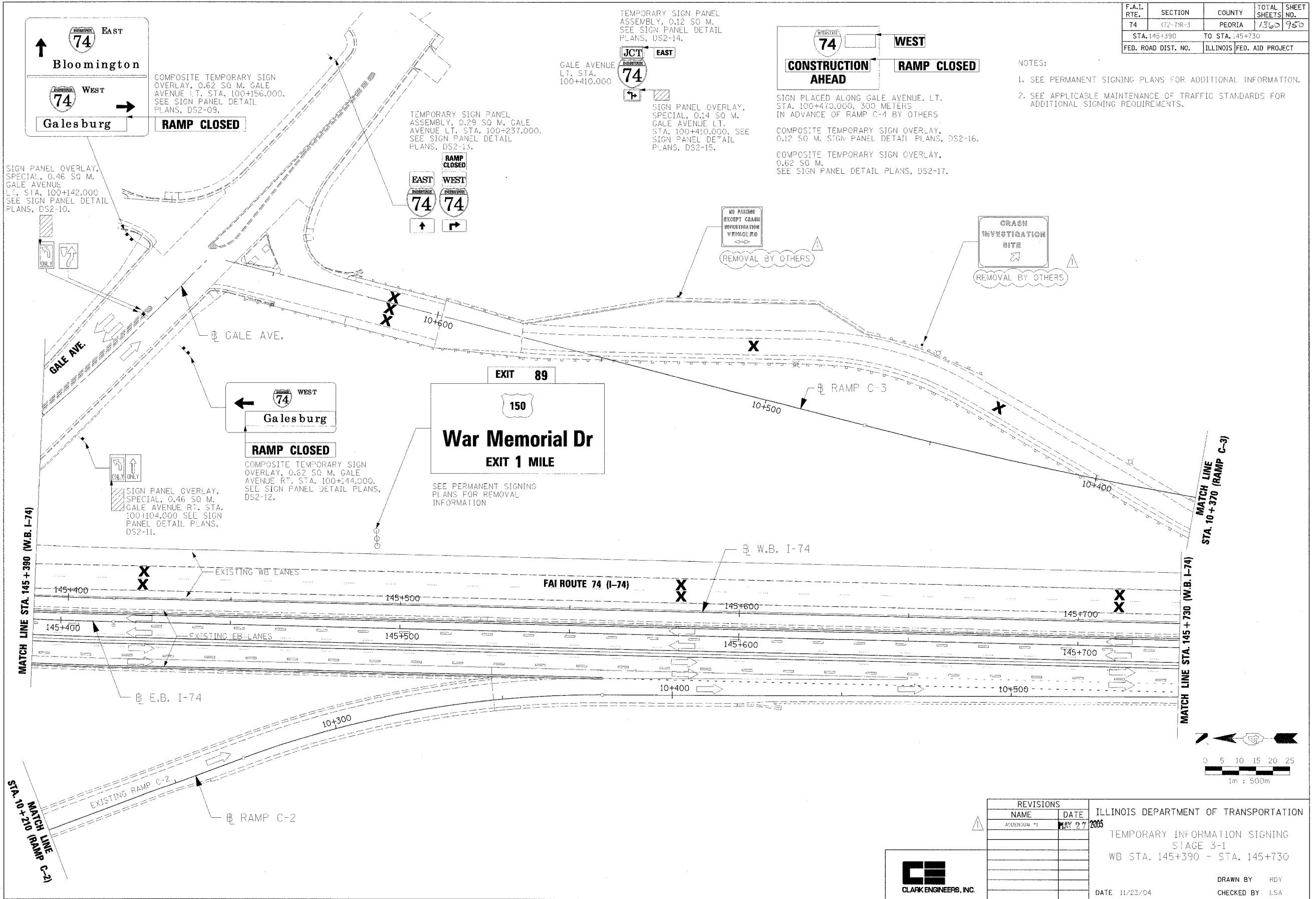


F.A.I. RTE.	SECTION	COUNTY	TOTAL SHEETS	SHEET NO.
74	(72-74R-3)	PEORIA	1360	750
STA. 145+390		TO STA. 145+730		
FED. ROAD DIST. NO.		ILLINOIS FED. AID PROJECT		

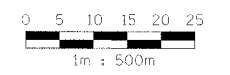
- NOTES:
- SEE PERMANENT SIGNING PLANS FOR ADDITIONAL INFORMATION.
  - SEE APPLICABLE MAINTENANCE OF TRAFFIC STANDARDS FOR ADDITIONAL SIGNING REQUIREMENTS.



REVISIONS		ILLINOIS DEPARTMENT OF TRANSPORTATION
NAME	DATE	
ADDENDUM #1	MAY 27 2005	TEMPORARY INFORMATION SIGNING STAGE 3-1 WB STA. 145+390 - STA. 145+730

DATE 11/23/04

DRAWN BY RDY  
CHECKED BY LSA



1510005-001.dwg 4/26/2005 1:37:40 PM