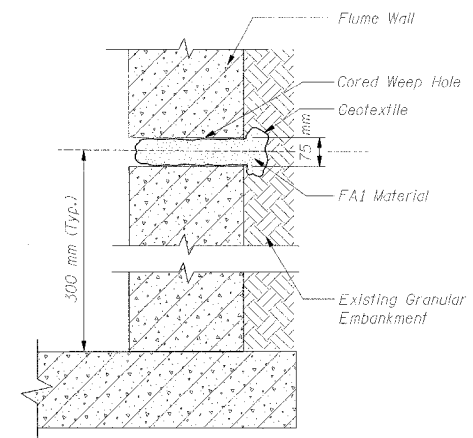
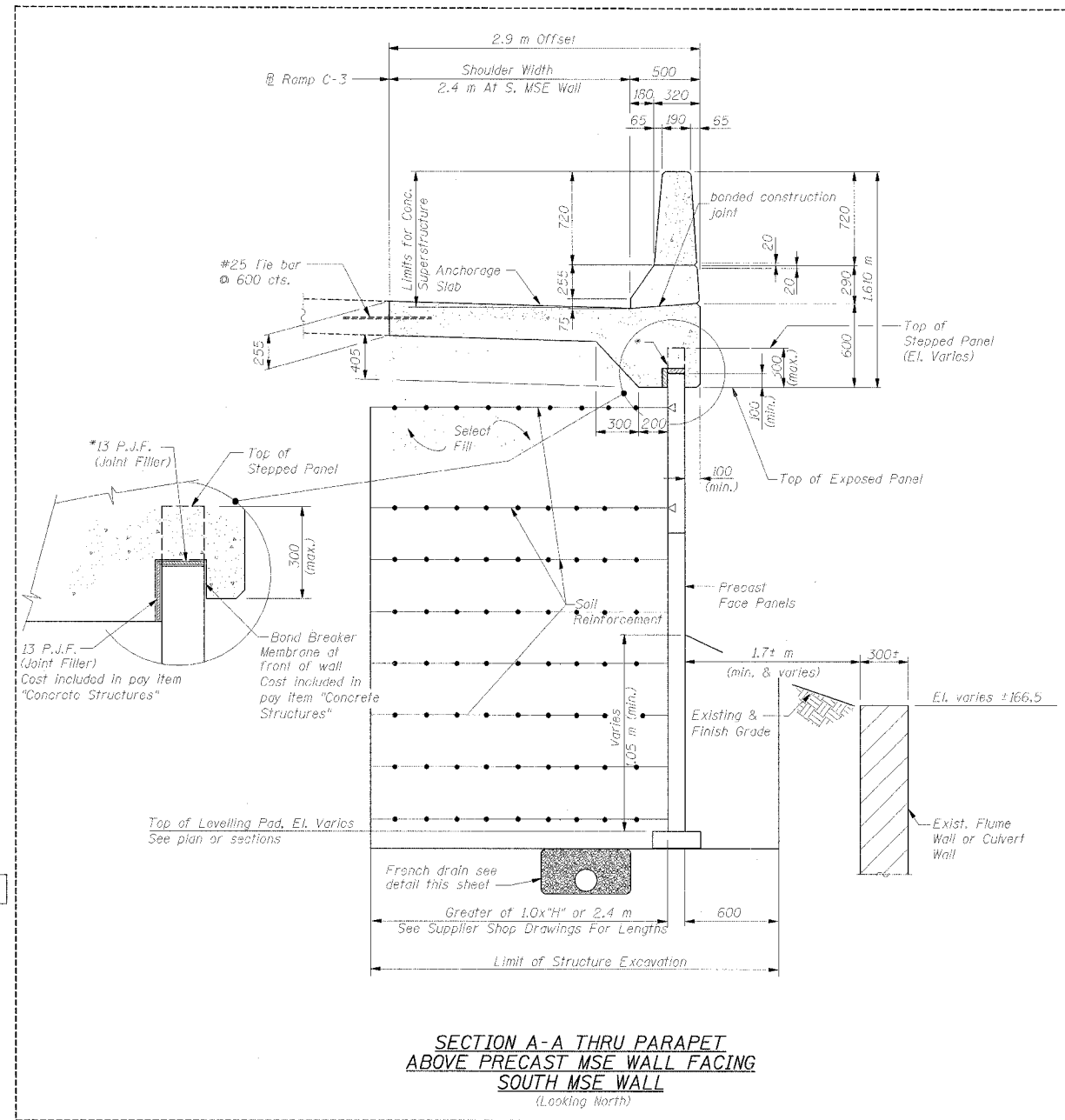
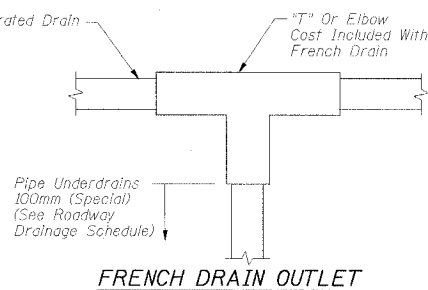
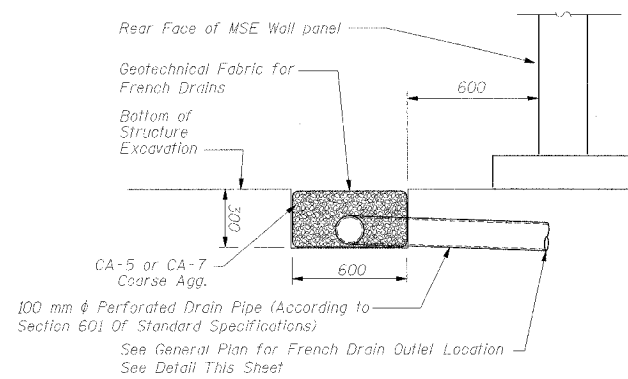
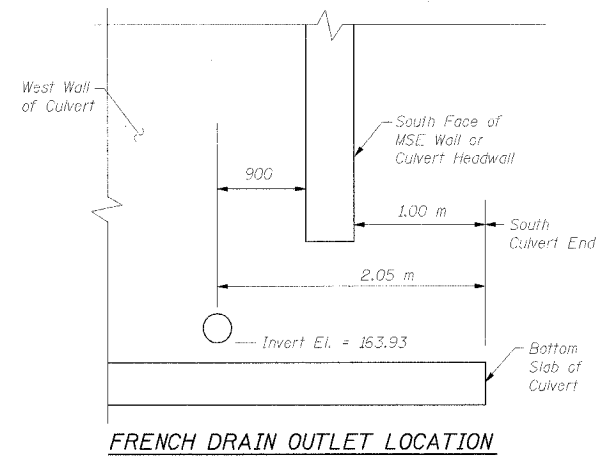


STATE OF ILLINOIS
DEPARTMENT OF TRANSPORTATION

ROUTE NO.	SECTION	COUNTY	TOTAL SHEETS	SHEET NO.
F.A.I. 74	(72-7)R-3	PEORIA	1360	1053
FED. AID DIST. NO. 7	ILLINOIS	FED. AID PROJECT		

Contract No. 68200

SHEET NO. 3
OF 9 SHEETS



- WEEP HOLE NOTES:**
- Proposed weep hole installation procedure:
- Core the hole (75 mm diameter) thru the existing wall at the location shown (every 3.0 m). Locate and clear existing reinforcement.
 - Drill out approximately 0.6-0.7 liter of soil behind the wall.
 - Roll 1.7-1.8 liter of FA1 material in geotextile, wrap it all around, make the roll approximately 70 mm in diameter and tie the roll securely with elastic.
 - Push the roll into the cored hole all the way.

DESIGNED	GEK
CHECKED	
DRAWN	GEK
CHECKED	

**SOUTH MSE WALL CROSS SECTION
RAMP C-3 OVER DRY RUN CREEK
F.A.I. RTE 74(I-74) SECTION (72-7)R-3
PEORIA COUNTY
STA. 10+190.00 TO STA. 10+277.94 (RAMP C-3)
STRUCTURE NUMBER 072-8619 - WALL 18C**

ADDENDUM #1 MAY 27 2005



111 NE Jefferson Ave.
Peoria, Illinois 61602
PH(309)676-8464
FAX(309)676-5445

7/28/05 10:45 AM