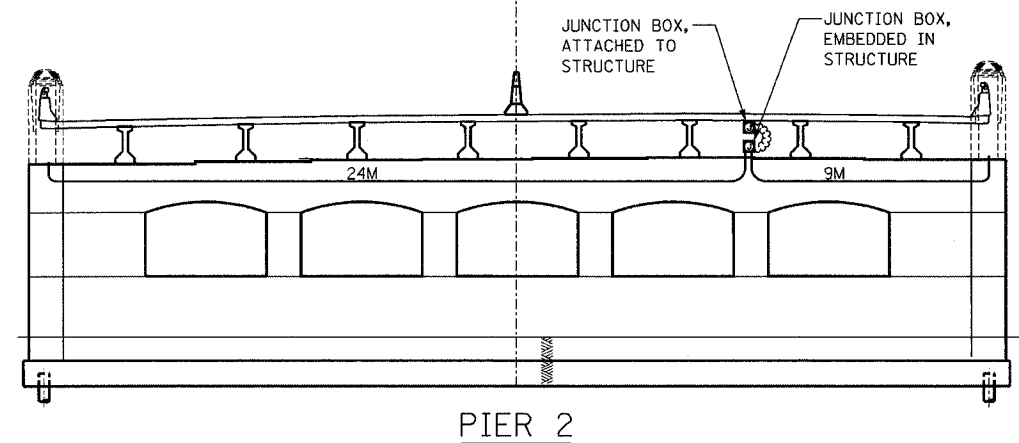
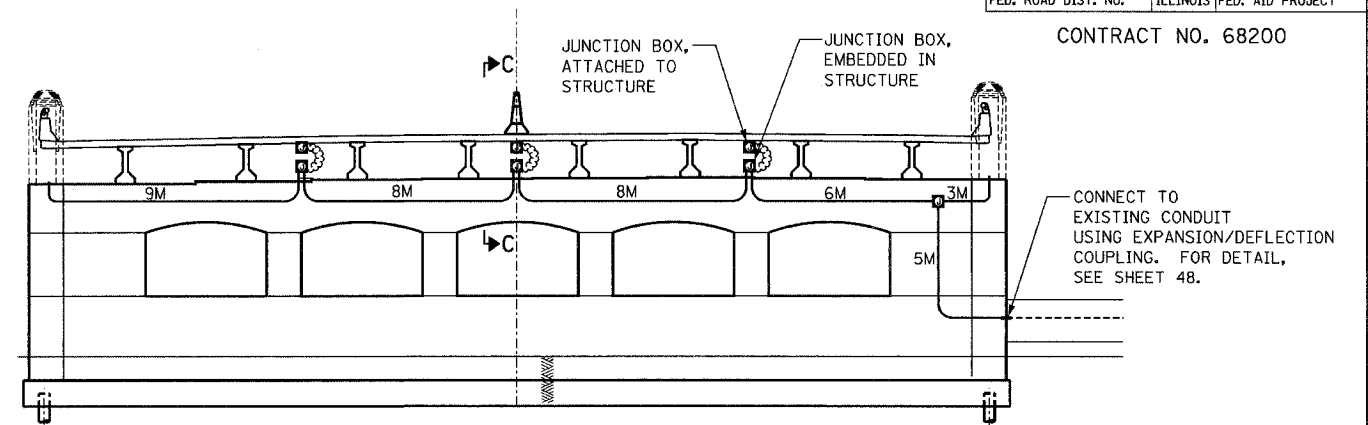


F.A.I. RTE.	SECTION	COUNTY	TOTAL SHEETS	SHEET NO.
74	(72-7)R-3	PEORIA	1360	1209
STA.	TO STA.			
FED. ROAD DIST. NO.	ILLINOIS FED. AID PROJECT			

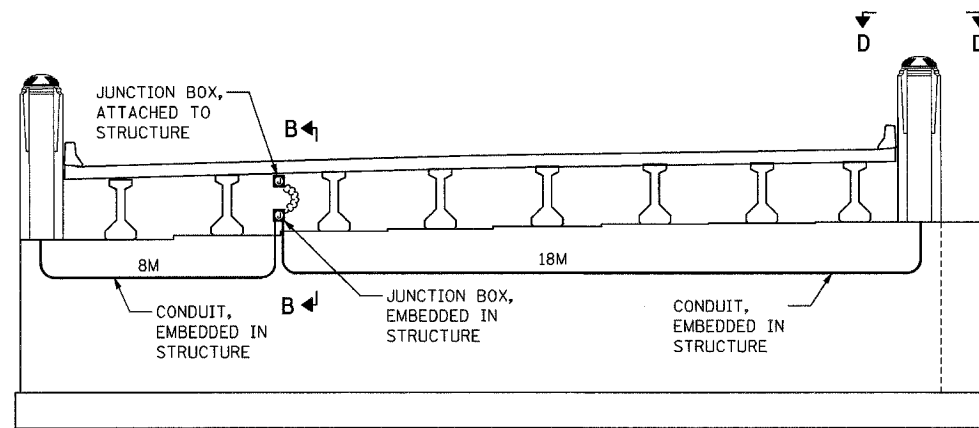
CONTRACT NO. 68200



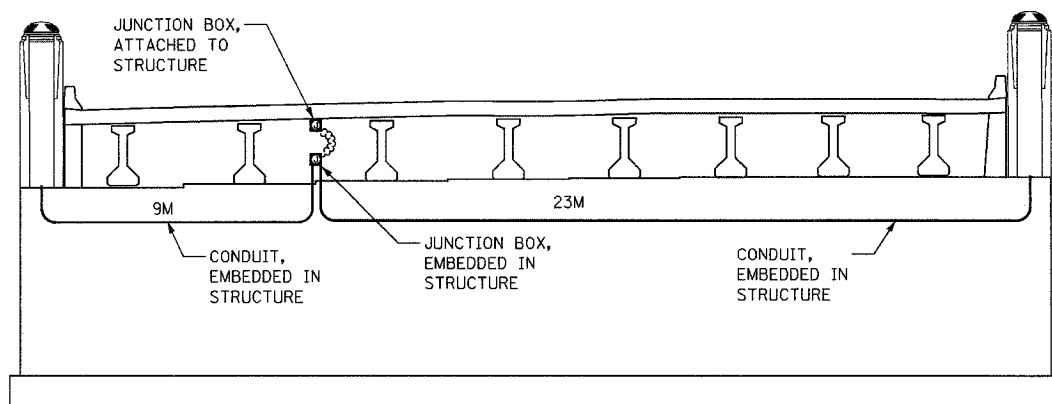
PIER 2



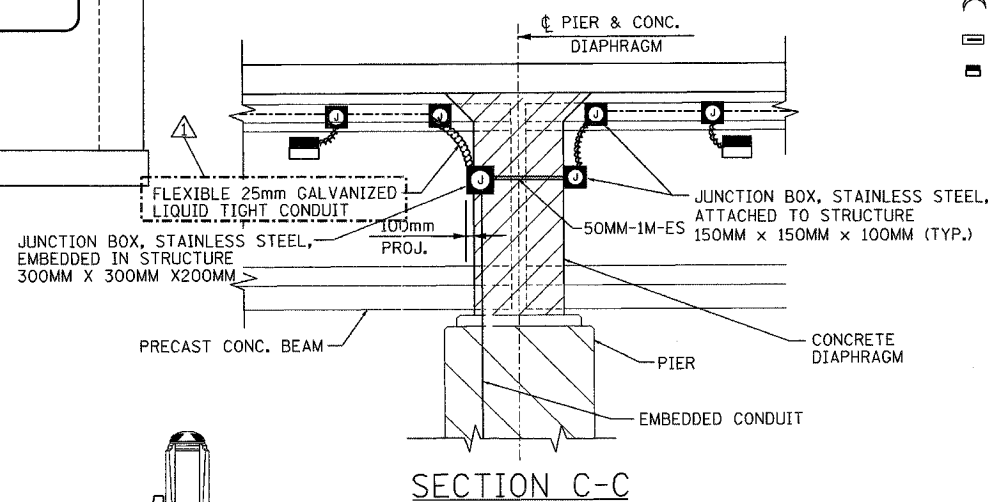
PIER 1 - SECTION A-A



SOUTH ABUTMENT ELEVATION
(LOOKING SOUTH)



NORTH ABUTMENT ELEVATION
(LOOKING NORTH)



SECTION C-C

- LEGEND**
- PROPOSED JUNCTION BOX
 - PROPOSED ATTACHED CONDUIT, 25mm DIA., GALVANIZED STEEL
 - PROPOSED EMBEDDED CONDUIT, 50mm DIA. PVC SCHEDULE 40
 - PROPOSED LIQUID-TIGHT FLEXIBLE CONDUIT, 25mm
 - EMBEDDED CONCRETE INSERT (SEE DETAIL SHEET #46)
 - UNDERPASS LUMINAIRE, HPSV, 100 WATT, 240 VOLT (SEE DETAIL SHEET #46).

- NOTES:**
1. ALL EMBEDDED CONDUIT SHALL BE 50mm, PVC - SCH. 40, UNLESS OTHERWISE INDICATED.
 2. ALL JUNCTION BOXES ATTACHED TO STRUCTURE SHALL BE STAINLESS STEEL, 150mmx150mmx100mm, UNLESS OTHERWISE NOTED.
 3. ALL JUNCTION BOXES EMBEDDED IN STRUCTURE SHALL BE STAINLESS STEEL, 300mmx300mmx200mm, UNLESS OTHERWISE NOTED.
 4. ALL CONDUIT BENDS AND RADII SHALL BE IN ACCORDANCE WITH IDOT STANDARD SPECIFICATIONS.
 5. FOR SECTION C-C AND D-D, SEE SHEET 24
 6. FOR QUANTITIES, SEE SHEET 24

LIGHTING SHEET 25 OF 64

REVISIONS		ILLINOIS DEPARTMENT OF TRANSPORTATION
NAME	DATE	
ADDENDUM #1	MAY 27 2005	BRIDGE LIGHTING PLAN RAMPS B-1 AND B-4 OVER I-74 DRAWN BY DJK CHECKED BY MKR DATE: 11/12/04

ab alfred benesch & company
CONSULTING ENGINEERS
205 NORTH MICHIGAN AVENUE, CHICAGO, ILLINOIS 60601

m:\proj\35573\LIGHTING\4-Contract\1011002-7a2br_bldg.dgn
 1:38:23 PM
 4/21/2005