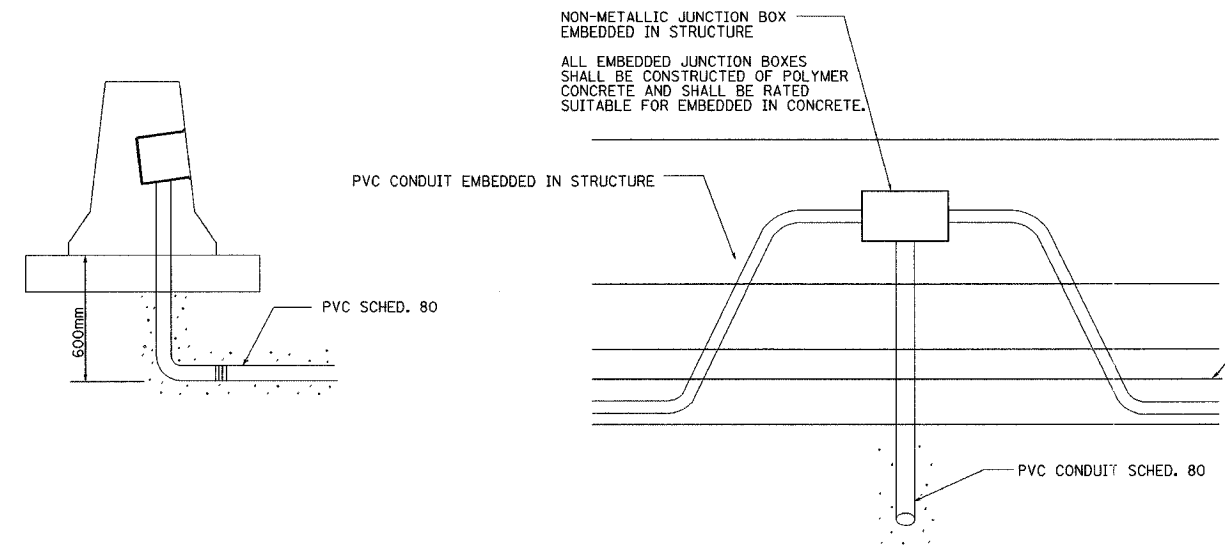
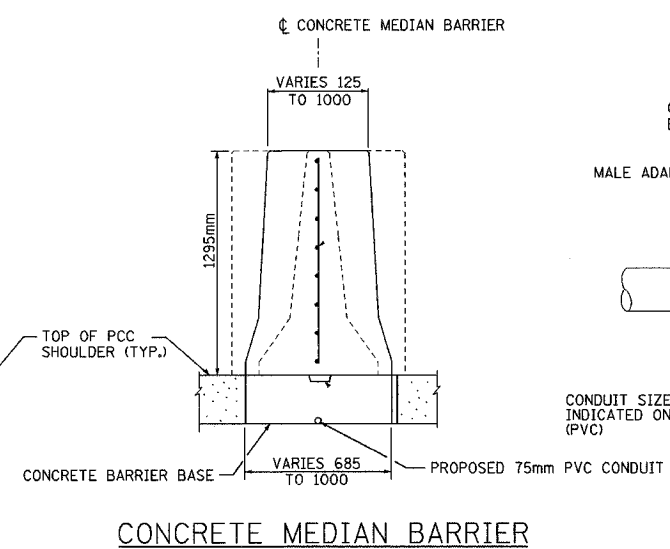


F.A.I. RTE.	SECTION	COUNTY	TOTAL SHEETS	SHEET NO.
74	(72-71R-3)	PEORIA	1360	1227
STA.		TO STA.		
FED. ROAD DIST. NO.		ILLINOIS FED. AID PROJECT		

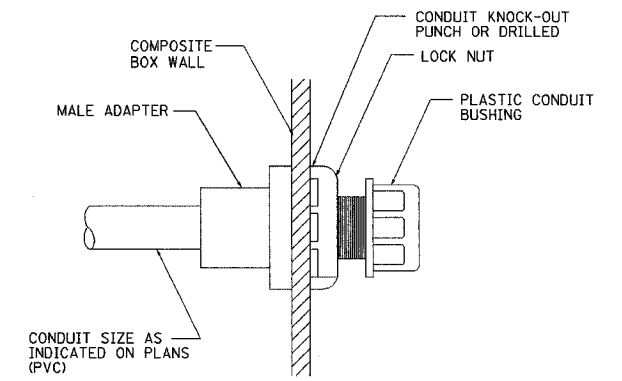
CONTRACT NO. 68200



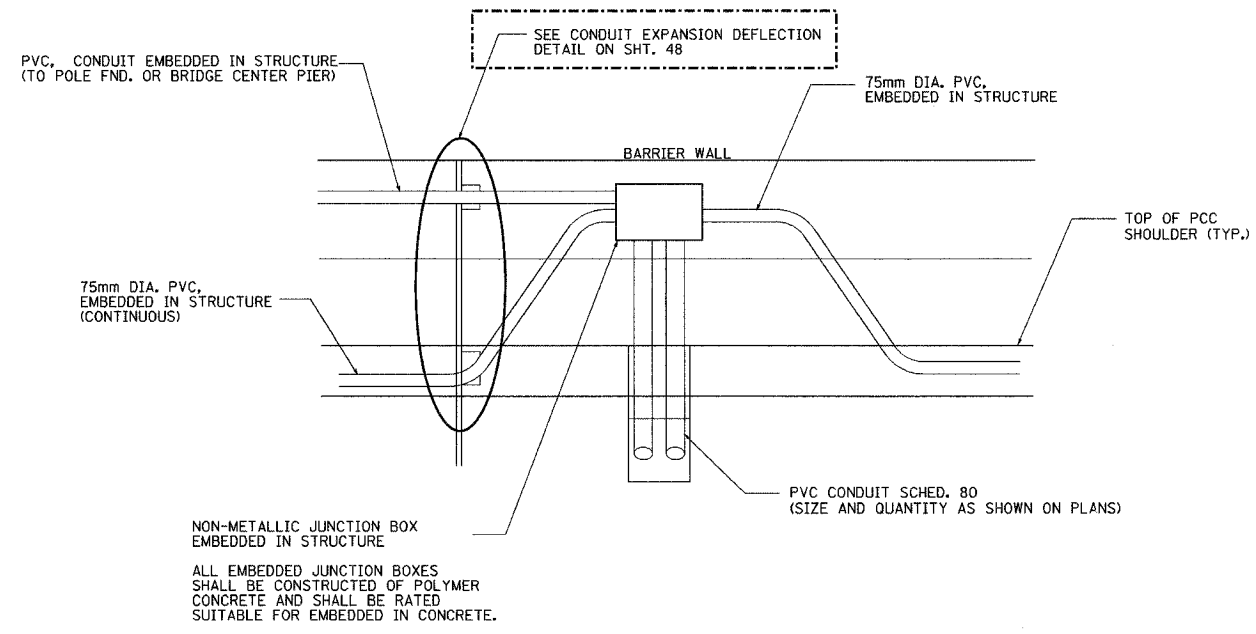
JUNCTION BOX EMBEDDED IN BARRIER WALL - DETAIL 1  
N.T.S.



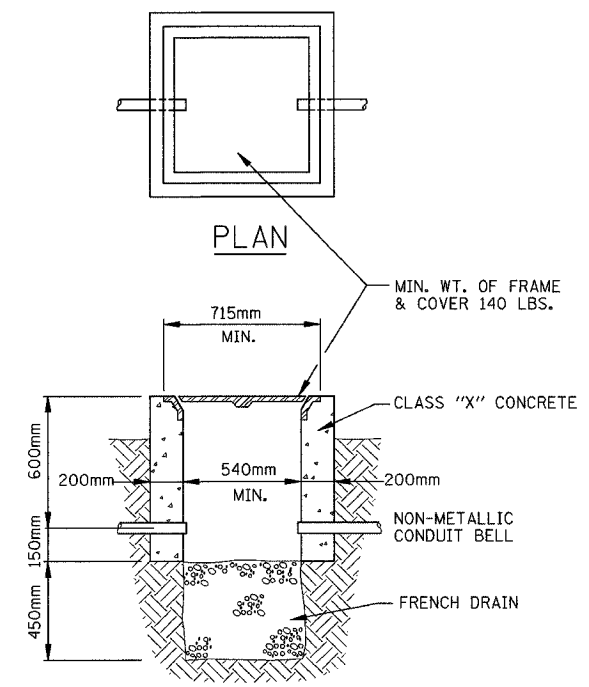
CONCRETE MEDIAN BARRIER  
N.T.S.



CONDUIT BOX ENTRY  
TYPICAL ALL BARRIER BOXES  
N.T.S.



BARRIER WALL JUNCTION BOX -DETAIL 2  
N.T.S.



SECTION  
CONCRETE HANDHOLE

LIGHTING SHEET 43 OF 64

REVISED SHEET

REVISIONS		ILLINOIS DEPARTMENT OF TRANSPORTATION
NAME	DATE	
ADDENDUM #1	MAY 27 2005	MISCELLANEOUS LIGHTING DETAILS

**ab** alfred benesch & company  
CONSULTING ENGINEERS  
205 NORTH MICHIGAN AVENUE, CHICAGO, ILLINOIS 60601

DATE: 11/12/04  
DRAWN BY JSS/MMK  
CHECKED BY MKR

ms:pro [357 3] LIGHTING 4-Contract 10/11/00/mhdel3.dgn  
11/12/04 PM  
4/21/2005