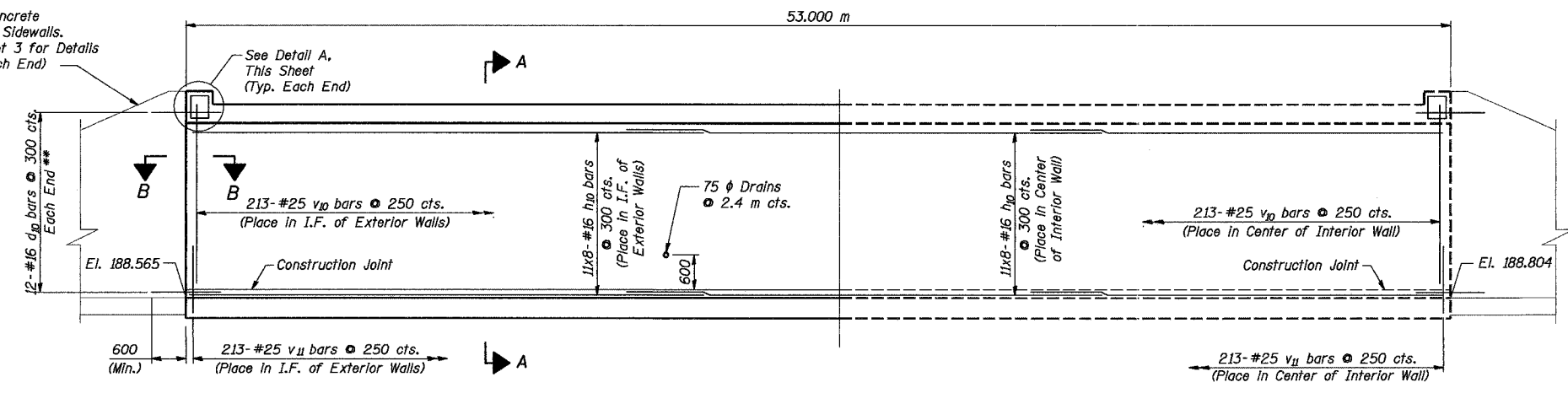


ROUTE NO.	SECT.	COUNTY	SHEET NO.	TOTAL SHEETS
F.A.I. 74	(72-7) R-3	PEORIA	547	1360
FED. ROAD DIST. NO. 7	ILLINOIS	FED. AID PROJECT	CONTRACT NO. 68200	

Date: 11/22/2004 Time: 11:21:22 AM

Filename: P:\643996\structural\072-2030-culvert\sheet\Tracings\RE0002-1A0722030.dgn

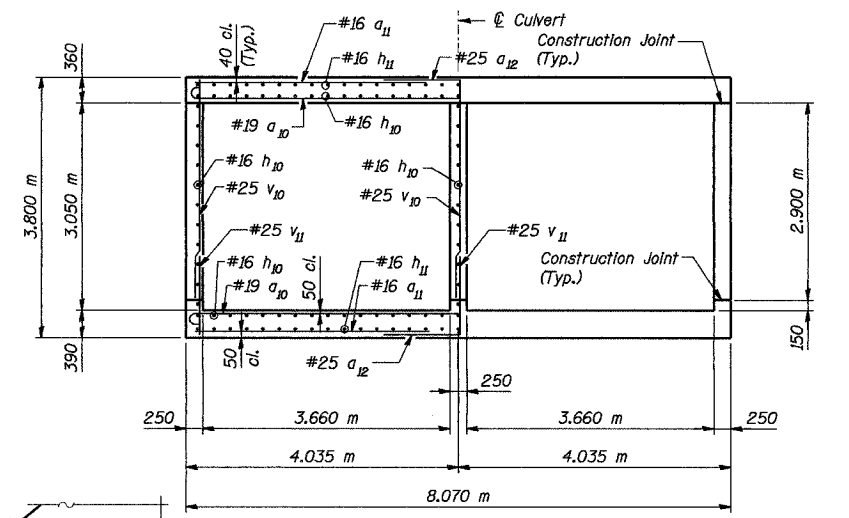
C.I.P. Concrete Apron & Sidewalls. See Sheet 3 for Details (Typ. Each End)



EXTERIOR WALL REINFORCEMENT

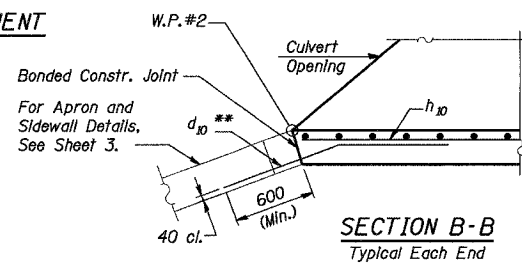
INTERIOR WALL REINFORCEMENT

LONGITUDINAL SECTION

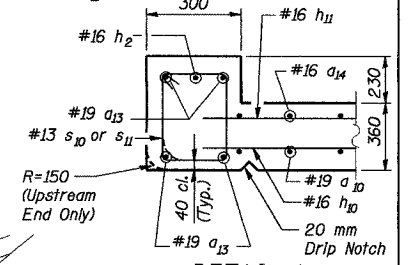


SECTION A-A

Reinforcement symmetrical about \bar{C} Culvert



SECTION B-B
Typical Each End

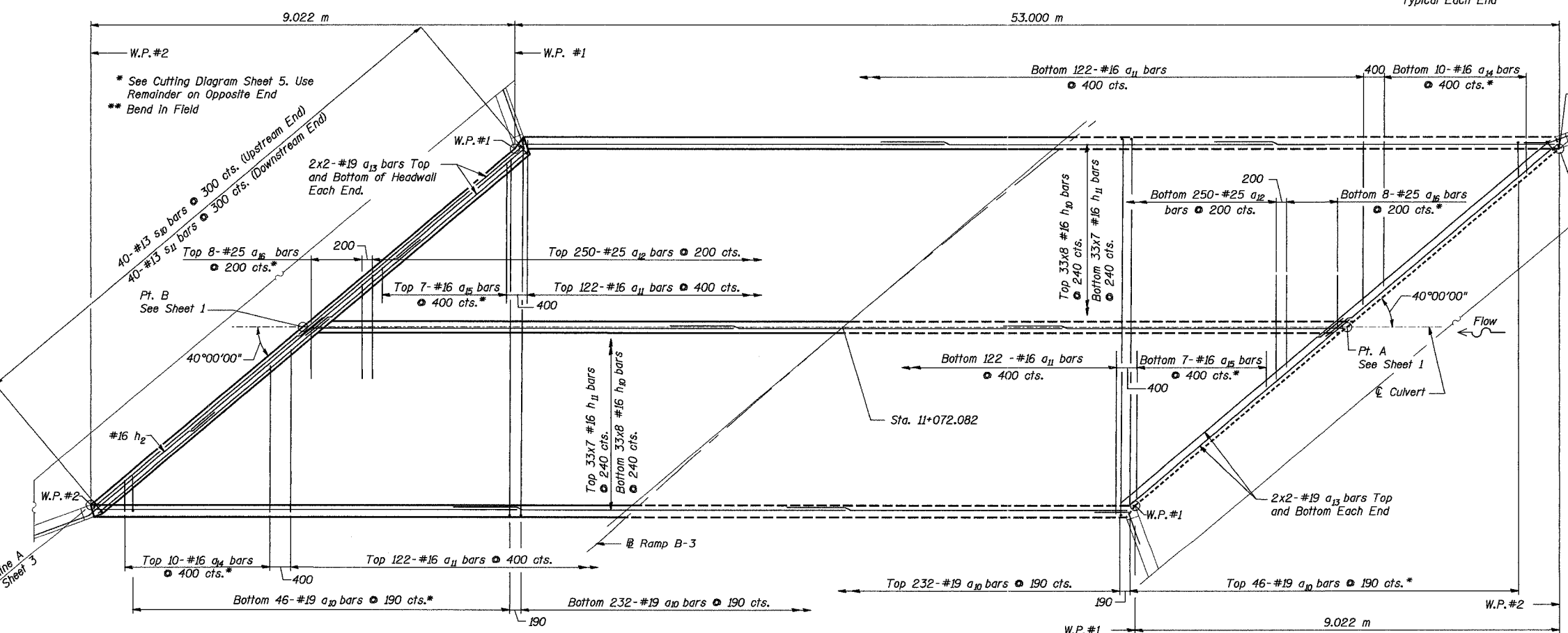


DETAIL A
Dimensions Perp. to Headwall

MIN. BAR LAP

- #16 Bar - 550
- #19 Bar - 670
- I.F. = Inside Face
- O.F. = Outside Face

Notes:
 Bars indicated thus 20x3-#16 etc. indicates 20 lines of bars with 3 lengths per line.
 For Bar Details and Bill of Material see Sheet 5.
 All Elevations are measured along \bar{C} Culvert.
 All Dimensions are in millimeters (mm) except as noted.



PLAN - TOP SLAB REINFORCEMENT

PLAN - BOTTOM SLAB REINFORCEMENT

REVISION	DATE	DESCRIPTION
STATE OF ILLINOIS DEPARTMENT OF TRANSPORTATION		
CULVERT PLAN AND SECTION II		
RAMP B-3 OVER DRY RUN CREEK F.A.I. ROUTE 74 SEC. (72-7)R-3 PEORIA COUNTY STA. 11+072.082 (RAMP B-3) STRUCTURE NUMBER 072-2030		
PARSONS TRANSPORTATION GROUP CHICAGO, ILLINOIS		
DRAWING NO. 4	SCALE N.T.S.	DATE 8/31/04
		SHEET NO. 4

Designed by: WEE
 Checked by: RW
 Drafted by: RKS
 Checked by: RW