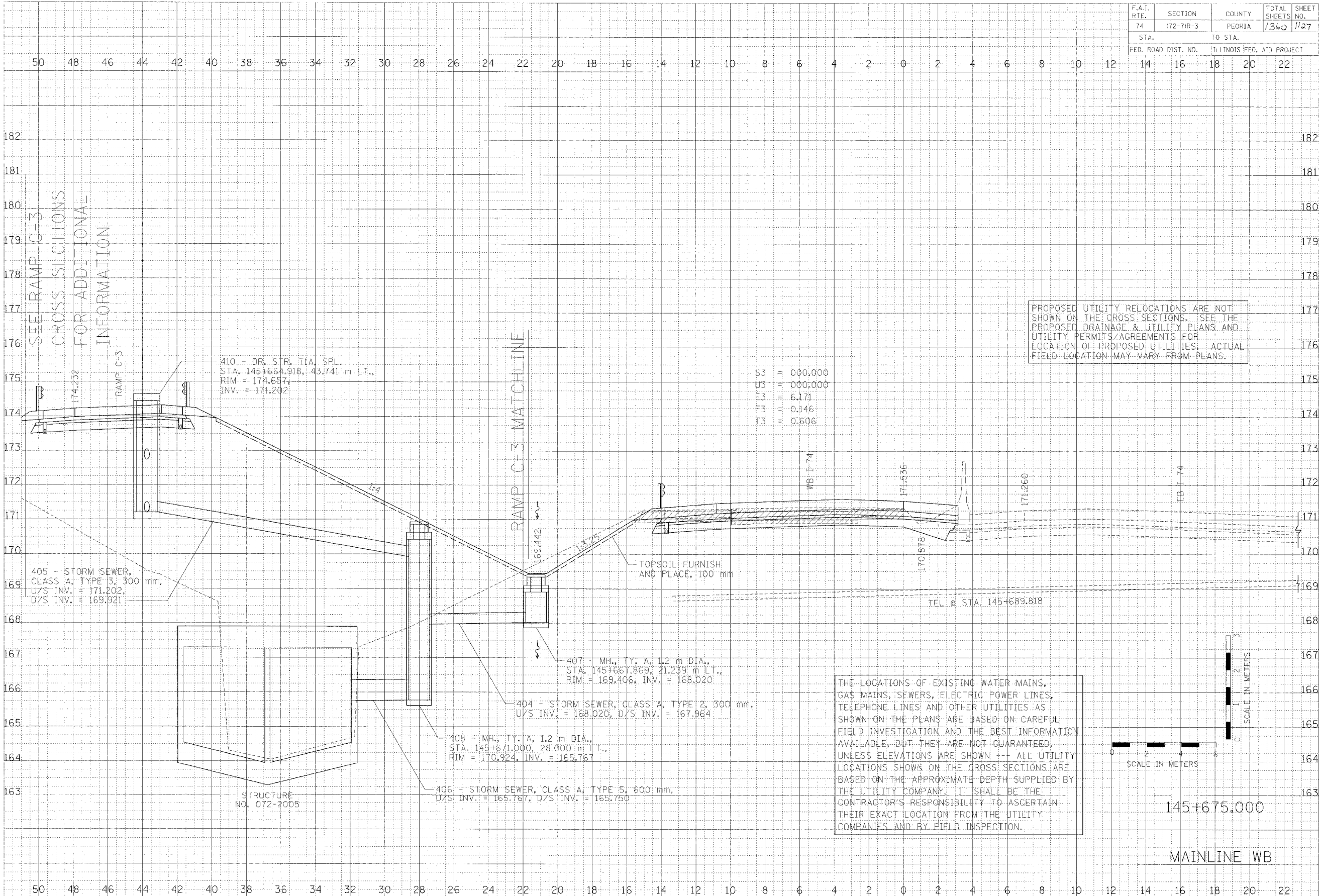


F.A.I. RTE.	SECTION	COUNTY	TOTAL SHEETS	SHEET NO.
74	172-71R-3	PEORIA	1360	1127
STA. 145+689.818		TO STA. 145+717.000		
FED. ROAD DIST. NO.		ILLINOIS FED. AID PROJECT		

FINAL SURVEYED
 DATE: 11/11/10
 NOTE BOOK: 100-100-100
 AREA: 100-100-100

CLARK ENGINEERS, INC.

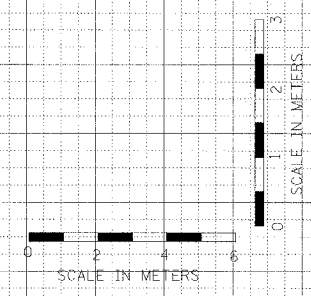
DATE: 11/11/10
 BY: [Signature]
 CHECKED: [Signature]
 APPROVED: [Signature]



PROPOSED UTILITY RELOCATIONS ARE NOT SHOWN ON THE CROSS SECTIONS. SEE THE PROPOSED DRAINAGE & UTILITY PLANS AND UTILITY PERMITS/AGREEMENTS FOR LOCATION OF PROPOSED UTILITIES. ACTUAL FIELD LOCATION MAY VARY FROM PLANS.

S3	=	000.000
U3	=	000.000
F3	=	6.171
F3	=	0.146
T3	=	0.606

THE LOCATIONS OF EXISTING WATER MAINS, GAS MAINS, SEWERS, ELECTRIC POWER LINES, TELEPHONE LINES AND OTHER UTILITIES AS SHOWN ON THE PLANS ARE BASED ON CAREFUL FIELD INVESTIGATION AND THE BEST INFORMATION AVAILABLE, BUT THEY ARE NOT GUARANTEED, UNLESS ELEVATIONS ARE SHOWN -- ALL UTILITY LOCATIONS SHOWN ON THE CROSS SECTIONS ARE BASED ON THE APPROXIMATE DEPTH SUPPLIED BY THE UTILITY COMPANY. IT SHALL BE THE CONTRACTOR'S RESPONSIBILITY TO ASCERTAIN THEIR EXACT LOCATION FROM THE UTILITY COMPANIES AND BY FIELD INSPECTION.



145+675.000

MAINLINE WB