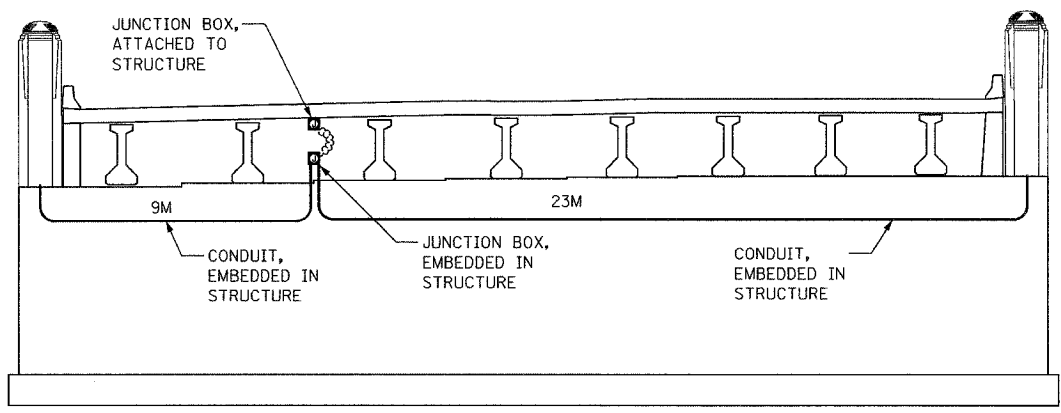
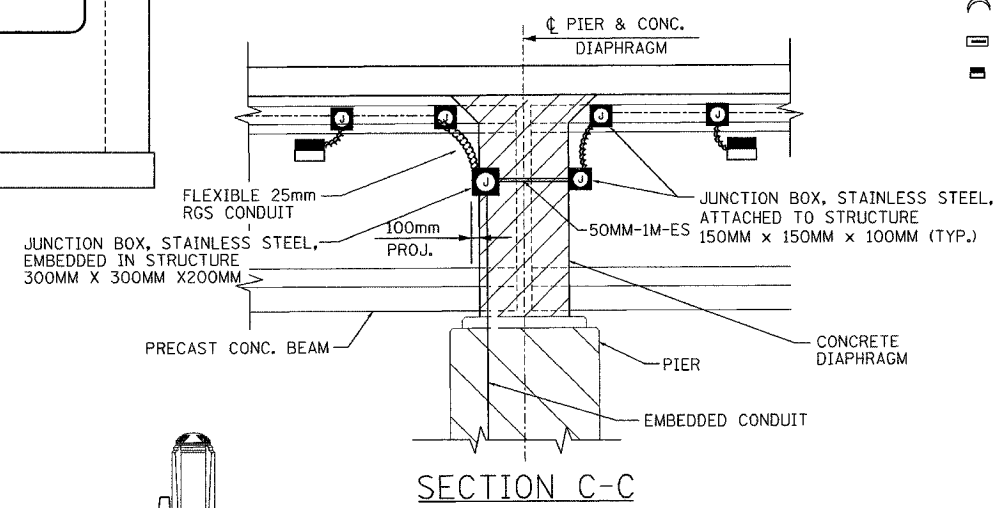
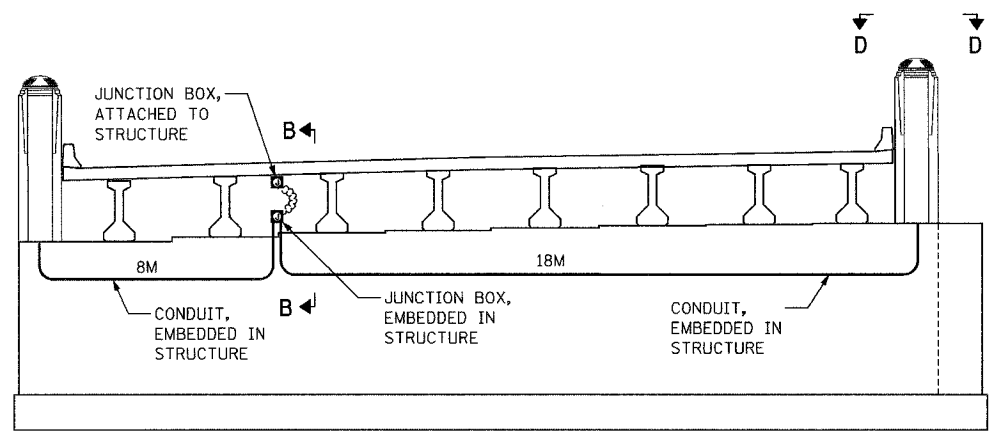
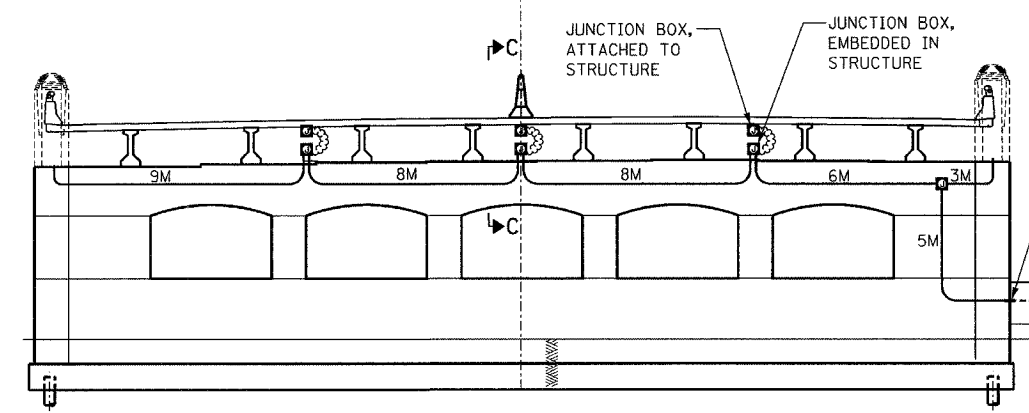
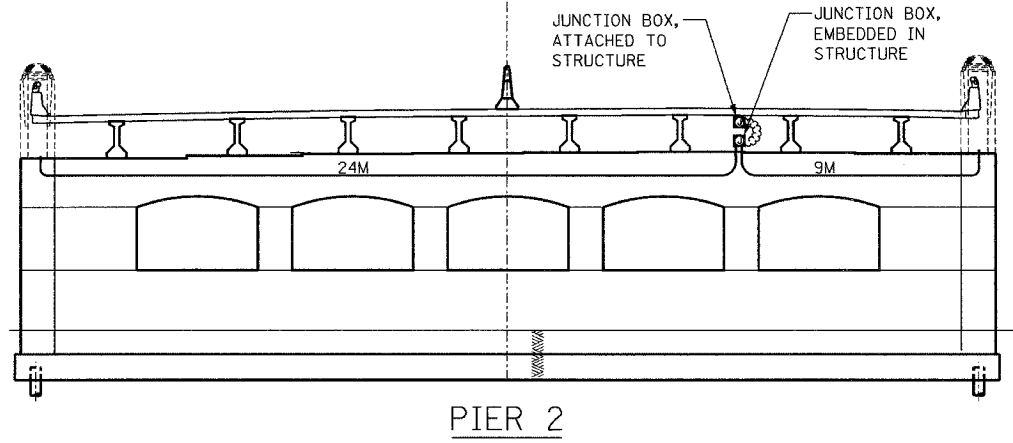


F.A.I. RTE.	SECTION	COUNTY	TOTAL SHEETS	SHEET NO.
74	(72-7R-3)	PEORIA	1360	1369
STA.		TO STA.		
FED. ROAD DIST. NO.	ILLINOIS	FED. AID PROJECT		

CONTRACT NO. 68200



LEGEND

- ⊕ PROPOSED JUNCTION BOX
- PROPOSED ATTACHED CONDUIT, 25mm DIA., GALVANIZED STEEL
- PROPOSED EMBEDDED CONDUIT, 50mm DIA. PVC SCHEDULE 40
- ⤵ PROPOSED LIQUID-TIGHT FLEXIBLE CONDUIT, 25mm
- ▭ EMBEDDED CONCRETE INSERT (SEE DETAIL SHEET #46)
- UNDERPASS LUMINAIRE, HPSV, 100 WATT, 240 VOLT (SEE DETAIL SHEET #46).

NOTES:

1. ALL EMBEDDED CONDUIT SHALL BE 50mm, PVC - SCH. 40, UNLESS OTHERWISE INDICATED.
2. ALL JUNCTION BOXES ATTACHED TO STRUCTURE SHALL BE STAINLESS STEEL, 150mmx150mmx100mm, UNLESS OTHERWISE NOTED.
3. ALL JUNCTION BOXES EMBEDDED IN STRUCTURE SHALL BE STAINLESS STEEL, 300mmx300mmx200mm, UNLESS OTHERWISE NOTED.
4. ALL CONDUIT BENDS AND RADII SHALL BE IN ACCORDANCE WITH IDOT STANDARD SPECIFICATIONS.
5. FOR SECTION C-C AND D-D, SEE SHEET 24
6. FOR QUANTITIES, SEE SHEET 24

LIGHTING SHEET 25 OF 64

REVISIONS	
NAME	DATE

ILLINOIS DEPARTMENT OF TRANSPORTATION

BRIDGE LIGHTING PLAN
RAMPS B-1 AND B-4 OVER I-74

DATE: 11/12/04

DRAWN BY DJK
CHECKED BY MKR

ab alfred benesch & company
CONSULTING ENGINEERS
205 NORTH MICHIGAN AVENUE, CHICAGO, ILLINOIS 60601

m:\proj\3573\lighting\74\contract\10\11\002-7a2br_bldg

4:13:50 PM

11/12/2004