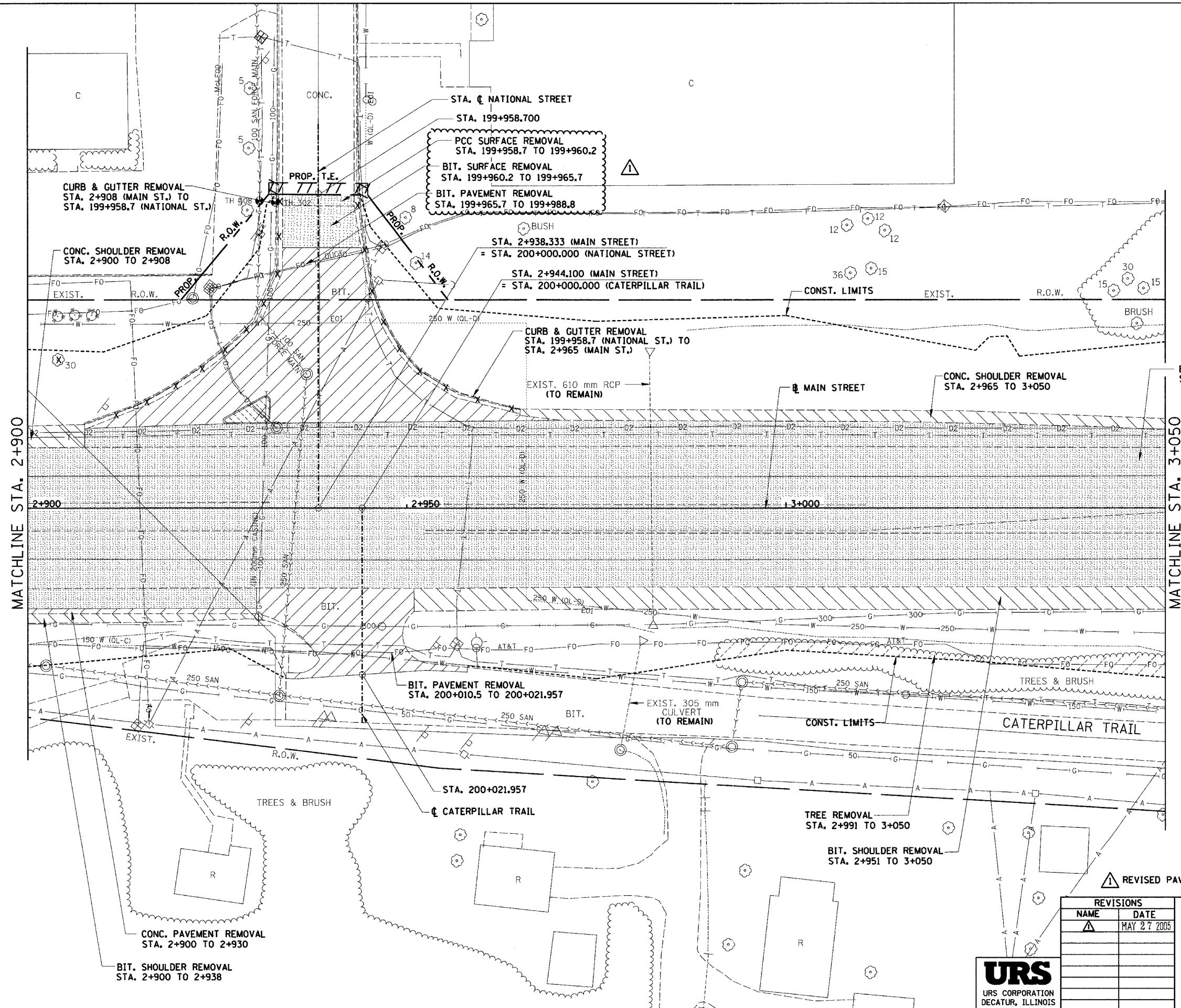
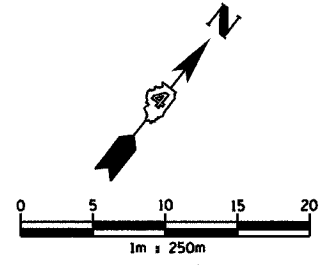


\\p01115-5000.dgn 4/28/2005 7:46:35 AM

F.A.I. RTE.	SECTION	COUNTY	TOTAL SHEETS	SHEET NO.
74	*	TAZEWELL	136	27
STA. 2+900.000		TO STA. 3+050.000		
FED. ROAD DIST. NO.		ILLINOIS FED. AID PROJECT		

*190-IDR-290(13,14,14-IDR-1



REMOVAL LEGEND

- PAVEMENT REMOVAL
 - SHOULDER REMOVAL
 - DRIVEWAY PAVEMENT REMOVAL
 - SIDEWALK REMOVAL
 - CURB & GUTTER REMOVAL
 - GUARDRAIL REMOVAL
 - BITUMINOUS SURFACE REMOVAL
 - BITUMINOUS TAPER (FOR BUTT JOINTS)
 - MEDIAN/ISLAND REMOVAL
 - TREE REMOVAL (ha)
- REVISED PAVEMENT
 TREE REMOVAL

REVISIONS	
NAME	DATE
	MAY 27 2005



ILLINOIS DEPARTMENT OF TRANSPORTATION

EXISTING ROADWAY PLAN

ILL. 116 - U.S. 150 - MAIN ST.

STA. 2+900 TO STA. 3+050

DRAWN BY SRS

CHECKED BY JJM

DATE 12-20-04