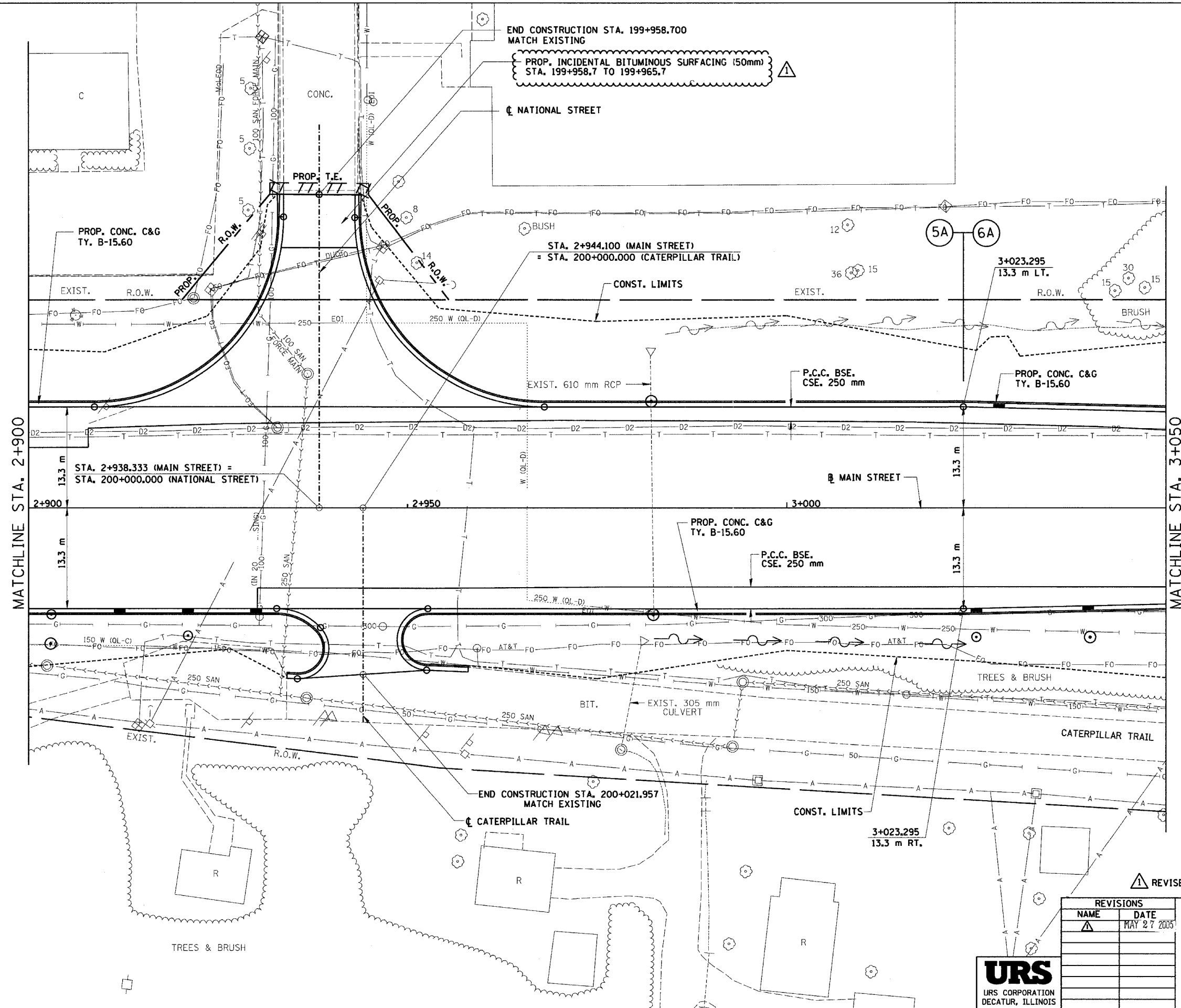
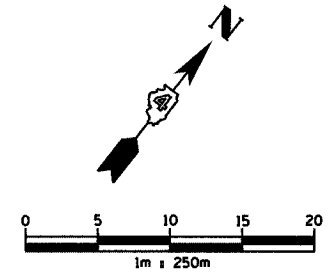


D:\base2\roadway\116-15m.dwg 4/28/2005 5:00:00 AM

F.A.I. RTE.	SECTION	COUNTY	TOTAL SHEETS	SHEET NO.
74	*	TAZEWELL	1366	228
STA. 2+900.000		TO STA. 3+050.000		
FED. ROAD DIST. NO.		ILLINOIS FED. AID PROJECT		

\* (90-DR-2;90(13,14,14-DR-1)



END CONSTRUCTION STA. 199+958.700  
MATCH EXISTING  
PROP. INCIDENTAL BITUMINOUS SURFACING (50mm)  
STA. 199+958.7 TO 199+965.7

PROP. CONC. C&G  
TY. B-15.60

STA. 2+944.100 (MAIN STREET)  
= STA. 200+000.000 (CATERPILLAR TRAIL)

3+023.295  
13.3 m LT.

STA. 2+938.333 (MAIN STREET) =  
STA. 200+000.000 (NATIONAL STREET)

PROP. CONC. C&G  
TY. B-15.60

P.C.C. BSE.  
CSE. 250 mm

3+023.295  
13.3 m RT.

END CONSTRUCTION STA. 200+021.957  
MATCH EXISTING

REVISIED PAVEMENT

REVISIONS	
NAME	DATE
Δ	MAY 27 2005

**URS**  
URS CORPORATION  
DECATUR, ILLINOIS

ILLINOIS DEPARTMENT OF TRANSPORTATION  
PROPOSED ROADWAY PLAN  
ILL. 116 - U.S. 150 - MAIN ST.  
STA. 2+900 TO STA. 3+050  
DRAWN BY SRS  
CHECKED BY JJM  
DATE 12-20-04