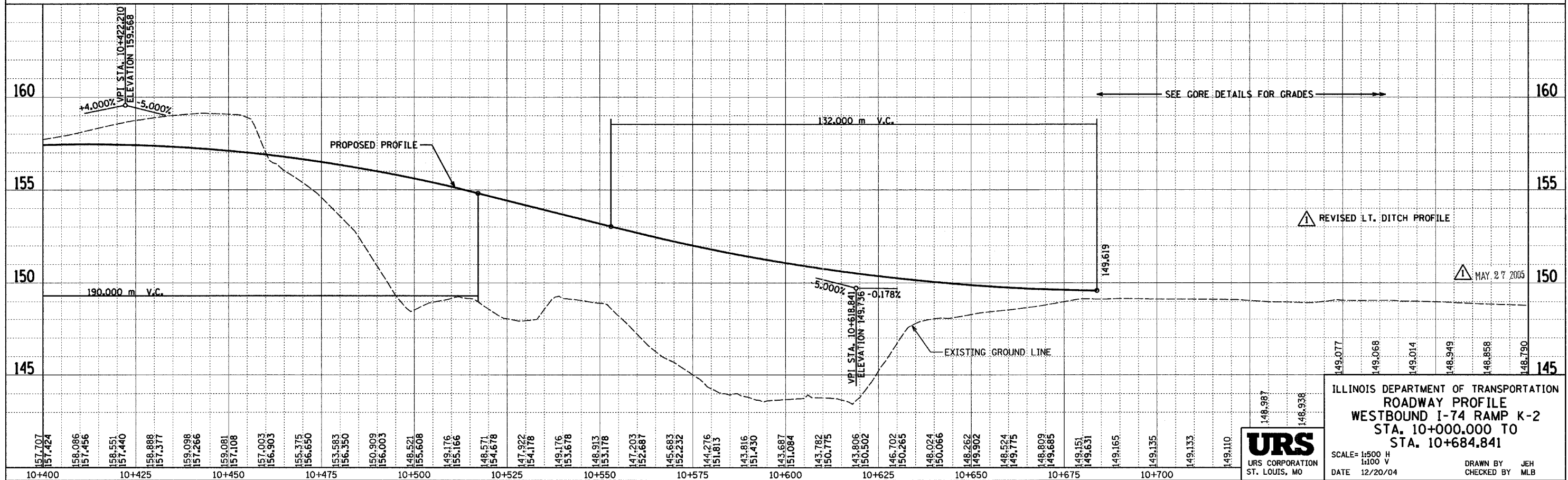
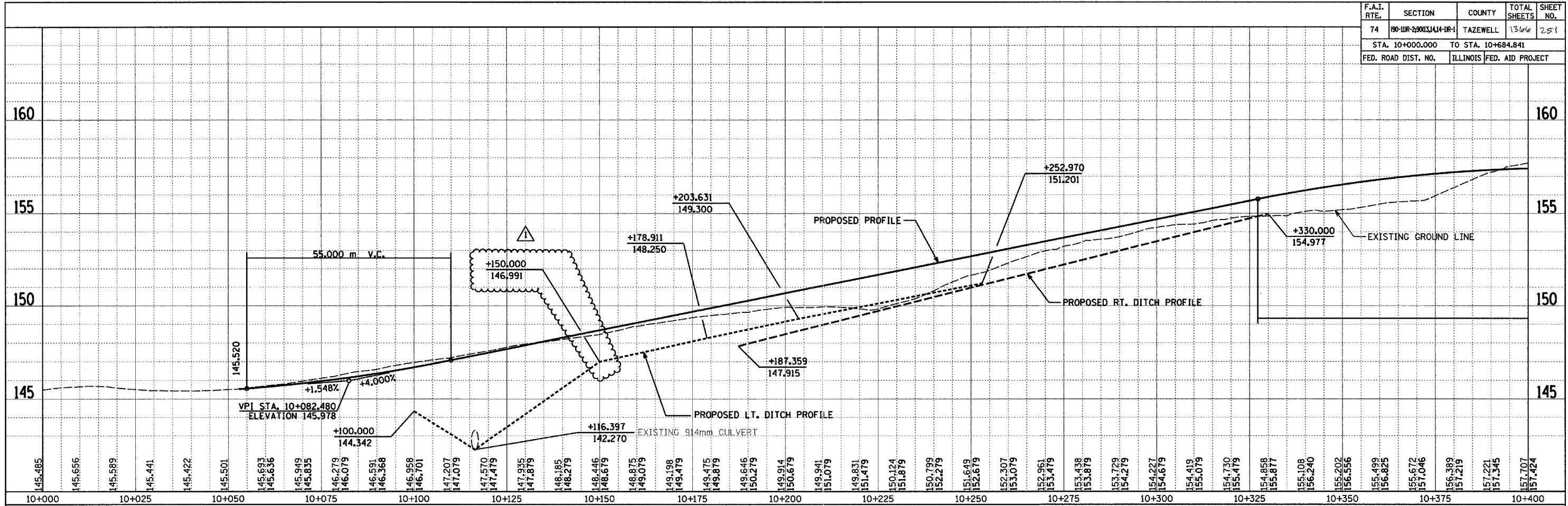


F.A.I. RTE.	SECTION	COUNTY	TOTAL SHEETS	SHEET NO.
74	90-IR-2903(4)4-IR-1	TAZEWELL	13/66	251
STA. 10+000.000		TO STA. 10+684.841		
FED. ROAD DIST. NO.		ILLINOIS	FED. AID PROJECT	



ILLINOIS DEPARTMENT OF TRANSPORTATION
ROADWAY PROFILE
WESTBOUND I-74 RAMP K-2
STA. 10+000.000 TO
STA. 10+684.841

SCALE= 1:500 H
1:100 V

DATE 12/20/04

DRAWN BY JEH
CHECKED BY MLB

I:\Projects\105-584-2.dgn 4/29/2005 7:17:36 AM