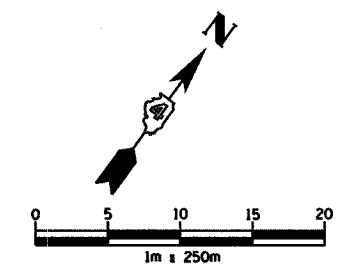


NY 10:10:11 5002/175 050 05-001175 SURF CA

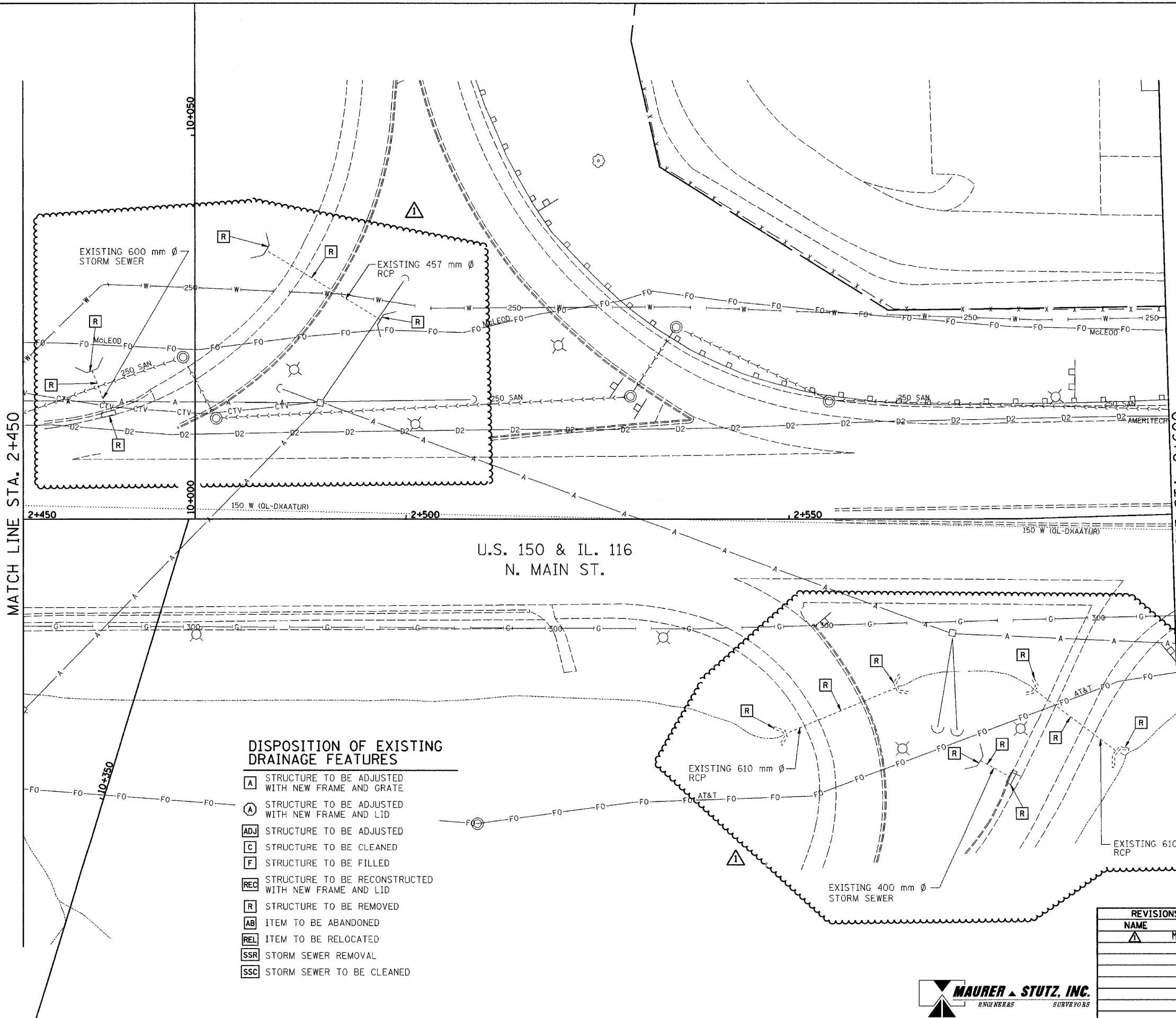
F.A.I. RTE.	SECTION	COUNTY	TOTAL SHEETS NO.
74	*	TAZEWELL	1360 273
STA. 2+450.000 TO STA. 2+600.000			
FED. ROAD DIST. NO. 4		ILLINOIS FED. AID PROJECT	

• (90-111R-2)90(13,14,14-1)R-1



**EXISTING DRAINAGE AND UTILITY LEGEND**

- A — OVERHEAD ELECTRIC
- S — STORM SEWER
- SS — SANITARY SEWER
- - - - - CULVERT PIPE
- T — TRENCH DRAIN
- U — UNDERGROUND TELEPHONE
- FO — UNDERGROUND FIBER OPTIC
- O — UNDERGROUND COMMUNICATIONS DUCT
- W — UNDERGROUND WATER MAIN
- G — UNDERGROUND GAS MAIN
- H — HEADWALL
- I — INLET
- △ CONC END SECTION
- UTILITY MANHOLE
- ELECTRIC/TELEPHONE SPLICE BOX
- ⊕ TRAFFIC SIGNAL HANDHOLE
- ⊙ POWER POLE
- ⊕ TELEPHONE POLE
- ⊕ HIGH MAST LIGHT
- ⊕ ABOVE GROUND TRANSFORMER
- ⊕ WATER VALVE OR UTIL. BOX
- ⊕ FIRE HYDRANT
- ⊕ RAILROAD SWITCH
- ⊕ RAILROAD SIGNAL
- ⊕ FIBER OPTIC JUNCTION BOX



**DISPOSITION OF EXISTING DRAINAGE FEATURES**

- A** STRUCTURE TO BE ADJUSTED WITH NEW FRAME AND GRATE
- A** STRUCTURE TO BE ADJUSTED WITH NEW FRAME AND LID
- ADJ** STRUCTURE TO BE ADJUSTED
- C** STRUCTURE TO BE CLEANED
- F** STRUCTURE TO BE FILLED
- REC** STRUCTURE TO BE RECONSTRUCTED WITH NEW FRAME AND LID
- R** STRUCTURE TO BE REMOVED
- AB** ITEM TO BE ABANDONED
- REL** ITEM TO BE RELOCATED
- SSR** STORM SEWER REMOVAL
- SSC** STORM SEWER TO BE CLEANED

△ ADDED **R**'S TO SHEET (SEE SCHEDULE SHEET 112 FOR REMOVAL ITEMS)

**EXISTING CONDITIONS**

REVISIONS	
NAME	DATE
△	MAY 27 2005

ILLINOIS DEPARTMENT OF TRANSPORTATION  
**DRAINAGE AND UTILITY PLAN**  
**MAIN STREET**  
 STA 2+450 TO 2+600



DATE 12/20/04  
 DRAWN BY JAM  
 CHECKED BY MJS