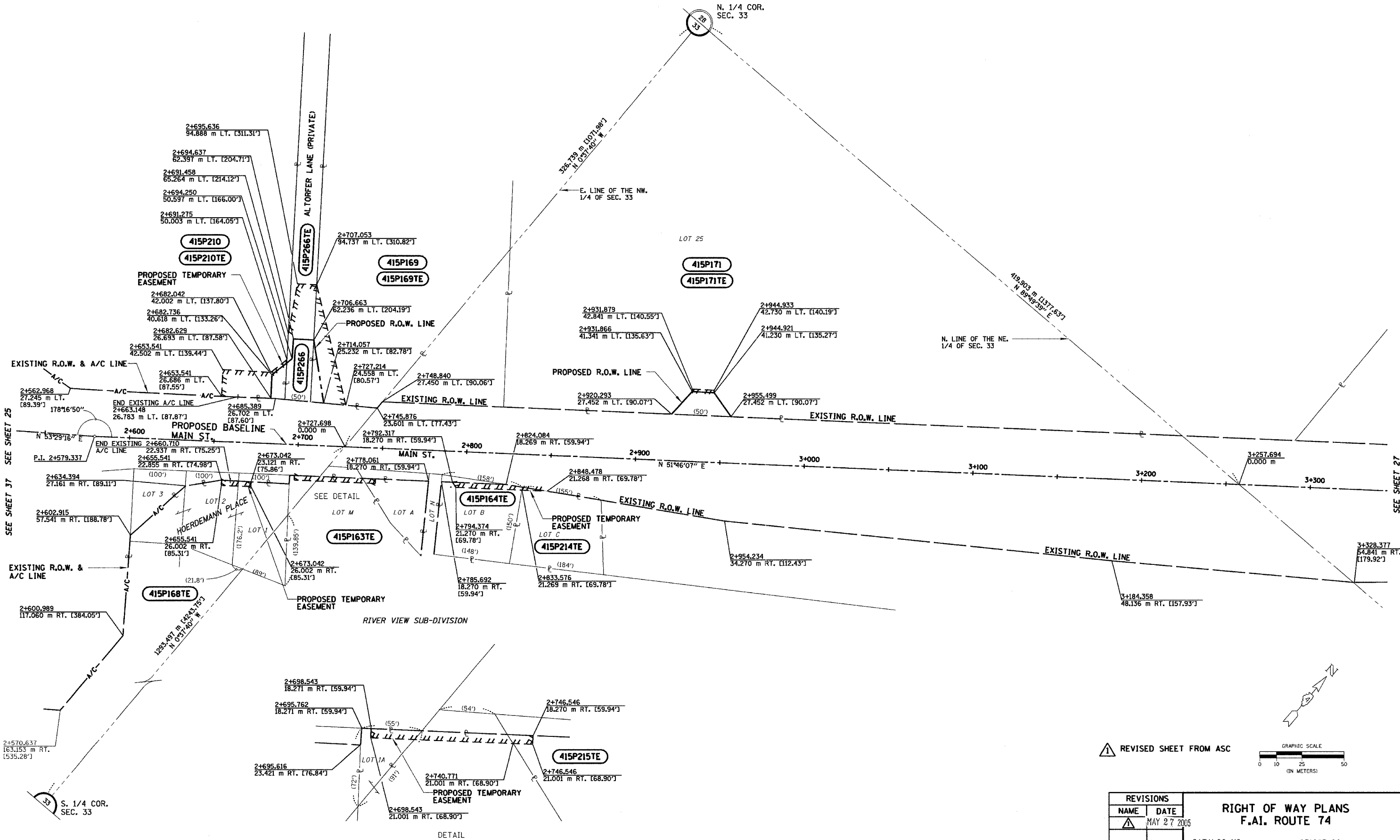


TOWNSHIP 26 NORTH, RANGE 4 WEST, 3rd P.M.

TOTAL SHEETS	SHEET NO.
1366	303

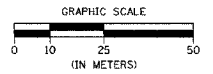


NOTES:
 SURVEYED IN METRIC. DIMENSIONS SHOWN IN ENGLISH HAVE BEEN CONVERTED (1 METER = 3.28083333'). METRIC DIMENSIONS AND AREAS SHALL CONTROL.
 () ENGLISH EQUIVALENT
 () RECORD DATA

NOTE: PROJECT DATUM IS NAD83 ILLINOIS STATE PLANE COORDINATES, WEST ZONE. THE PROJECT COMBINATION FACTOR IS 0.999941679. ALL LAND ACQUISITION DOCUMENTS WERE PROJECTED TO "GROUND" COORDINATES. FINAL STAKED ALIGNMENTS WERE PROJECTED TO "GROUND" COORDINATES. ALL CONSTRUCTION DOCUMENTS WERE DEVELOPED USING "GRID" COORDINATES.

DETAIL SCALE 1 : 500

REVISSED SHEET FROM ASC



REVISIONS	
NAME	DATE
▲	MAY 27 2005

RIGHT OF WAY PLANS F.A.I. ROUTE 74

CATALOG NO. 031087-00
 SECTION (72-8)R-1,72(9.9-1)R
 STATION 2+550 TO 3+300
 JOB. NO. R-94-015-98 COUNTY TAZEWELL
 SCALE 1 : 1000 SHEET 26 OF

REVISED: 7/28/2004