

STATE OF ILLINOIS
DEPARTMENT OF TRANSPORTATION

ROUTE NO.	SECTION	COUNTY	TOTAL SHEETS	SHEET	SHEET NO. 1
		Tazewell		516A	2 SHEETS
FED. ROAD DIST. NO. 7	ILLINOIS	FED. AID PROJECT	Contract Number: ---		

GENERAL NOTES

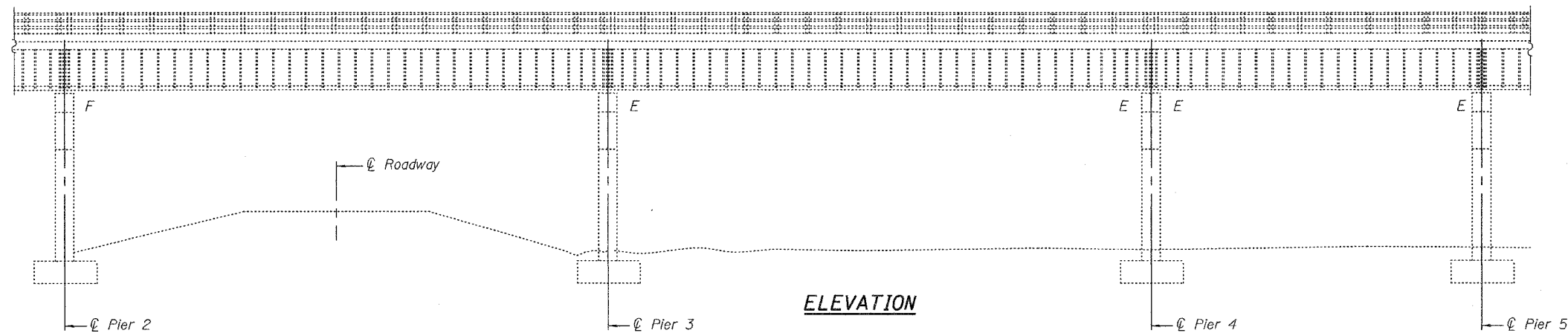
All structural steel shall conform to AASHTO Classification M-270 Gr. 36, unless otherwise noted.

Fasteners shall be high strength bolts. Bolts 7/8"φ, open holes 15/16"φ, unless otherwise noted.

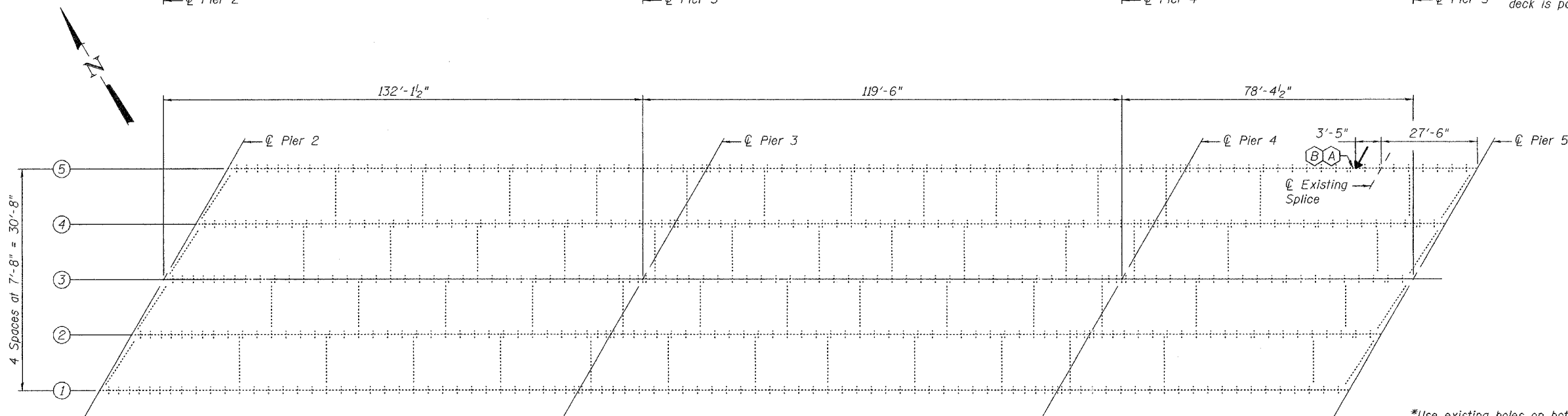
Plan dimensions and details relative to existing structure have been taken from existing plans and are subject to nominal construction variations. It shall be the Contractor's responsibility to verify such dimensions and details in the field and make necessary approved adjustments prior to construction or ordering of materials. Such variations shall not be cause for additional compensation for a change in the scope of the work, however, the Contractor will be paid for the quantity actually furnished at the unit price bid for the work.

Existing structural steel that will be in contact with new structural steel shall be cleaned and painted prior to erection as required by the Special Provision "Cleaning and Painting Contact Surface Areas of Existing Steel Structures" and "Cleaning and Painting New Metal Structures". The color of the acrylic finish coat shall be Interstate Green, Munsell No. 7.5G 4/8. Cost included with Beam Straightening.

Beam straightening operations shall be done before deck removal. Steel repair operations shall be done after deck removal and before new deck is poured.



ELEVATION

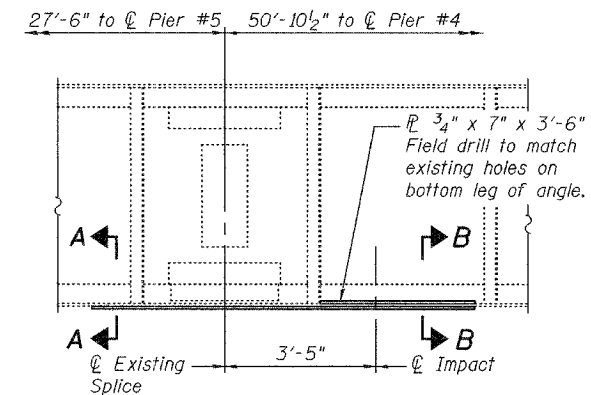


PLAN

Impact
Line →

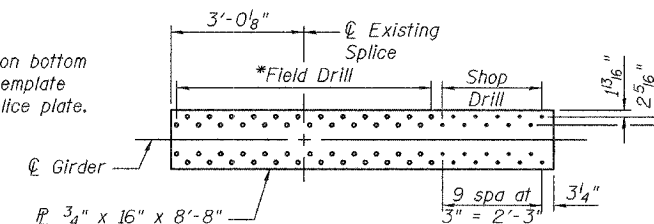
(A) Location of Beam Strengthening see details this sheet.

(B) Location of Beam Straightening see details sheet 2 of 2.



FASCIA GIRDER ELEVATION
(Looking Southwest)

*Use existing holes on bottom leg of angles as a template for holes on new splice plate.

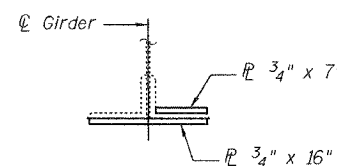


BOTTOM SPLICE PLATE DETAIL

Existing R 16 1/2" x 3/8" x 6'-0 1/4" to be removed cost included with Structural Steel Repair.

All existing rivets in bottom flange of Girder at splice location are to be replaced with H.S. Bolts. Cost included with Structural Steel Repair.

**SECTION A-A
SHOWING REMOVAL**



**SECTION B-B
SHOWING STRENGTHENING**

TOTAL BILL OF MATERIAL

ITEM	UNIT	QUANTITY
Structural Steel Repair	Pound	470
Beam Straightening	L.S.	1

**PLAN ELEVATION AND
STRENGTHENING DETAILS**
F.A.I. RT. 74
TAZEWELL COUNTY
SN 090-0009

DESIGNED	Victor H. Voltz
CHECKED	S.J.B.
DRAWN	[Signature]
CHECKED	VHV / S.J.B.

EXAMINED	John A. Morris	April 28, 2005
PASSED	Robert E. Adams	



Expires: November 30, 2006