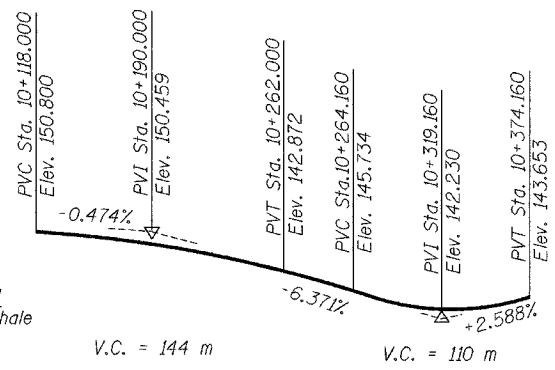
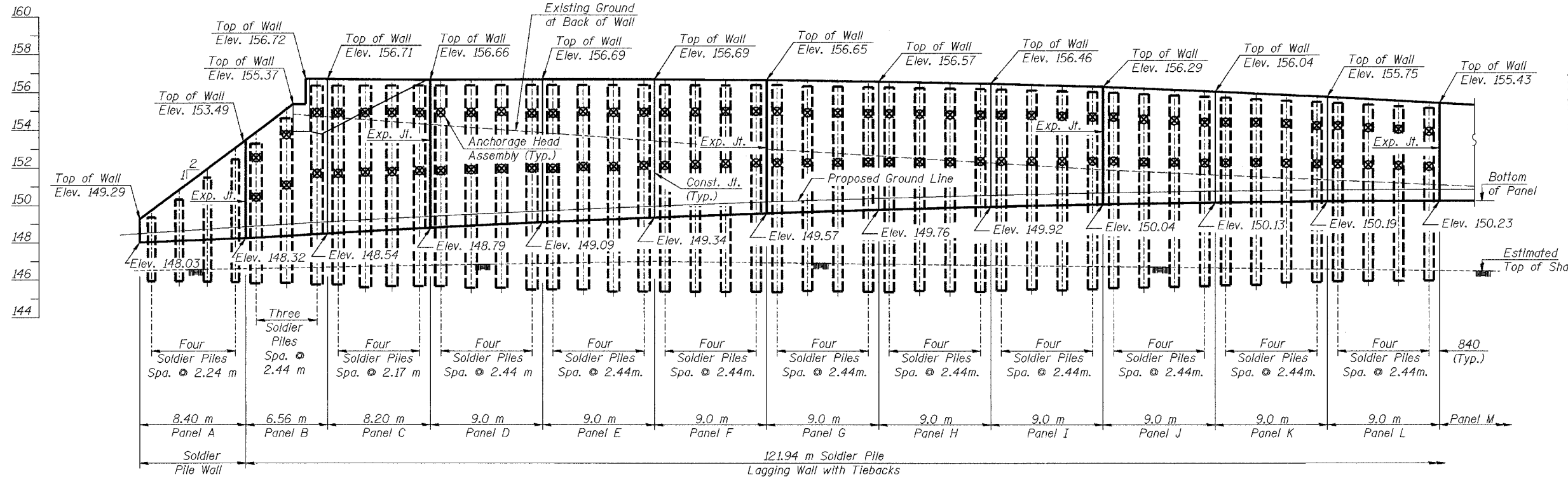


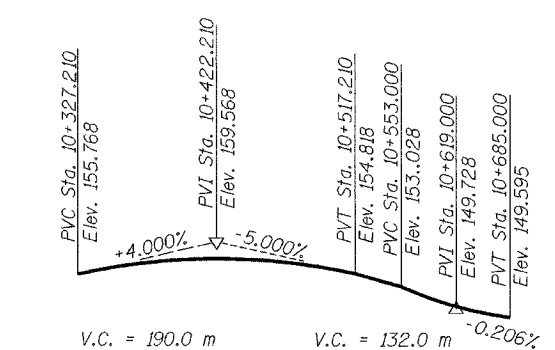
Bench Mark: Chisel '□' S.E. Corner Camp St., bridge parapet concrete wall state point TH 8905. Elev. 149.398

ROUTE NO.	SECTION	COUNTY	TOTAL SHEETS	SHEET NO.
FAI 74	*	TAZEWELL	1366	602
SHEET NO. 1				
21 SHEETS				

FED. ROAD DIST. NO. 7 ILLINOIS FED. AID PROJECT  
\*90-11HB-5



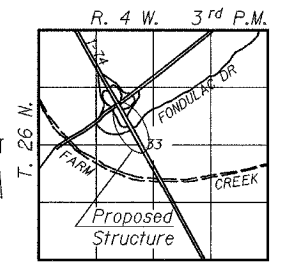
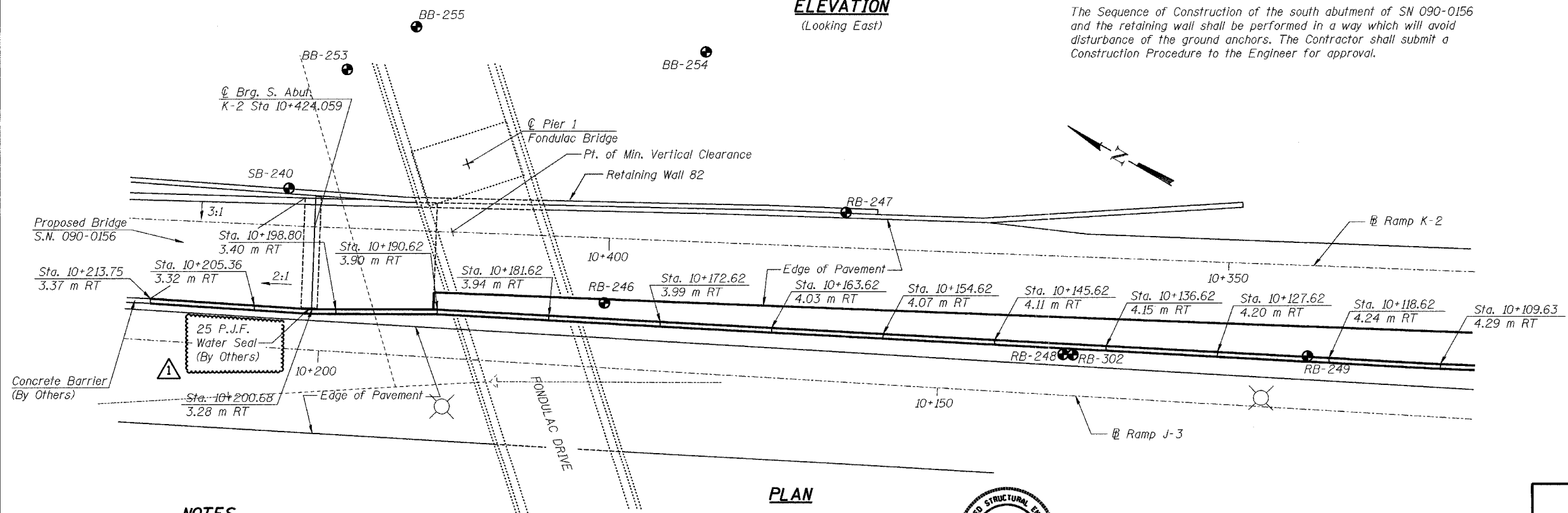
PROFILE GRADE RAMP J-3



PROFILE GRADE RAMP K-2

**ELEVATION**  
(Looking East)

The Sequence of Construction of the south abutment of SN 090-0156 and the retaining wall shall be performed in a way which will avoid disturbance of the ground anchors. The Contractor shall submit a Construction Procedure to the Engineer for approval.



LOCATION SKETCH

**NOTES**

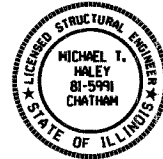
All dimensions are in millimeters (mm) as noted.  
All retaining wall stations/offsets are off J-3 Baseline.

**DESIGN STRESSES**

- $f'_c = 24$  MPa (Concrete)
- $f'_c = 27.5$  MPa (Grout)
- $f_y = 400$  MPa (Reinf.)
- $f_y = 345$  MPa (Soldier Piles) (M270 M Grade 345)
- $f'_s = 1860$  MPa (15mm  $\phi$  Low Lax Strands)
- $f'_{si} = 1395$  MPa (15mm  $\phi$  Low Lax Strands)

**DESIGN SPECIFICATIONS**

1996 AASHTO Specifications with 1997, thru 2000 Interim



Michael T. Haley  
Licensed Structural Engineer  
State of Illinois No. 81-5991

ADDED WATER SEAL NOTE

REVISIONS	
NAME	DATE
▲	MAY 27, 2005

**LIN ENGINEERING, LTD.**  
200 W. Chestnut  
Chatham, Illinois 62629  
TEL: (618) 423-4165 FAX: (618) 423-4166  
Designed By: MTH Checked By: ERG Drawn By: JMD  
Date: 06/02 File: rp0401-56090851E.dgn

ILLINOIS DEPARTMENT OF TRANSPORTATION  
**GENERAL PLAN AND ELEVATION**  
RETAINING WALL 81  
F.A.I. RTE. 74 (I-74)  
SECTION 90-11HB-5  
TAZEWELL COUNTY  
RAMP J-3 STATION 10+037 TO 10+213  
S.N. 090-8512