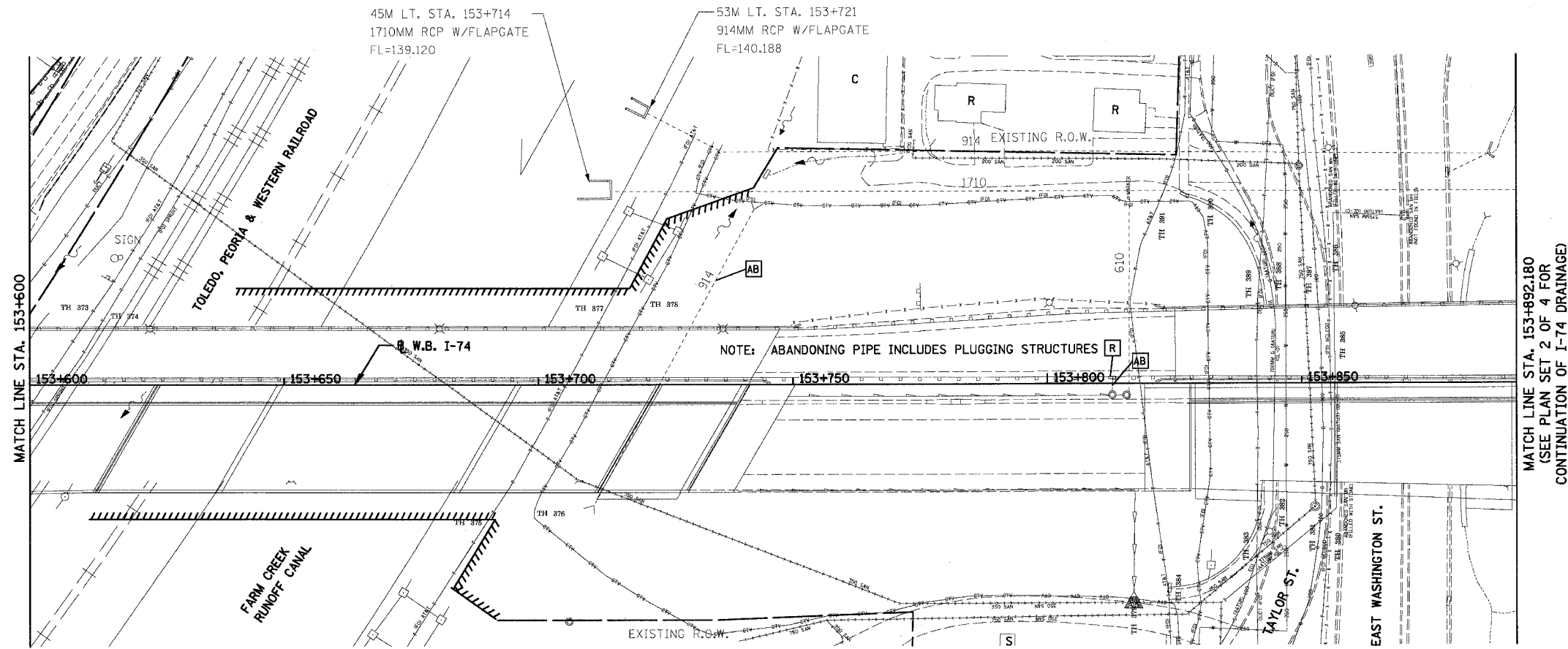
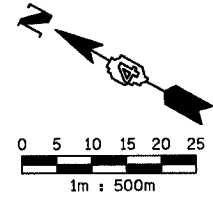


F.A.I. RTE.	SECTION	COUNTY	TOTAL SHEETS	SHEET NO.
74	(90-1)R-2; 90(13,14,14-1)R-1	TAZEWELL	1366	266
STA. 153+600		TO STA. 153+892.180		
FED. ROAD DIST. NO. 4		ILLINOIS FED. AID PROJECT		



DRAINAGE LEGEND

○	CATCH BASIN	[R]	STRUCTURE TO BE REMOVED
—	INLET	[SSR]	STORM SEWER REMOVAL
●	MANHOLE	[AB]	ITEM TO BE ABANDONED
◁	CULVERT END SECTION	—	HEADWALL
~>	DITCH FLOW	—	STORM SEWER
		---	CULVERT LINE
			REMOVAL ITEM

EXISTING DRAINAGE SHEET 5 OF 5

REVISIONS	
NAME	DATE

ILLINOIS DEPARTMENT OF TRANSPORTATION
 F.A.I. ROUTE 74 (I-74)
DRAINAGE AND UTILITY PLAN
 STA 153+600 TO STA 153+892.180 W.B. I-74
 DATE 12-20-2004
 DRAWN BY RTG
 CHECKED BY RTG

