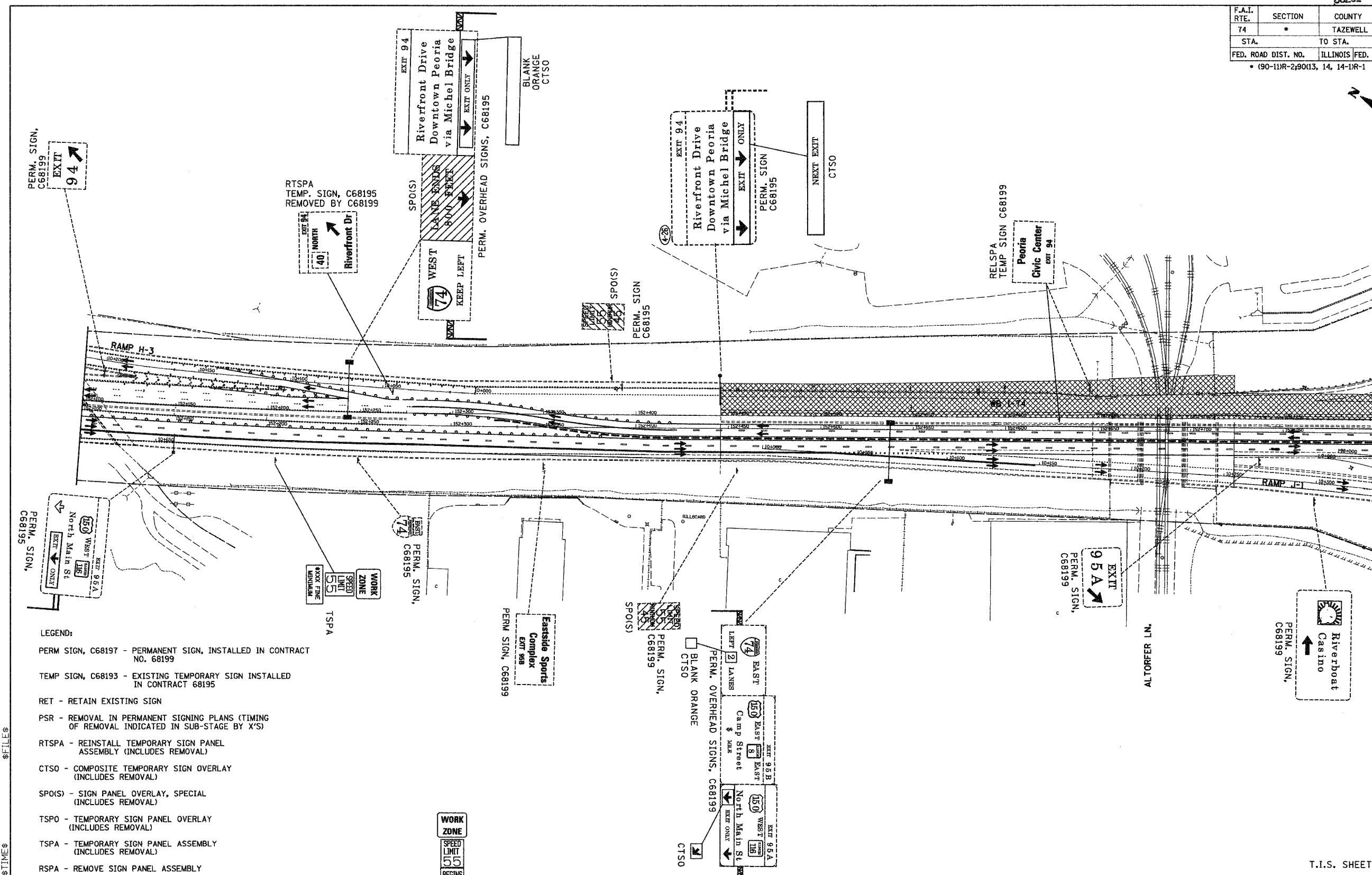


F.A.I. RTE.	SECTION	COUNTY	TOTAL SHEETS	SHEET NO.
74	*	TAZEWELL	1366	351
STA.		TO STA.		
FED. ROAD DIST. NO.		ILLINOIS FED. AID PROJECT		
* (90-11R-2)90113, 14, 14-1R-1				



- LEGEND:**
- PERM SIGN, C68197 - PERMANENT SIGN, INSTALLED IN CONTRACT NO. 68199
  - TEMP SIGN, C68193 - EXISTING TEMPORARY SIGN INSTALLED IN CONTRACT 68195
  - RET - RETAIN EXISTING SIGN
  - PSR - REMOVAL IN PERMANENT SIGNING PLANS (TIMING OF REMOVAL INDICATED IN SUB-STAGE BY X'S)
  - RTSPA - REINSTALL TEMPORARY SIGN PANEL ASSEMBLY (INCLUDES REMOVAL)
  - CTSO - COMPOSITE TEMPORARY SIGN OVERLAY (INCLUDES REMOVAL)
  - SPO(S) - SIGN PANEL OVERLAY, SPECIAL (INCLUDES REMOVAL)
  - TSPO - TEMPORARY SIGN PANEL OVERLAY (INCLUDES REMOVAL)
  - TSPA - TEMPORARY SIGN PANEL ASSEMBLY (INCLUDES REMOVAL)
  - RSPA - REMOVE SIGN PANEL ASSEMBLY
  - RELSPA - RELOCATE SIGN PANEL ASSEMBLY
  - SP - SIGN PANEL, TYPE 1, 2 OR 3 AND ASSEMBLY TYPE A OR B.
  - TC&(SP) - SIGN INCLUDED IN MOT STANDARD FOR TRAFFIC CONTROL (PAID AS PART OF TRAFFIC CONTROL AND PROTECTION, SPECIAL)
  - TC&(EX) - SIGN INCLUDED IN MOT STANDARD FOR TRAFFIC CONTROL AND PROTECTION (PAID AS PART OF TRAFFIC CONTROL AND PROTECTION, EXPRESSWAYS)

PLACE ABOVE INITIAL SPEED CONTROL SIGNING IN ADVANCE OF PROJECT PER HIGHWAY STANDARDS 701416 AND 701400



REVISIONS	
NAME	DATE

ILLINOIS DEPARTMENT OF TRANSPORTATION  
**CONCEPTUAL TEMPORARY INFORMATION SIGNING PLAN**  
 CONTRACT 68201  
 STAGE 3A  
 DRAWN BY LM  
 CHECKED BY DPA  
 DATE 12-20-04

INFORMATION FOR THIS SHEET WAS PROVIDED BY ALFRED BENESCH & COMPANY

**alfred benesch & company**  
 CONSULTING ENGINEERS  
 205 NORTH MICHIGAN AVENUE, CHICAGO, ILLINOIS 60601



\$FILES \$TIMES \$DATES

D:\projects\68201\stage3a\stage3a.dwg 1/6/2005 2:36:56 PM