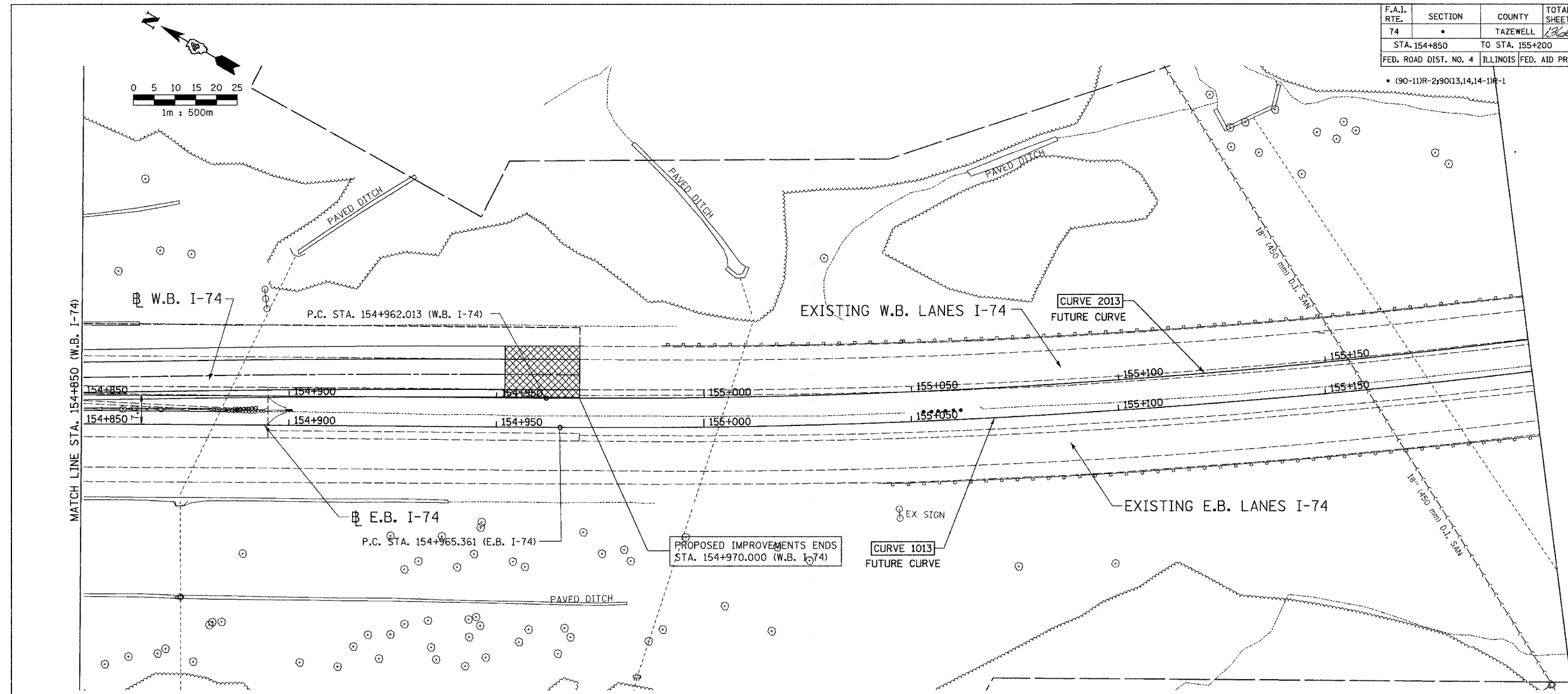


F.A.I. RTE.	SECTION	COUNTY	TOTAL SHEETS	SHEET NO.
74	.	TAZEWELL	1266	1011
STA. 154+850		TO STA. 155+200		
FED. ROAD DIST. NO. 4		ILLINOIS FED. AID PROJECT		



PROPOSED		LEGEND	
●	CATCH BASIN	△	STRUCTURE NUMBER
○	INLET	□	STRUCTURE TO BE ADJUSTED WITH NEW FRAME AND GRATE
⊙	MANHOLE	⊙	STRUCTURE TO BE ADJUSTED WITH NEW FRAME AND LID
⋈	SAG	①	STORM SEWER PIPE NUMBER
↔	SUMMIT	Ⓢ	STRUCTURE TO BE CLEANED
→	DITCH	Ⓢ	STRUCTURE TO BE FILLED
→	SWALE	REC	STRUCTURE TO BE RECONSTRUCTED WITH NEW FRAME AND LID
→	PIPE UNDERDRAIN	ADJ	STRUCTURE TO BE ADJUSTED
→	SANITARY SEWER		
→	STORM SEWER		
→	FLOW DIRECTION		
→	END SECTION		
→	CULVERT		
→	RIGHT-OF-WAY		
→	CONSTRUCTION LIMITS		

ALL DIMENSIONS ARE IN METERS (m) EXCEPT AS NOTED

SHEET 8 OF 12

ALL STATIONS INDICATED ARE WESTBOUND STATIONING UNLESS OTHERWISE NOTED.

DA
DAILY & ASSOCIATES,
ENGINEERS, INC.
PEORIA, ILLINOIS

REVISIONS	
NAME	DATE

ILLINOIS DEPARTMENT OF TRANSPORTATION

PROPOSED DRAINAGE & UTILITIES PLAN
F.A.I. ROUTE 74 (I-74)
STA. 154+850 TO STA. 155+200

DATE 01/07/2005

DRAWN BY
CHECKED BY

01/07/2005 02:40:43 PM
q:\data\5589-74\dwg\contract\i-74\15-60.dgn

CONTRACT 11: PLAN SET 2 OF 4 FINAL PLANS 01/05