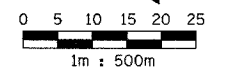


F.A.I. RTE.	SECTION	COUNTY	TOTAL SHEETS	SHEET NO.
74	*	TAZEWELL	1366	1014
STA. **	TO STA. **			
FED. ROAD DIST. NO. 4		ILLINOIS	FED. AID PROJECT	

* (90-11R-2;9013,14,14-1R-1
 ** RAMP L-3 STA. 10+300 TO STA. 10+700
 RAMP L-4 STA. 10+000 TO STA. 10+500



EXISTING		LEGEND	
	LIGHT POLE TO BE REMOVED (BY OTHERS)		STRUCTURE TO BE REMOVED
	CATCH BASIN		ITEM TO BE ABANDONED
	INLET		ITEM TO BE RELOCATED
	MANHOLE		STORM SEWER REMOVAL
	SAG		COMBINATION SEWER REMOVAL
	SUMMIT		PAVEMENT REMOVAL
	DITCH		SHOULDER REMOVAL
	SWALE		GUARDRAIL REMOVAL
	PIPE UNDERDRAIN		PAVED DITCH REMOVAL
	SANITARY SEWER (LOCATION OF RECORD)		RIGHT-OF-WAY
	STORM SEWER		CONSTRUCTION LIMITS
	COMBINATION SEWER		
	CULVERT		
	CONCRETE HEADWALL		
	FLOW DIRECTION		
	GAS (LOCATION OF RECORD)		
	TELEPHONE (LOCATION OF RECORD)		
	WATER (LOCATION OF RECORD)		
	DITCH		

ALL DIMENSIONS ARE IN METERS (m) EXCEPT AS NOTED



REVISIONS	
NAME	DATE

SHEET 11 OF 12
 ALL STATIONS INDICATED ARE WESTBOUND STATIONING UNLESS OTHERWISE NOTED.
 ILLINOIS DEPARTMENT OF TRANSPORTATION
 EXISTING DRAINAGE & UTILITIES PLAN
 F.A.I. ROUTE 74 (I-74)
 RAMP L-3
 STA. 10+300 TO STA. 10+700
 RAMP L-4
 STA. 10+000 TO STA. 10+500
 DRAWN BY
 DATE 01/07/2005 CHECKED BY

01/07/2005 02:40:46 PM
 G:\gdtr\5589-74\dwg\contr\cch\du102-6g.dgn

CONTRACT 11: PLAN SET 2 OF 4 FINAL PLANS 01/05