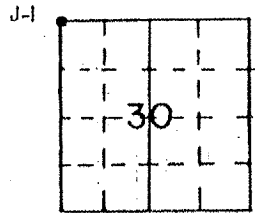
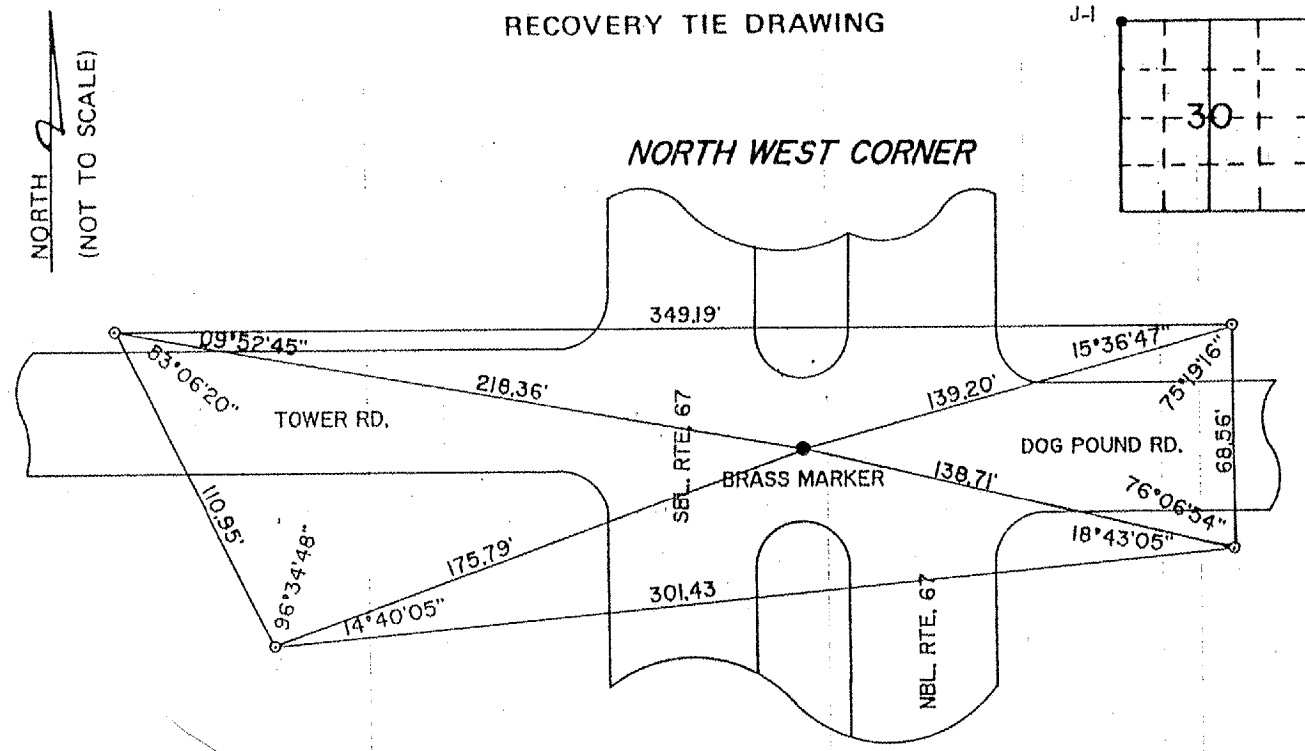


F.A.P. RTE.	SECTION	COUNTY	TOTAL SHEETS	SHEET NO.
310	138-2RS	McDONOUGH	66	5
STA. 5		TO STA. 5		
FED. ROAD DIST. NO.		ILLINOIS	FED. AID PROJECT	

RECOVERY TIE DRAWING



NOTE  
CONC. MON. AT ALL TIES

SECTION CORNER PER  
RIGHT-OF-WAY OR  
CONSTRUCTION PLANS

SETTING OF DISK NOTES

All ties for the section corner at the intersection of Dog Pound Road/Tower Road and US 67, as shown, have been located in the field and shall be verified by a licensed land surveyor prior to any milling operations. The section corner shall be reset at the direction of a licensed land surveyor after all paving and striping operations are complete. If any dimensions have been changed, it shall be the responsibility of the surveyor to file a new monument record in the McDonough County Courthouse.

A copy of all drawings or monument records produced from this project shall be sent to the Chief of Surveys, Illinois Department of Transportation, District 4, Peoria.

The supplying, drilling, setting of disks, professional services, labor and any additional work required to perform this work shall be paid for under pay item 66700305.

Refer to plan sheet no. 36 for the intersection location and plan sheet no. 62 for the standard drawing.

PLOT DATE = 3/24/2005  
FILE NAME = c:\projects\68334\hess.dgn  
PLOT SCALE = 1/8"=1'-0"  
REFERENCE = WICP

REVISIONS	
NAME	DATE

ILLINOIS DEPARTMENT OF TRANSPORTATION

**RECOVERY TIES**

SCALE: VERT. DATE  
HORIZ. CHECKED BY

DRAWN BY