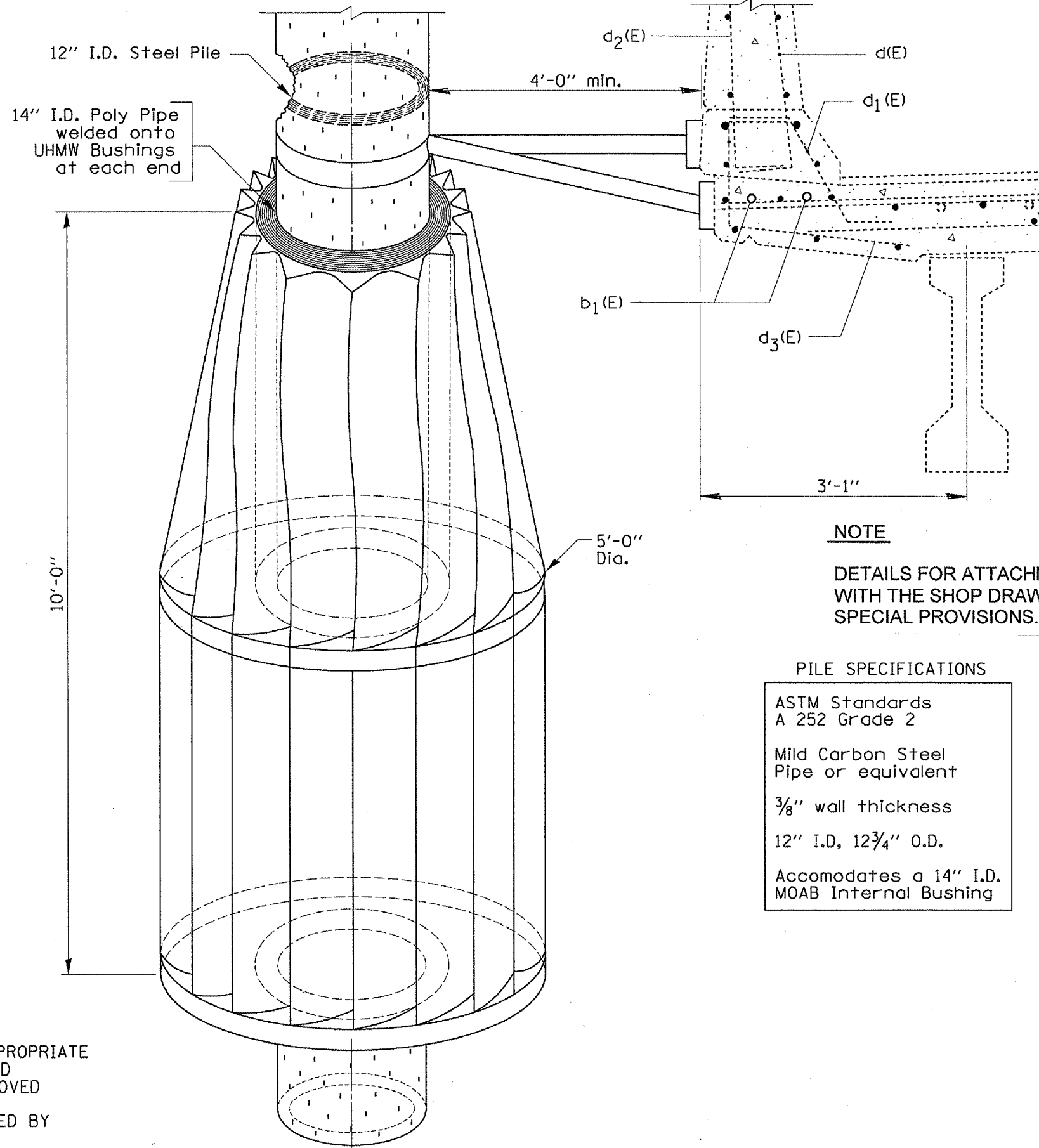


F.A.L. RY.	SECTION	COUNTY	TOTAL SHEETS	SHEET NO.
155	D4 DEBRIS ROL	TAZEWELL	10	10
STA. 665+90.43		TO STA. 671+40.20		
FED. ROAD DIST. NO. 4		ILLINOIS FED. AID PROJECT		



**NOTE**

DETAILS FOR ATTACHMENT TO THE BRIDGE SHALL BE INCLUDED WITH THE SHOP DRAWING SUBMITTAL REQUIRED BY THE SPECIAL PROVISIONS.

**PILE SPECIFICATIONS**

ASTM Standards  
 A 252 Grade 2  
 Mild Carbon Steel  
 Pipe or equivalent  
 3/8" wall thickness  
 12" I.D., 12 3/4" O.D.  
 Accomodates a 14" I.D.  
 MOAB Internal Bushing

**NOTE**

STEEL PILING TO BE DRIVEN 25'-0" IN APPROPRIATE LOCATIONS UPSTREAM FROM BRIDGE PIERS AND BACK-FILLED WITH CONCRETE BY STATE-APPROVED CONTRACTOR.  
 MOAB AND INSTALLATION ON PILES PROVIDED BY DEBRIS FREE, INC. OJAI, CA.  
 LOWER HALF-MOAB DGN. BY ROTONICS MFG. INC.

TO BE INSTALLED  
 AT S.N. 090-0100

REVISIONS	
NAME	DATE

ILLINOIS DEPARTMENT OF TRANSPORTATION

**MOAB  
 DETAIL**

SCALE: VERT.  
 HORIZ.  
 DATE 07-27-2004

DRAWN BY CEJ  
 CHECKED BY

PLOT DATE = # DATES  
 FILE NAME = # FILES  
 PLOT SCALE = # SCALES  
 REFERENCE = # SHEETS