

STATE OF ILLINOIS  
DEPARTMENT OF TRANSPORTATION

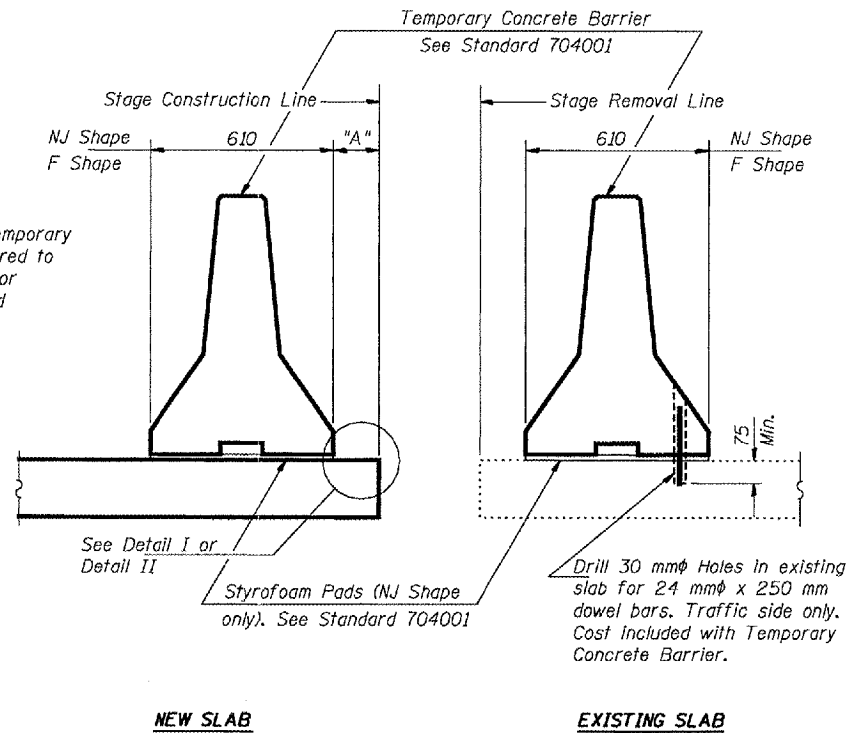
ROUTE NO.	SECTION	COUNTY	SHEET NO.	SHEET
			14	10
FED. ROAD DIST. NO. 7		ILLINOIS	FED. AID PROJECT-	

SHEET NO. 3

11 SHEETS

Contract #68492

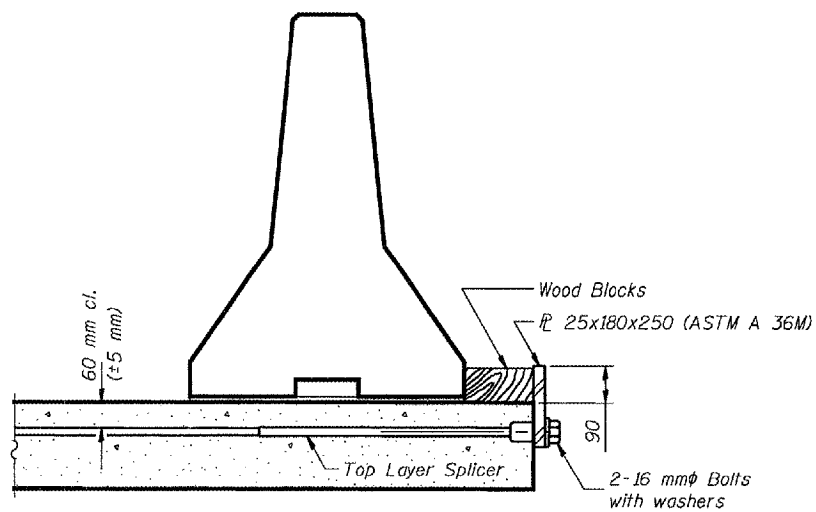
When "A" is 1 m or less, the temporary concrete barrier shall be anchored to new slab according to Detail I or Detail II. No anchorage required when "A" is greater than 1 m.



**SECTIONS THRU SLAB**

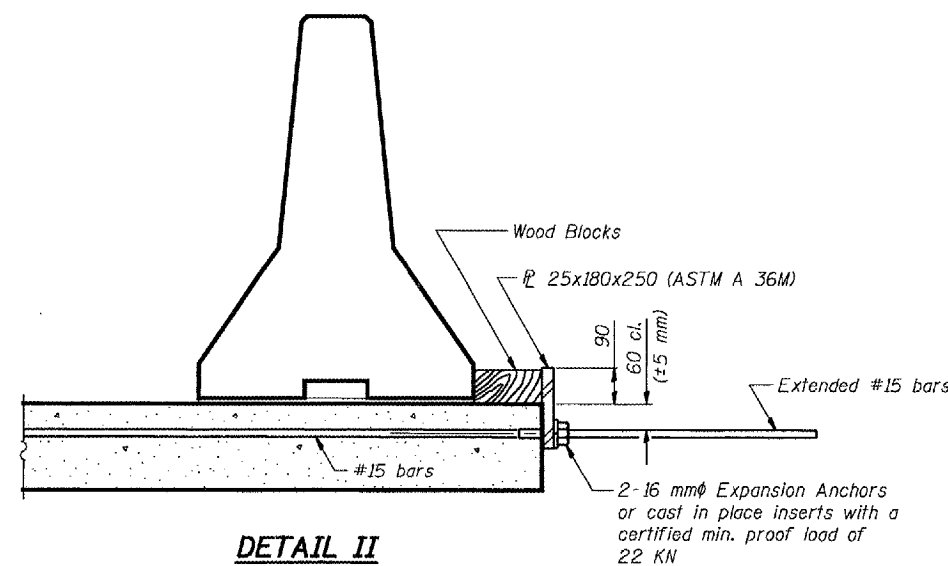
**NOTES**

- Detail I - With Bar Splicer or Couplers:**  
Connect one (1) 25x180x250 steel  $\bar{L}$  to the top layer of couplers with 2-16 mm $\phi$  bolts screwed to coupler at approximate  $\bar{C}$  of each barrier panel.
- Detail II - With Extended Reinforcement Bars:**  
Connect one (1) 25x180x250 steel  $\bar{L}$  to the concrete slab with 2-16 mm $\phi$  Expansion Anchors or cast in place inserts spaced between the top layer of reinforcement at approximate  $\bar{C}$  of each barrier panel.
- Cost of anchorage included with Temporary Concrete Barrier.  
All dimensions are in millimeters (mm) except as noted.



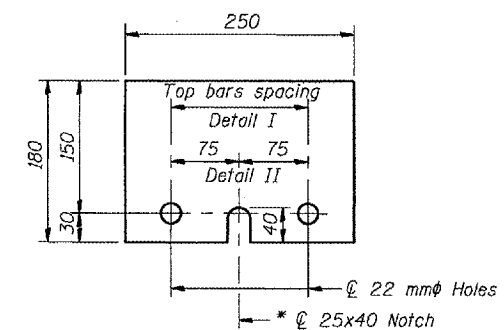
**DETAIL I**

The 25x180x250 Plate shall not be removed until Stage II Construction forms and reinforcement bars are in place.



**DETAIL II**

The 25x180x250 Plate shall not be removed until Stage II Construction forms and all reinforcement bars are in place and the concrete is ready to be placed.



**$\bar{L}$  25x180x250**

\* Required only with Detail II

DESIGNED	DAB
CHECKED	SJB
DRAWN	baliva
CHECKED	DAB SJB

May 10, 2005

EXAMINED *John A. Morris*  
ENGINEER OF STRUCTURAL SERVICES

PASSED *Ralph E. Anderson*  
ENGINEER OF BRIDGES AND STRUCTURES

R-27 (M)

**TEMPORARY BARRIER DETAILS**  
**SHERIDAN ROAD OVER**  
**FAI ROUTE 74 (I-74)**  
**PEORIA COUNTY**  
**SN 072-0193**