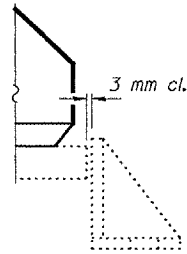


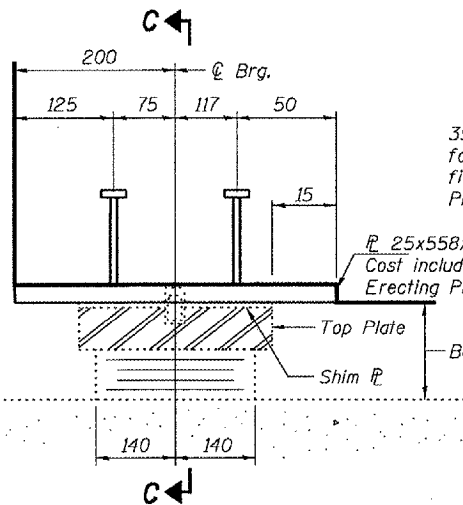
STATE OF ILLINOIS  
DEPARTMENT OF TRANSPORTATION

ROUTE NO.	SECTION	COUNTY	SHEET NO.	SHEETS
			18 14	11
FED. ROAD DIST. NO. 7	ILLINOIS	FED. AID PROJECT		

Contract #68492



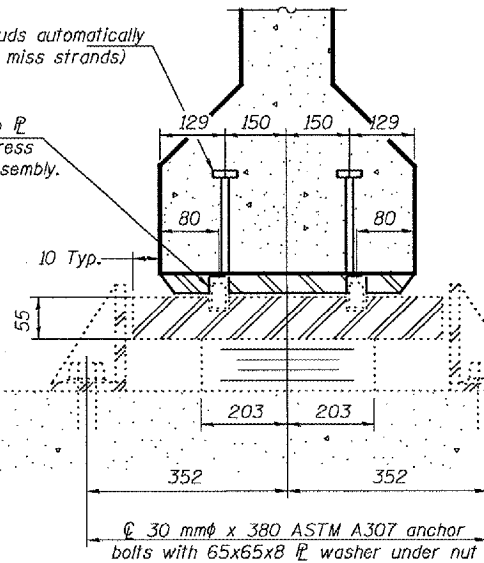
**SIDE RETAINER LOCATION**



**ELEVATION AT ABUTMENT**

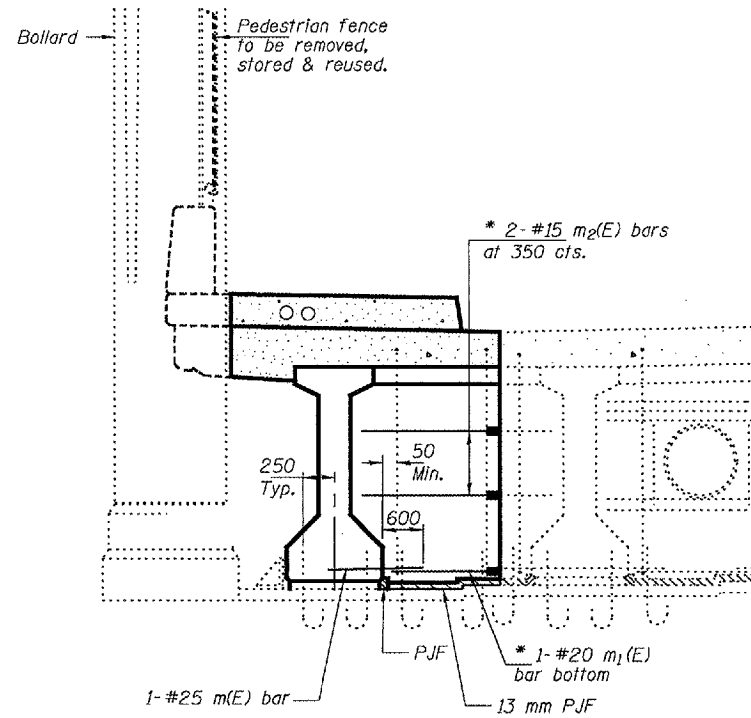
19 mmφ x 150 mm Studs automatically end welded (space to miss strands)  
35 mmφ holes 25 mm deep in top flange for 32 mmφ pintles. Thread or press fit pintles 25 mm into bearing assembly. Plug before casting beam.  
I-beam 25x558x367 cast with beam. Cost included with Furnishing & Erecting PPC I-Beams, 1372 mm.

**TYPE I ELASTOMERIC EXP. BRG.**

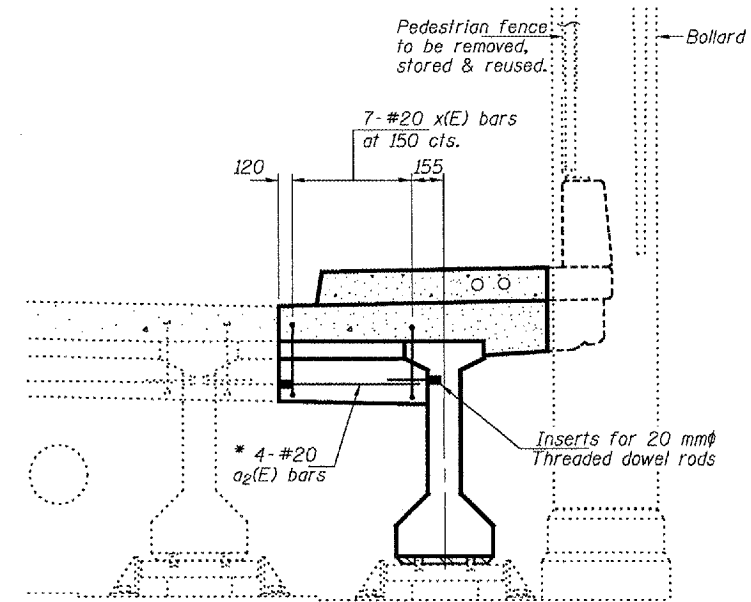


**SECTION C-C**

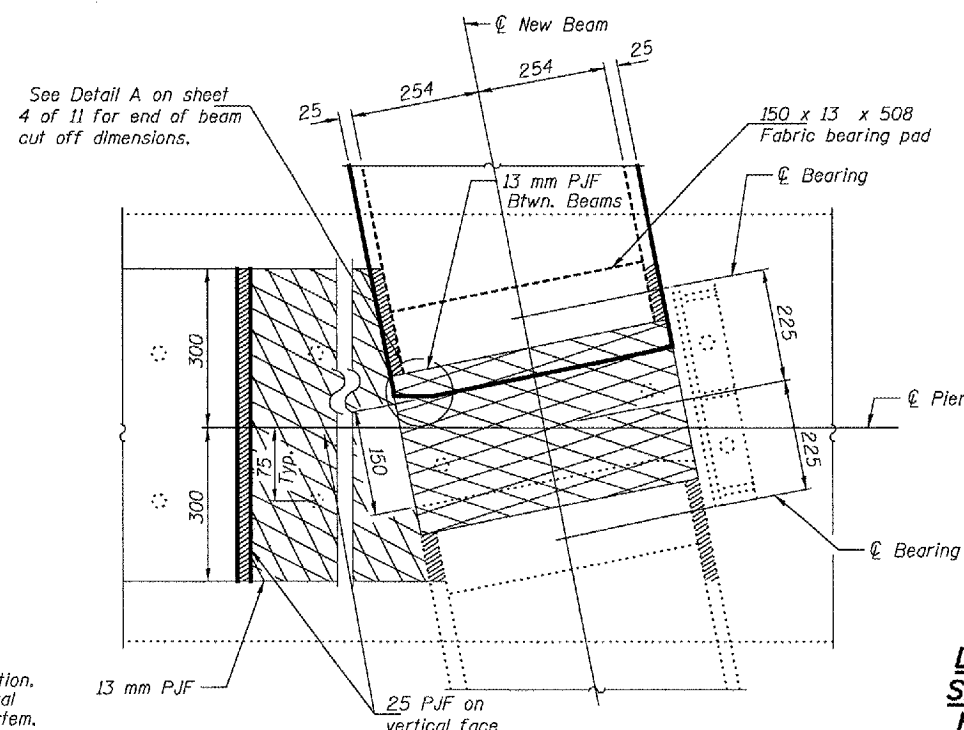
Notes:  
All dimensions are in millimeters (mm) except as noted.  
Reinforcement bars designated (E) shall be epoxy coated.  
All edges shall have 20 mm chamfer except as noted.  
x(E) bars are parallel to centerline of Roadway.  
Existing reinforcement extending into the removal area shall be cleaned, straightened and incorporated into the new construction. Any reinforcement bars that are damaged during concrete removal shall be replaced with an approved bar splicer or anchorage system. Cost shall be included with Concrete Removal.



**DIAPHRAGM AT PIER (FIXED)**  
(Looking North)



**DIAPHRAGM AT SOUTH ABUTMENT**  
(Looking South)



**PLAN - BEARING PAD AT PIER**

**DIAPHRAGM DETAILS**  
**SHERIDAN ROAD OVER**  
**FAI ROUTE 74 (I-74)**  
**PEORIA COUNTY**  
**SN 072-0193**

DESIGNED	DAB
CHECKED	SJB
DRAWN	ballva
CHECKED	DAB SJB

May 10, 2005  
EXAMINED *John A. Morris*  
ENGINEER OF STRUCTURAL SERVICES  
PASSED *Ralph E. Anderson*  
ENGINEER OF BRIDGES AND STRUCTURES