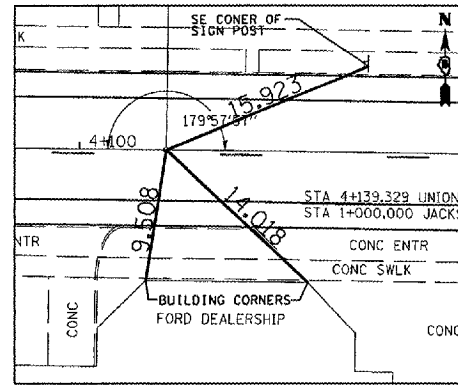
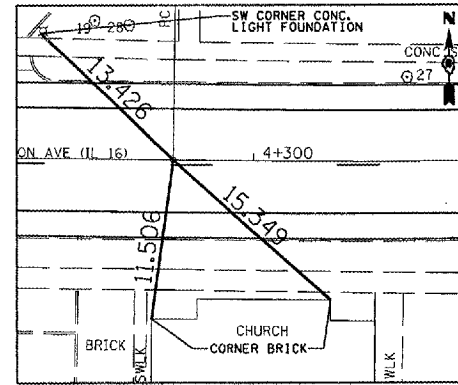


F.A.P. RTE.	SECTION	COUNTY	TOTAL SHEETS	SHEET NO.
325	21R5-4+24R5-7	MACOUPIN	39	12
STA. 4+106.323 TO STA. 7+394.519				
FED. ROAD DIST. NO. 5 ILLINOIS FED. AID PROJECT				

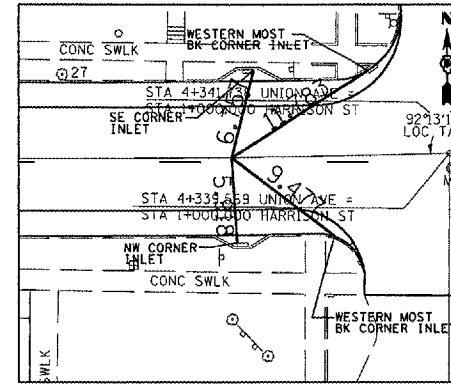
PK N&BC W/CHSLD "X"
FOR ALL CROSS TIES
EXCEPT STA 6+622.990



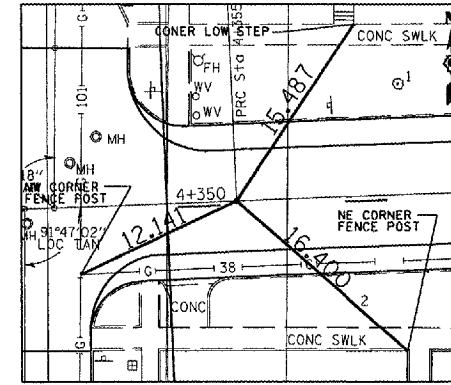
PI STA 4+106.323



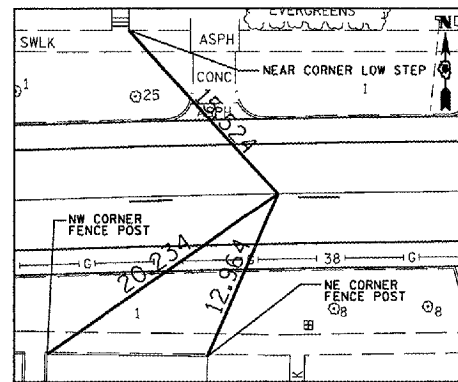
PC 30 STA 4+294.129



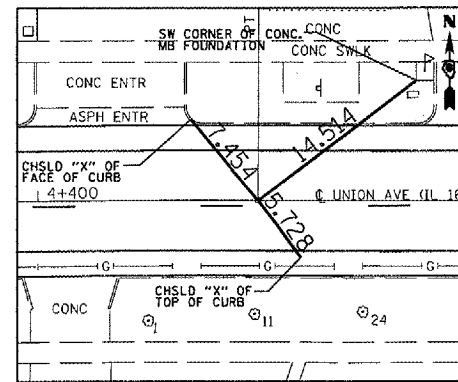
PI 30 STA 4+324.609



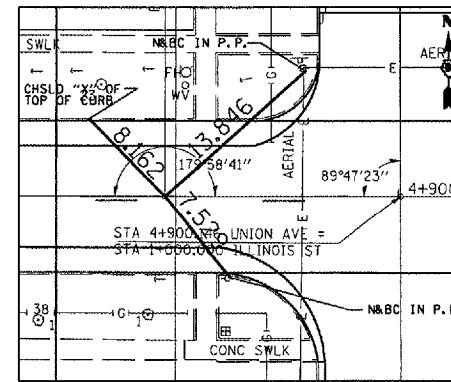
PRC STA 4+355.075



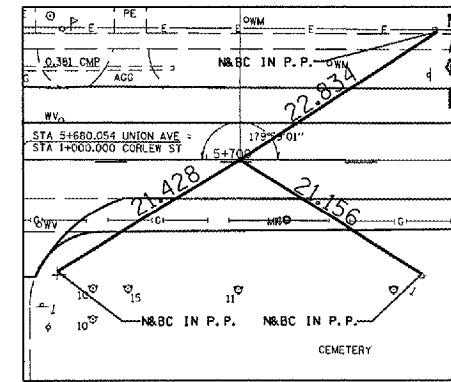
PI 32 STA 4+385.555



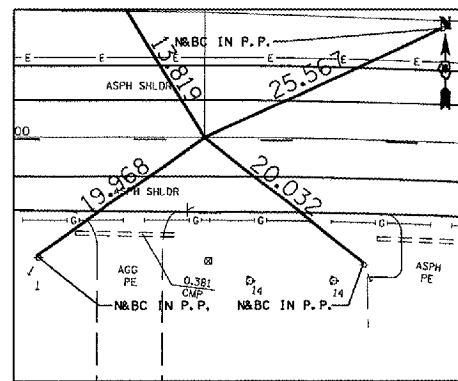
PT 32 STA 4+416.026



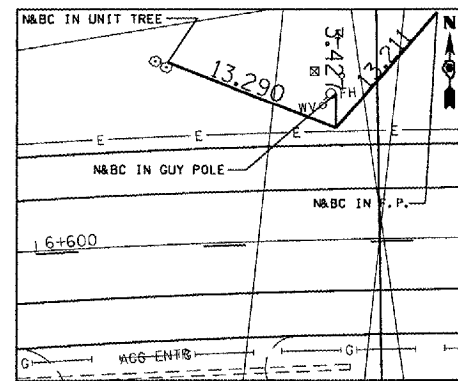
PI 146 STA 4+882.978



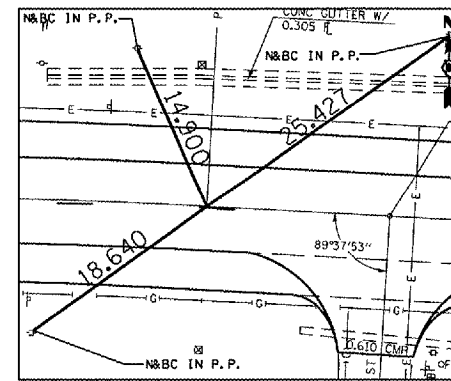
PI 141 STA 5+703.263



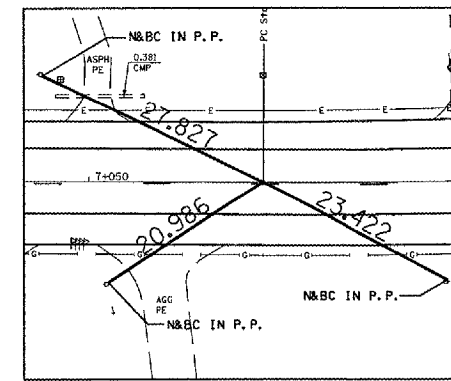
PC 35 STA 6+521.308



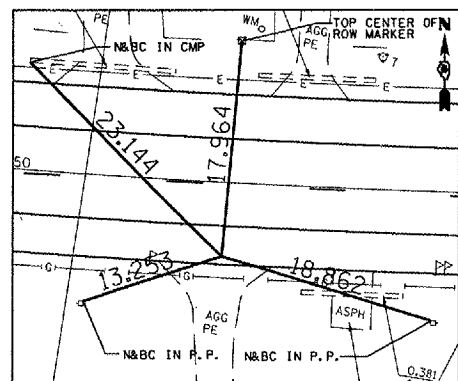
PI 35 STA 6+622.990
#4 REBAR W/CAP - FLUSH



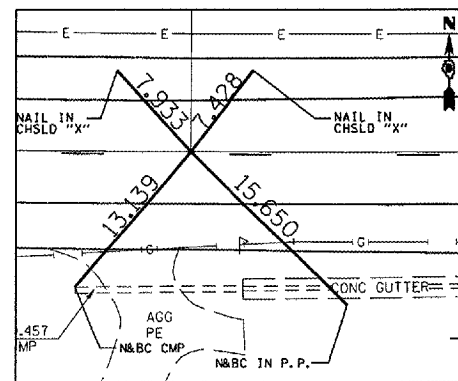
PT 35 STA 6+722.655



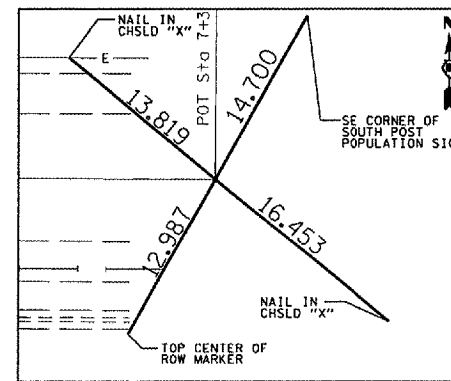
PC 36 STA 7+069.55



PI 36 STA 7+171.612



PT 36 STA 7+272.767



POT 121 STA 7+394.519

DATE-TIME
REF
REF
REF

PROJECT: D653836 FILE: X1168 .DGN

REVISIONS		ILLINOIS DEPARTMENT OF TRANSPORTATION
NAME	DATE	
		CROSS TIES

DRAWN BY BOK
CHECKED BY MSD