

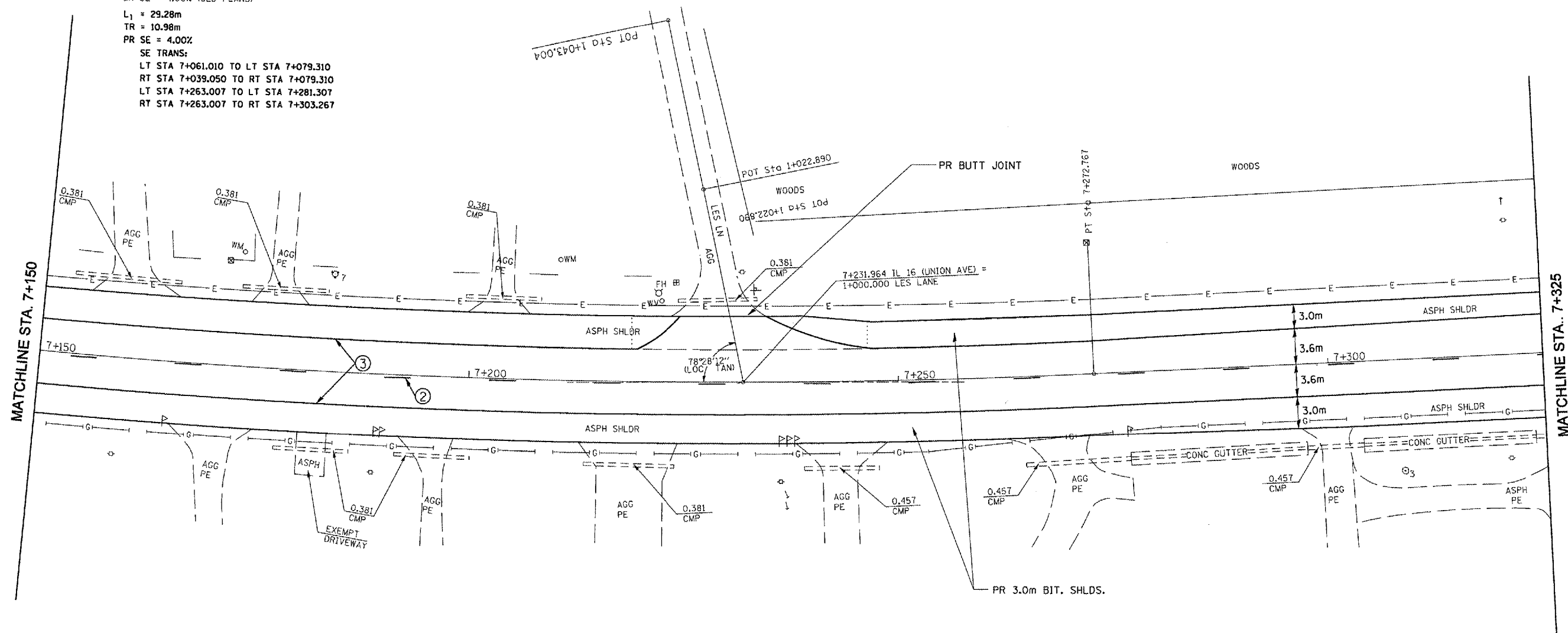
F.A.P. RTE.	SECTION	COUNTY	TOTAL SHEETS	SHEET NO.
325		MONTGOMERY	39	32
STA. 7+150		TO STA. 7+730		
FED. ROAD DIST. NO.		ILLINOIS FED. AID PROJECT		

• 21RS-4; 24RS-7
CONTRACT NO. 72444



Exist. Curve 36
PI Sta. 7+171.612
 $\Delta = 13^\circ 13' 40''$ (LT)
T = 102.062 m
R = 880.234 m
L = 203.218 m
E = 5.897 m
PC Sta. 7+069.550
PT Sta. 7+272.767
EX SE = 4.00% (OLD PLANS)

L₁ = 29.28m
TR = 10.98m
PR SE = 4.00%
SE TRANS:
LT STA 7+061.010 TO LT STA 7+079.310
RT STA 7+039.050 TO RT STA 7+079.310
LT STA 7+263.007 TO LT STA 7+281.307
RT STA 7+263.007 TO RT STA 7+303.267



LEGEND

- ① PR THERMOPLASTIC PAVEMENT MARKING, LINE - 125mm (SOLID YELLOW)
- ② PR THERMOPLASTIC PAVEMENT MARKING, LINE - 125mm (SKIP-DASH YELLOW)
- ③ PR THERMOPLASTIC PAVEMENT MARKING, LINE - 125mm (SOLID WHITE)
- ④ PR THERMOPLASTIC PAVEMENT MARKING, LINE - 150mm (SOLID WHITE)
- ⑤ PR PREFORMED PLASTIC PAVEMENT MARKING, LINE - 300mm (SOLID YELLOW)
- ⑥ PR PREFORMED PLASTIC PAVEMENT MARKING, LINE - 600mm (SOLID WHITE)
- ⑦ PR PREFORMED PLASTIC PAVEMENT MARKING, LETTERS & SYMBOLS (WHITE)

REVISIONS	
NAME	DATE

ILLINOIS DEPARTMENT OF TRANSPORTATION
PLAN SHEETS
SECTION : 21RS-4; 24RS-7
MONTGOMERY COUNTY
DRAWN BY
CHECKED BY
DATE