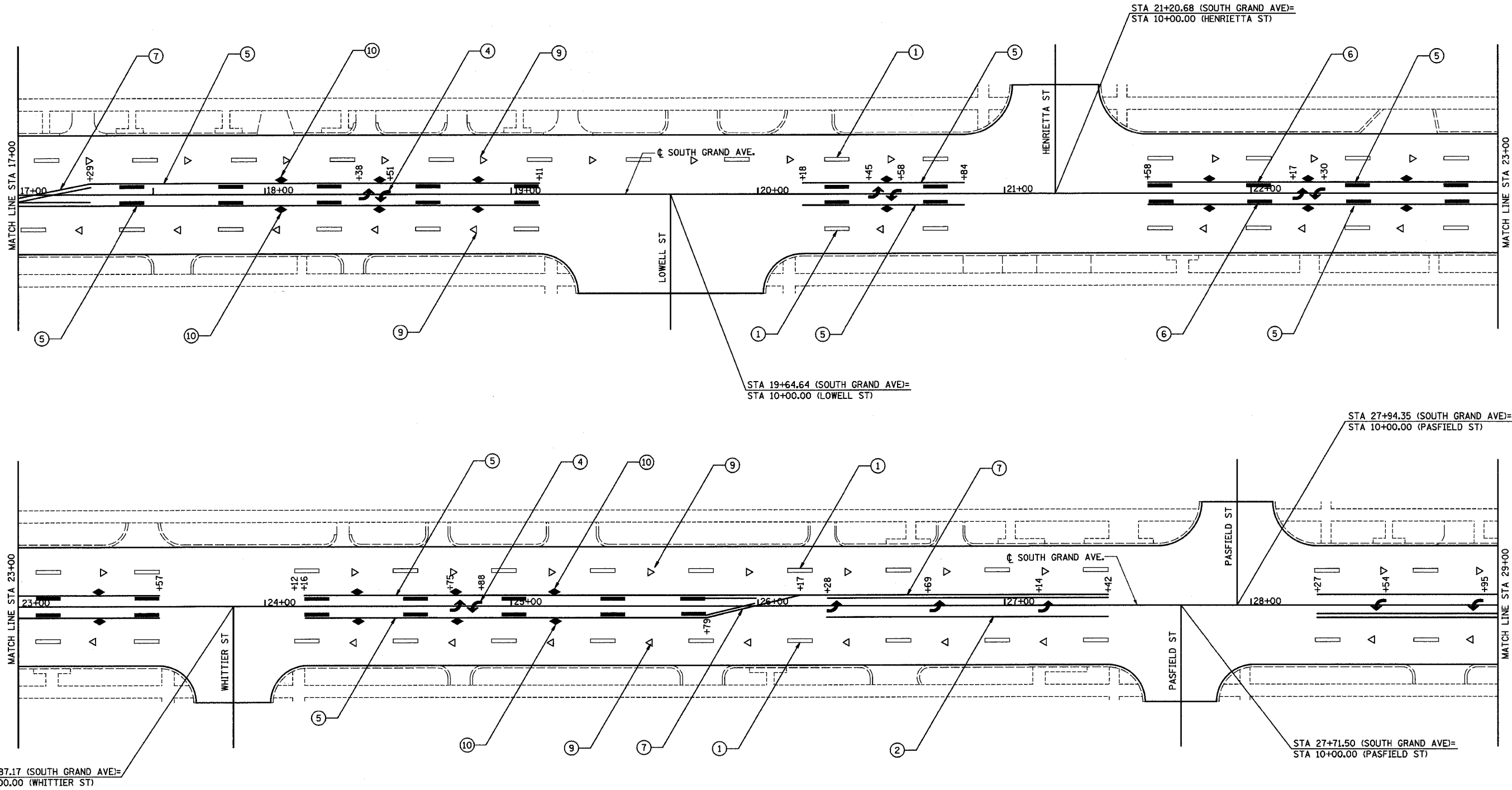


PRO. NO.	SECTION	COUNTY	TOTAL SHEETS	SHEET NO.
7989	*	SANGAMON	61	48
STA. TO STA.				
EXISTING CONDITIONS:				
* D-6 RESURFACING 2005-1 CONTRACT NO. 72790				

PLAN	SURVEYED	DATE
	BY	
	NO. OF W.A. CHECKED	
	NO. OF P.L. CHECKED	
	NO. OF P.L. FILED	
	NO.	



- LEGEND**
- ① PREFORMED PLASTIC PAVEMENT MARKING LINE, TYPE B - 5" WHITE SKIP DASH 10' ON/30' OFF
 - ② PREFORMED PLASTIC PAVEMENT MARKING LINE, TYPE B - 6" WHITE LINE
 - ③ PREFORMED PLASTIC PAVEMENT MARKING LINE, TYPE B - 24" WHITE STOP BAR
 - ④ PREFORMED PLASTIC PAVEMENT MARKING, TYPE B - LETTERS AND SYMBOLS
 - ⑤ THERMOPLASTIC PAVEMENT MARKING LINE - 5" YELLOW LINE
 - ⑥ THERMOPLASTIC PAVEMENT MARKING LINE - 5" YELLOW SKIP DASH 10' ON/30' OFF
 - ⑦ PREFORMED PLASTIC PAVEMENT MARKING LINE, TYPE B - 5" DOUBLE YELLOW LANE LINE
 - ⑧ PREFORMED PLASTIC PAVEMENT MARKING LINE, TYPE B - 12" YELLOW DIAGONAL @ 45°, 20' C-C
 - ⑨ RAISED REFLECTIVE PAVEMENT MARKERS - 1 WAY CRYSTAL
 - ⑩ RAISED REFLECTIVE PAVEMENT MARKERS - 2 WAY AMBER
 - ⑪ PREFORMED PLASTIC PAVEMENT MARKING LINE, TYPE B - 8" WHITE LINE
 - ⑫ THERMOPLASTIC PAVEMENT MARKING LINE - 12" WHITE LINE

HOMER L. CHASTAIN & ASSOCIATES, LLP
 CONSULTING ENGINEERS
 DECATUR (217) 422-8544
 CHICAGO (773) 714-0050
 184-001397

REVISIONS	
NAME	DATE

ILLINOIS DEPARTMENT OF TRANSPORTATION
 FAU ROUTE 7989
 SOUTH GRAND AVE.
 SECTION D-6 RESURFACING 2005-1
 SANGAMON COUNTY
PAVEMENT MARKING PLAN
 DRAWN BY: WJW CHECKED BY: GLF