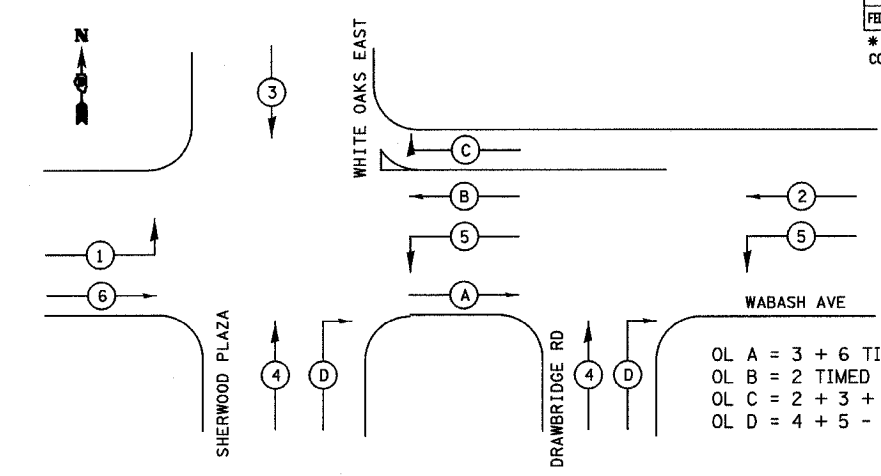


F.A. RTE.	SECTION	COUNTY	TOTAL SHEETS	SHEET NO.
664	*	SANGAMON	61	52
STA. TO STA.		FED. ROAD DIST. NO. ILLINOIS FED. AID PROJECT		
		* D-6 RESURFACING 2005-1		
		CONTRACT NO. 72790		

TRAFFIC SIGNAL QUANTITIES

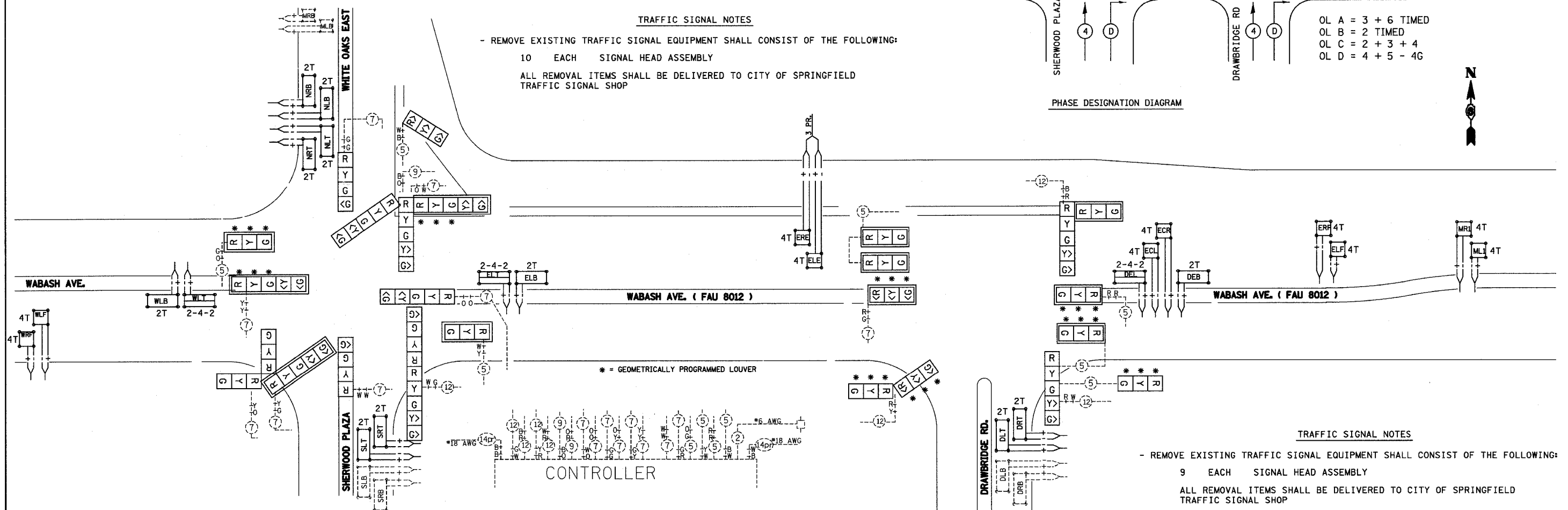
LOCATION: WABASH AVE & EAST MALL ENTRANCE

QUANTITY	UNIT	ITEM
5	EACH	TRAFFIC SIGNAL BACKPLATE
1195.0	FOOT	DETECTOR LOOP, TYPE I
1	EACH	REMOVE EXISTING TRAFFIC SIGNAL EQUIPMENT
9	EACH	GEOMETRICALLY PROGRAMMED LOUVER
1	EACH	SIGNAL HEAD, POLYCARBONATE, LED, 1-FACE, 3-SECTION, BRACKET MOUNTED
2	EACH	SIGNAL HEAD, POLYCARBONATE, LED, 1-FACE, 4-SECTION, BRACKET MOUNTED
2	EACH	SIGNAL HEAD, POLYCARBONATE, LED, 1-FACE, 5-SECTION, BRACKET MOUNTED
2	EACH	SIGNAL HEAD, POLYCARBONATE, LED, 1-FACE, 3-SECTION, MAST ARM MOUNTED
1	EACH	SIGNAL HEAD, POLYCARBONATE, LED, 2-FACE, 1-4 SECTION, 1-5 SECTION, BRACKET MOUNTED
1	EACH	SIGNAL HEAD, POLYCARBONATE, LED, 3-FACE, 2-3 SECTION, 1-5 SECTION, BRACKET MOUNTED
1	EACH	SIGNAL HEAD, POLYCARBONATE, LED, 3-FACE, 5-SECTION, BRACKET MOUNTED



TRAFFIC SIGNAL NOTES

- REMOVE EXISTING TRAFFIC SIGNAL EQUIPMENT SHALL CONSIST OF THE FOLLOWING:  
 10 EACH SIGNAL HEAD ASSEMBLY  
 ALL REMOVAL ITEMS SHALL BE DELIVERED TO CITY OF SPRINGFIELD TRAFFIC SIGNAL SHOP



TRAFFIC SIGNAL NOTES

- REMOVE EXISTING TRAFFIC SIGNAL EQUIPMENT SHALL CONSIST OF THE FOLLOWING:  
 9 EACH SIGNAL HEAD ASSEMBLY  
 ALL REMOVAL ITEMS SHALL BE DELIVERED TO CITY OF SPRINGFIELD TRAFFIC SIGNAL SHOP

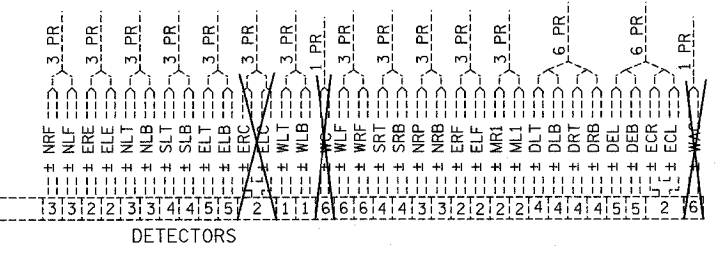
TRAFFIC SIGNAL QUANTITIES

LOCATION: WABASH AVE & DRAWBRIDGE

QUANTITY	UNIT	ITEM
6	EACH	TRAFFIC SIGNAL BACKPLATE
743.0	FOOT	DETECTOR LOOP, TYPE I
1	EACH	REMOVE EXISTING TRAFFIC SIGNAL EQUIPMENT
18	EACH	GEOMETRICALLY PROGRAMMED LOUVER
3	EACH	SIGNAL HEAD, POLYCARBONATE, LED, 1-FACE, 3-SECTION, BRACKET MOUNTED
1	EACH	SIGNAL HEAD, POLYCARBONATE, LED, 1-FACE, 5-SECTION, BRACKET MOUNTED
3	EACH	SIGNAL HEAD, POLYCARBONATE, LED, 1-FACE, 3-SECTION, MAST ARM MOUNTED
1	EACH	SIGNAL HEAD, POLYCARBONATE, LED, 2-FACE, 3-SECTION, BRACKET MOUNTED
1	EACH	SIGNAL HEAD, POLYCARBONATE, LED, 2-FACE, 1-3 SECTION, 1-5 SECTION, BRACKET MOUNTED

THE FOLLOWING LOOPS SHALL NOT BE REPLACED

- ERC
- ELC
- WC
- WAC



REVISIONS	
NAME	DATE

ILLINOIS DEPARTMENT OF TRANSPORTATION

**PROPOSED WIRING DIAGRAM**

WABASH AVE & EAST MALL ENTRANCE / DRAWBRIDGE

SCALE: VERT.      DRAWN BY KDA  
 HORIZ.              CHECKED BY  
 DATE NOV. 2004

PLOT DATE = \*DATE\*  
 FILE NAME = \*FILE\*  
 PLOT SCALE = \*SCALE\*  
 REFERENCE = \*REF\*