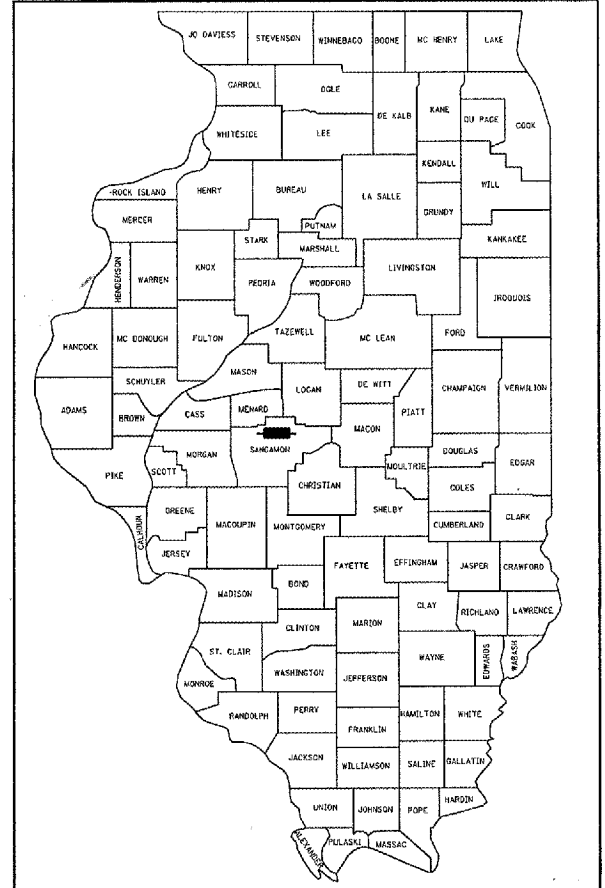


F.A.S. RTE.	SECTION	COUNTY	TOTAL SHEETS	SHEET NO.
1645	150 RS	SANGAMON	28	1

CONTRACT NO. 72876

D-96-510-04



LOCATION OF SECTION INDICATED THUS: - [black rectangle] -

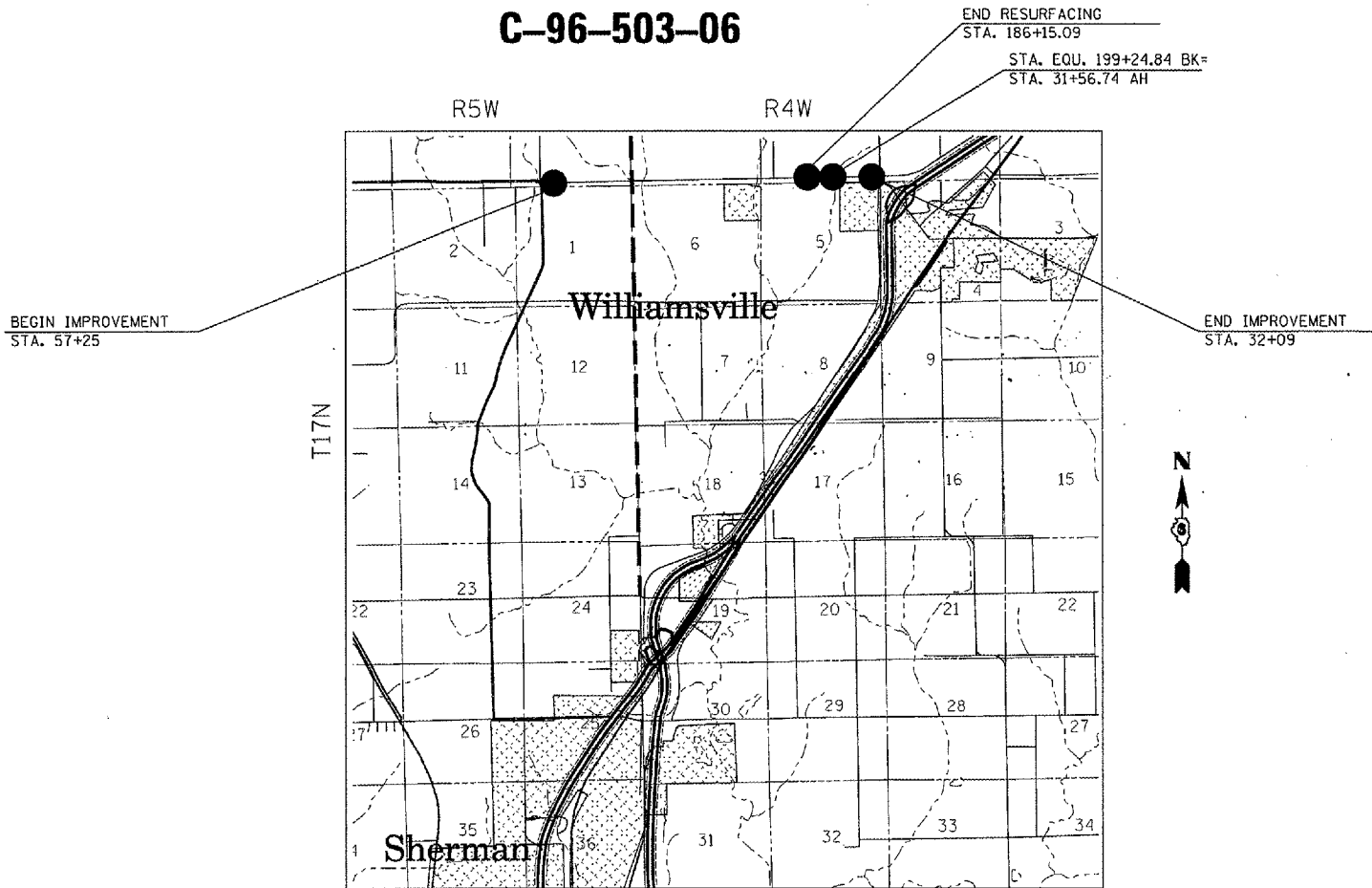
STATE OF ILLINOIS
DEPARTMENT OF TRANSPORTATION
DIVISION OF HIGHWAYS

**PROPOSED
HIGHWAY PLANS**

FAS ROUTE 1645 (IL 123)
SECTION 150 RS
PROJECT: RS-1645(106)
SANGAMON COUNTY
C-96-503-06

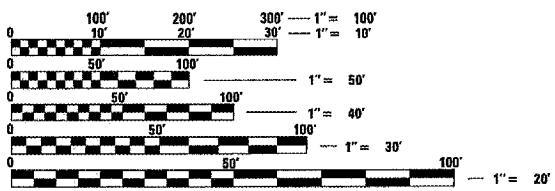
FOR INDEX OF SHEETS, SEE SHEET NO. 2

HIGHWAY CLASSIFICATION
FAS 1645
FUNCTIONAL CLASS - MAJOR COLLECTOR
ADT (2004) - 7200
ADT (2005) - 7300
ADT (2025) - 8700
PV - 71.7%
SU - 13.4%
MU - 14.9%



PROJECT LOCATION

TOTAL LENGTH OF SECTION = 12890.1 FT = 2.4 MILES



FULL SIZE PLANS HAVE BEEN PREPARED USING STANDARD ENGINEERING SCALES. REDUCED SIZED PLANS WILL NOT CONFORM TO STANDARD SCALES. IN MAKING MEASUREMENTS ON REDUCED PLANS, THE ABOVE SCALES MAY BE USED.

J.U.L.I.E.
JOINT UTILITY LOCATION INFORMATION FOR EXCAVATION
1-800-892-0123

STATE OF ILLINOIS
DEPARTMENT OF TRANSPORTATION
DIVISION OF HIGHWAYS

SUBMITTED March 22, 2005
Chris H. Reed
DISTRICT ENGINEER

May 13, 2005
Mike Hene
ENGINEER OF DESIGN AND ENVIRONMENT

May 13, 2005
Victor Modere
DIRECTOR, DIVISION OF HIGHWAYS

**PRINTED BY THE AUTHORITY
OF THE STATE OF ILLINOIS**

PROJECT ENGINEER: JOHN BARANZELLI (217)762-5503
SQUAD LEADER: VICTOR T. YOUNG (217)557-7897

CONTRACT NO. 72876