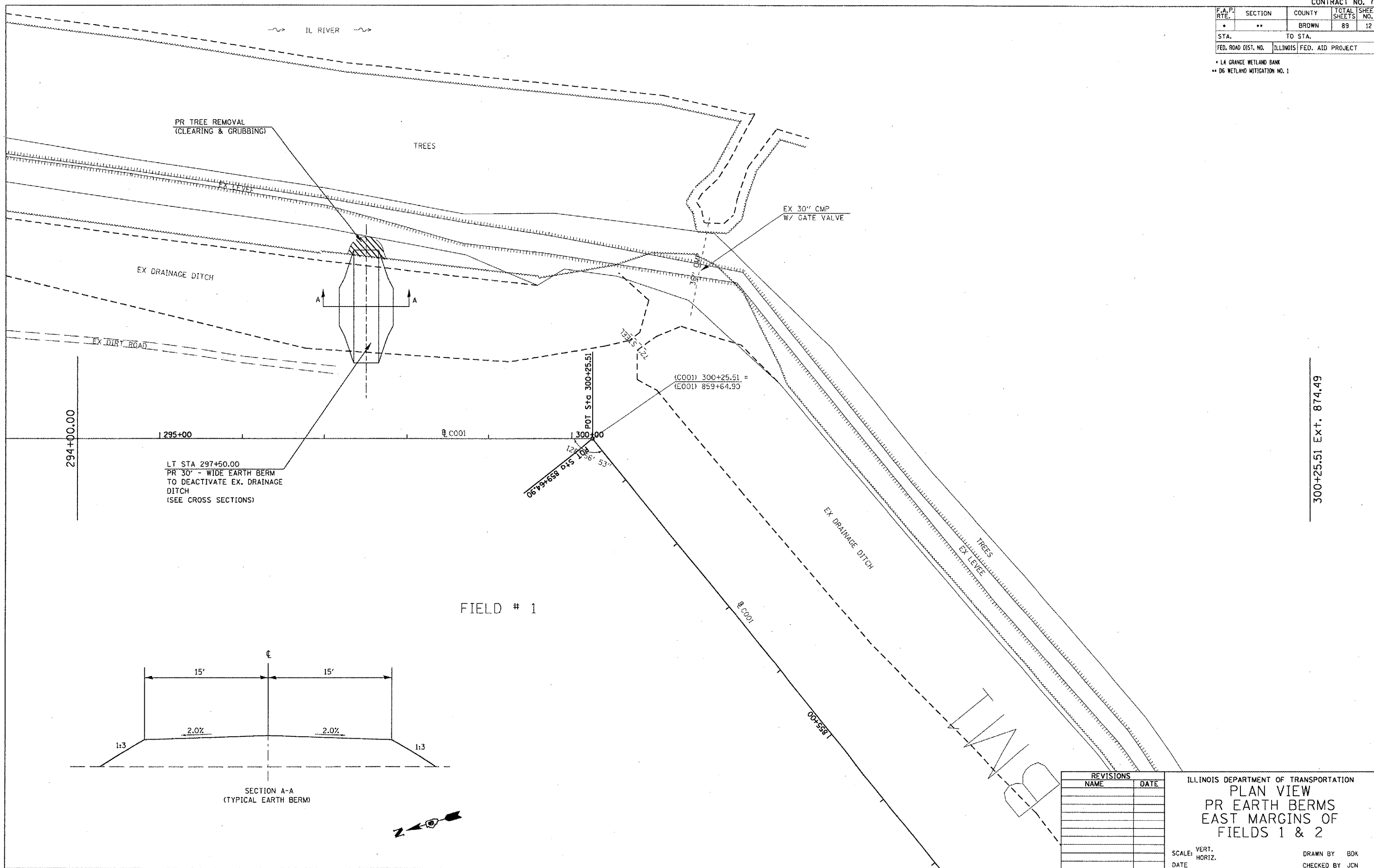


F.A.P. RTE.	SECTION	COUNTY	TOTAL SHEETS	SHEET NO.
*	**	BROWN	89	12
STA.		TO STA.		
FED. ROAD DIST. NO.		ILLINOIS FED. AID PROJECT		

\* LA GRANGE WETLAND BANK  
 \*\* D6 WETLAND MITIGATION NO. 1



294+00.00

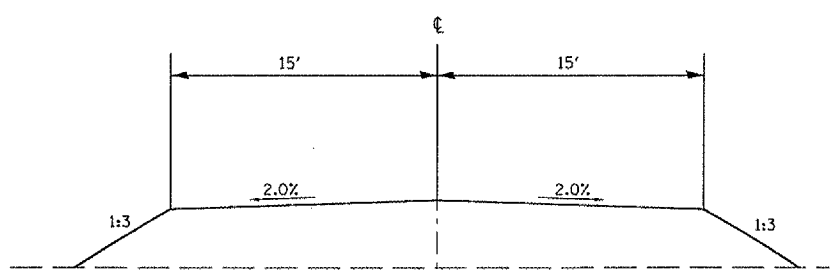
LT STA 297+50.00  
 PR 30' - WIDE EARTH BERM  
 TO DEACTIVATE EX. DRAINAGE  
 DITCH  
 (SEE CROSS SECTIONS)

POT Sta 300+25.51  
 06+79+658 0+45 100  
 128' 106' 53'

(C001) 300+25.51 =  
 (E001) 859+64.90

300+25.51 Ext. 874.49

FIELD # 1



SECTION A-A  
 (TYPICAL EARTH BERM)



REVISIONS	
NAME	DATE

ILLINOIS DEPARTMENT OF TRANSPORTATION  
 PLAN VIEW  
 PR EARTH BERMS  
 EAST MARGINS OF  
 FIELDS 1 & 2

SCALE: VERT. \_\_\_\_\_  
 HORIZ. \_\_\_\_\_  
 DATE \_\_\_\_\_  
 DRAWN BY BDX  
 CHECKED BY JCN

PLOT DATE = 2/1/2005  
 FILE NAME = c:\projects\72939\plan\72939.dgn  
 PLOT SCALE = 1/8" = 1'-0"  
 REFERENCE = MCEP