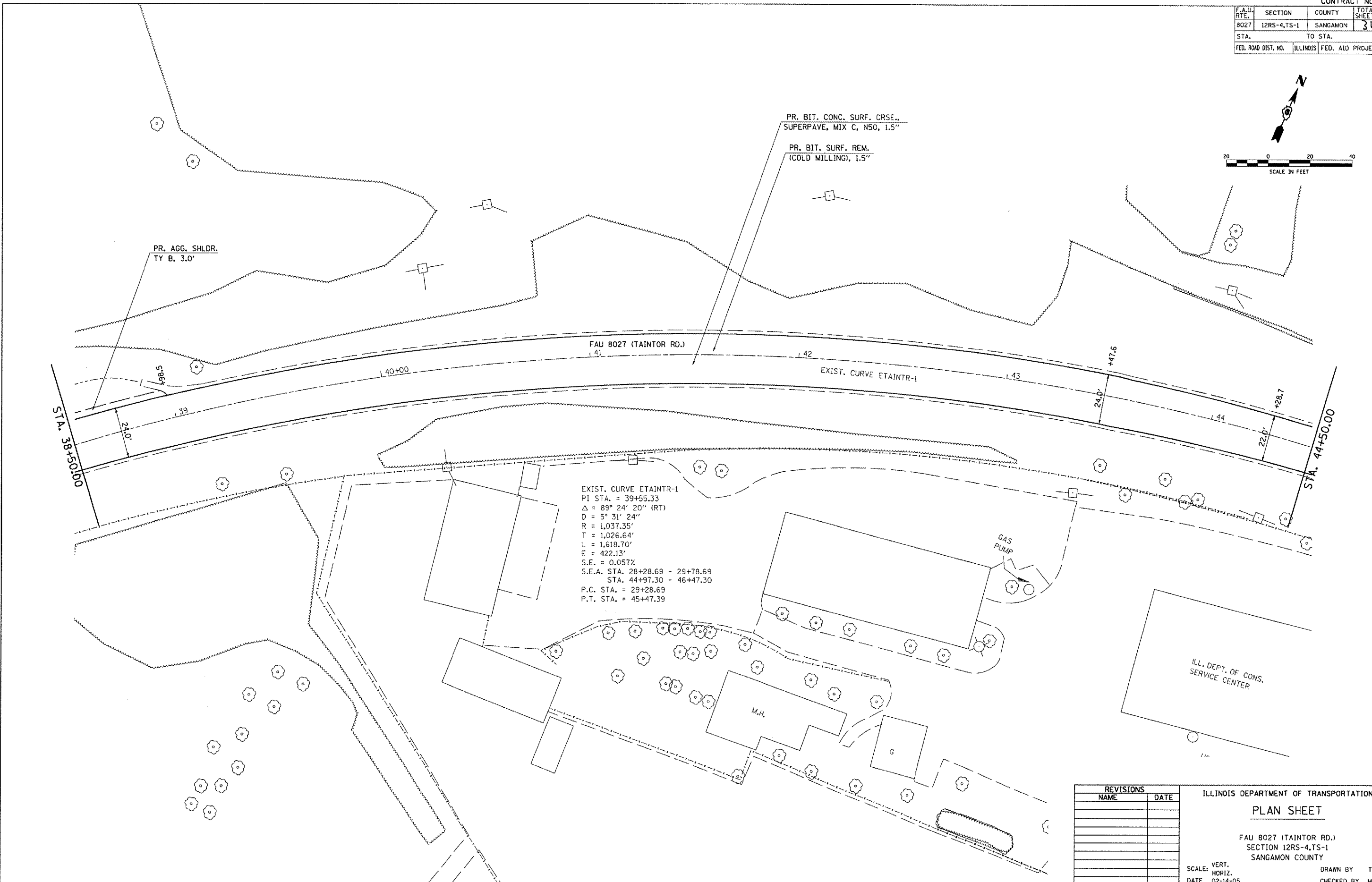
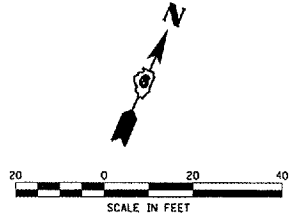


F.A.U. RTE.	SECTION	COUNTY	TOTAL SHEETS	SHEET NO.
8027	12RS-4,TS-1	SANGAMON	31	20
STA.		TO STA.		
FED. ROAD DIST. NO.		ILLINOIS	FED. AID PROJECT	



EXIST. CURVE ETAINTR-1
 PI STA. = 39+55.33
 $\Delta = 89^\circ 24' 20''$ (RT)
 $D = 5^\circ 31' 24''$
 $R = 1,037.35'$
 $T = 1,026.64'$
 $L = 1,618.70'$
 $E = 422.13'$
 $S.E. = 0.057\%$
 S.E.A. STA. 28+28.69 - 29+78.69
 STA. 44+97.30 - 46+47.30
 P.C. STA. = 29+28.69
 P.T. STA. = 45+47.39

REVISIONS	
NAME	DATE

ILLINOIS DEPARTMENT OF TRANSPORTATION
PLAN SHEET
 FAU 8027 (TAINTOR RD.)
 SECTION 12RS-4,TS-1
 SANGAMON COUNTY
 SCALE: VERT. _____
 HORIZ. _____
 DATE 02-14-05
 DRAWN BY TMJ
 CHECKED BY MEB

PLOT DATE = 4/1/2005
 FILE NAME = c:\p\proj\8027\80272005\shplan1.dgn
 PLOT SCALE = 43.3734 / 1 IN.
 REFERENCE = #REF#