

F.A.P. RTE.	SECTION	COUNTY	TOTAL SHEETS	SHEET NO.
327	(2-2)N	LAWRENCE	38	1

SEE SHEET 2 FOR INDEX OF SHEETS

STATE OF ILLINOIS
DEPARTMENT OF TRANSPORTATION
DIVISION OF HIGHWAYS

**PROPOSED
HIGHWAY PLANS**

FAP ROUTE 327 (US 50)

PROJECT NO: *HS-0327(034)*

SECTION (2-2)N

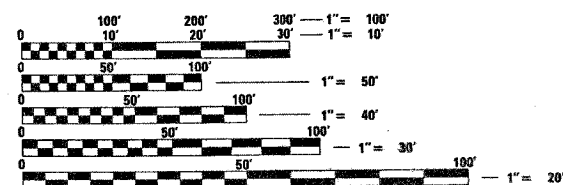
LAWRENCE COUNTY

TURN LANE INSTALLATION

C-97-048-04



ADT (2004) = 4700

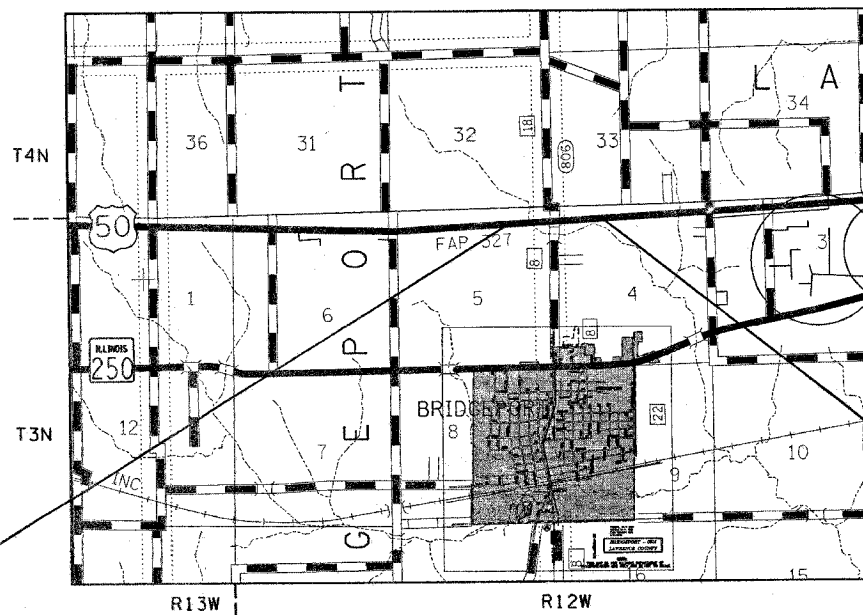


FULL SIZE PLANS HAVE BEEN PREPARED USING STANDARD ENGINEERING SCALES. REDUCED SIZED PLANS WILL NOT CONFORM TO STANDARD SCALES. IN MAKING MEASUREMENTS ON REDUCED PLANS, THE ABOVE SCALES MAY BE USED.

J.U.L.I.E.
JOINT UTILITY LOCATION INFORMATION FOR EXCAVATION
1-800-892-0123

CONTRACT NO. 74035

TOWNSHIP : BRIDGEPORT, LAWRENCE



PROJECT BEGINS
STA. 349+86

PROJECT ENDS
STA. 366+02

GROSS LENGTH = 1616.0 FEET = 0.31 MILES
NET LENGTH = 1616.0 FEET = 0.31 MILES

STATE OF ILLINOIS
DEPARTMENT OF TRANSPORTATION
DIVISION OF HIGHWAYS

SUBMITTED APRIL 1 20 05
Christina M. Radtke
DEPUTY DIRECTOR OF HIGHWAYS, REGION ENGINEER

May 13, 2005
Mike Hine
ENGINEER OF DESIGN AND ENVIRONMENT

May 13, 20 05
Victor Maden
DIRECTOR OF HIGHWAYS, CHIEF ENGINEER

**PRINTED BY THE AUTHORITY
OF THE STATE OF ILLINOIS**

teasleayck
3/31/2005
projects\74035\d02004pa.dgn

PROJECT ENGINEER : MARK DAUGHERTY
SQUAD LEADER : KRISTI SANDSCHAFFER
DESIGNER : KRISTI SANDSCHAFFER
TELEPHONE : 217/342-3951 EX 313