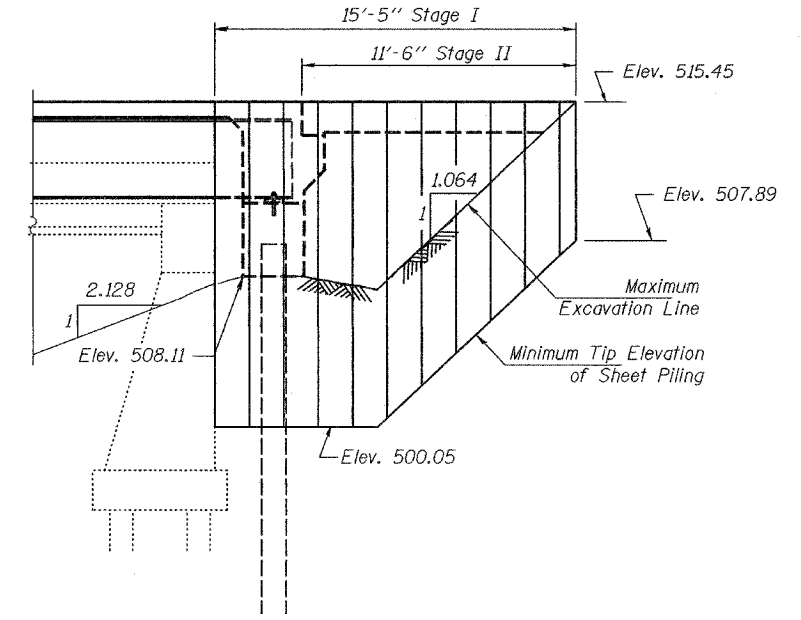
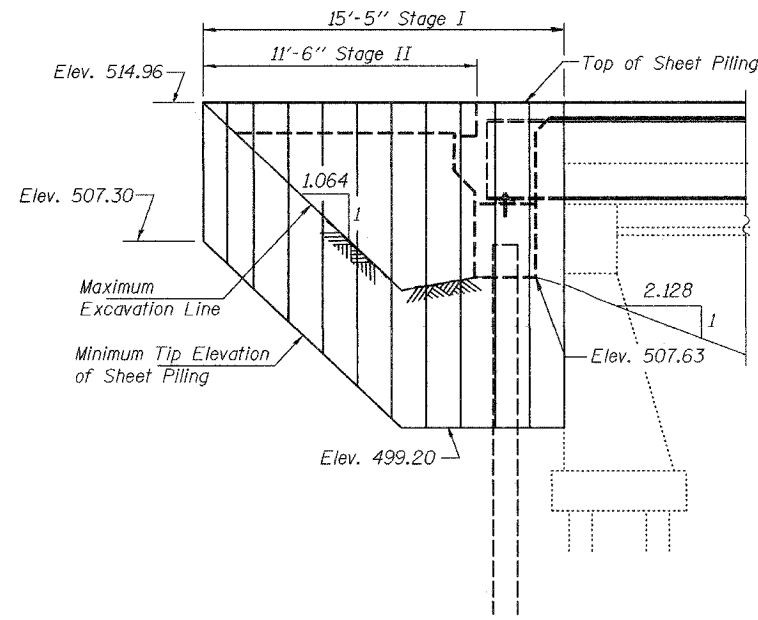


STATE OF ILLINOIS  
DEPARTMENT OF TRANSPORTATION

ROUTE NO.	SECTION	COUNTY	TOTAL SHEETS	SHEET NO.
F.A.P. 692	12-1BR-1	MADISON	27	2
FED. ROAD DIST. NO. 7	ILLINOIS	FED. AID PROJECT		

SHEET NO. 2  
20 SHEETS  
Contract #76386

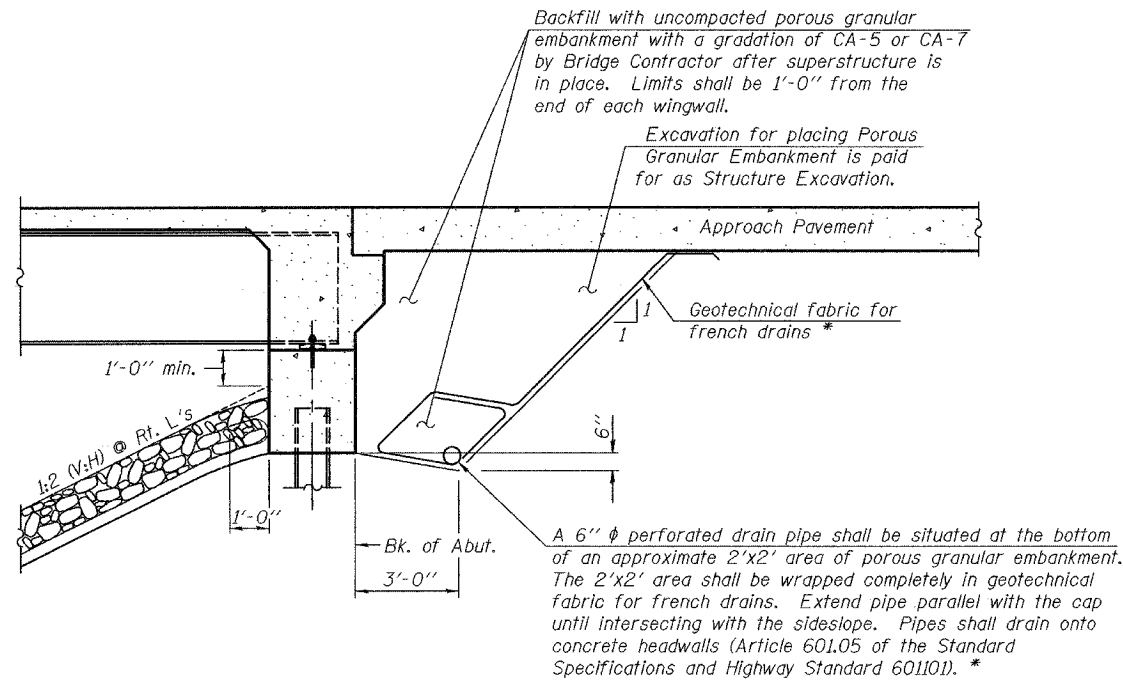


ELEVATION  
NORTH ABUTMENT

ELEVATION  
SOUTH ABUTMENT

TEMPORARY SHEET PILING DETAIL

Notes:  
If the Contractor chooses to alter the temporary cantilevered sheet piling design requirements shown on the plans, a design submittal including plan details and calculations will be required for review and acceptance by the Engineer.  
Minimum section modulus for the Temporary Sheet Piling shall be 7.0 in<sup>3</sup>/ft.  
Slopes and distances shown along 20° skew.



\* Included in the cost of Porous Granular Embankment.

SECTION THRU INTEGRAL ABUTMENT  
(Horiz. dim. @ Rt. L's)

DESIGNED	T. Kurtenbach
CHECKED	Alan Johnson
DRAWN	Paul Summer
CHECKED	TLK AMJ

APPROVED	Apr-11 22, 2005
EXAMINED	Thomas J. Domagalaki ENGINEER OF BRIDGE DESIGN
PASSED	Ralph E. Anderson ENGINEER OF BRIDGES AND STRUCTURES

DETAILS  
F.A.P. ROUTE 692 - SECTION 12-1BR-1  
MADISON COUNTY  
STATION 1440+97.5  
STRUCTURE NO. 060-0335