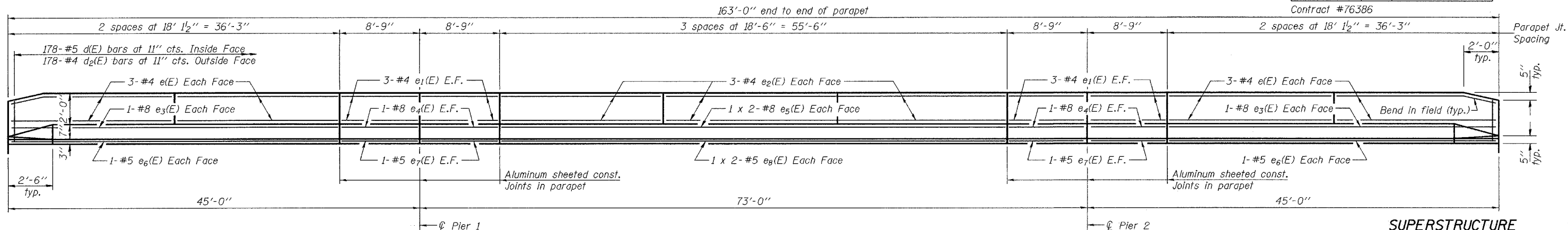


STATE OF ILLINOIS  
DEPARTMENT OF TRANSPORTATION

ROUTE NO.	SECTION	COUNTY	TOTAL SHEETS	SHEET NO.
F.A.P. 692	12-1BR-1	MADISON	33	8
FED. ROAD DIST. NO. 7	ILLINOIS	FED. AID PROJECT-		

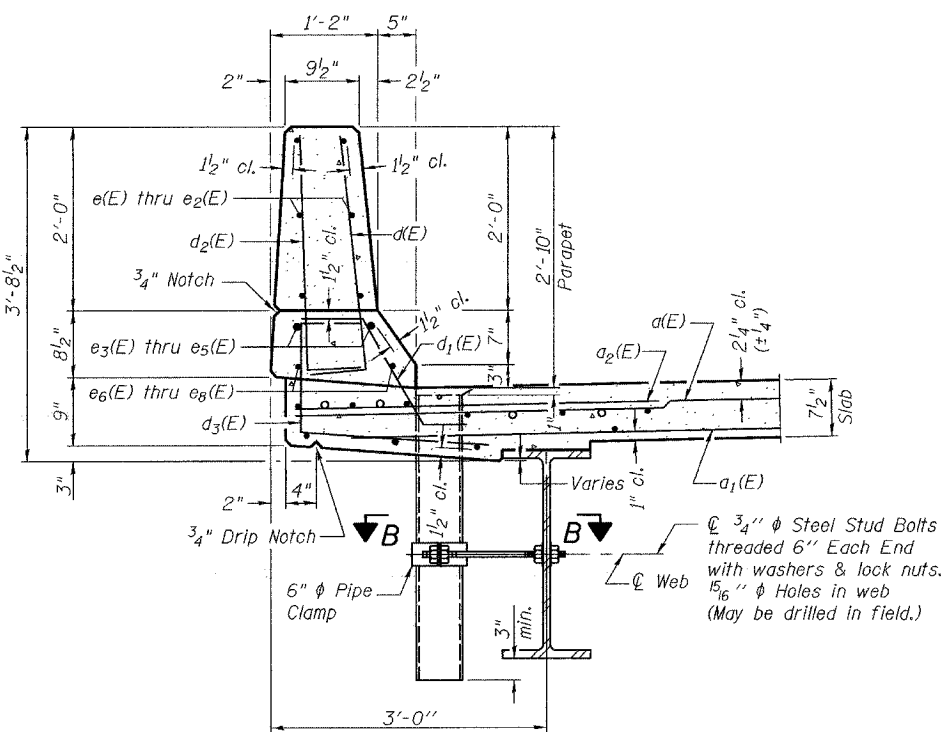
SHEET NO. 8  
20 SHEETS



INSIDE ELEVATION OF PARAPET

SUPERSTRUCTURE  
BILL OF MATERIAL

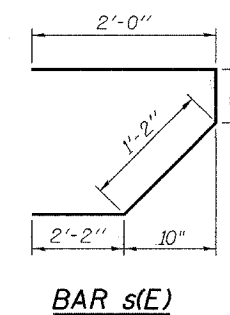
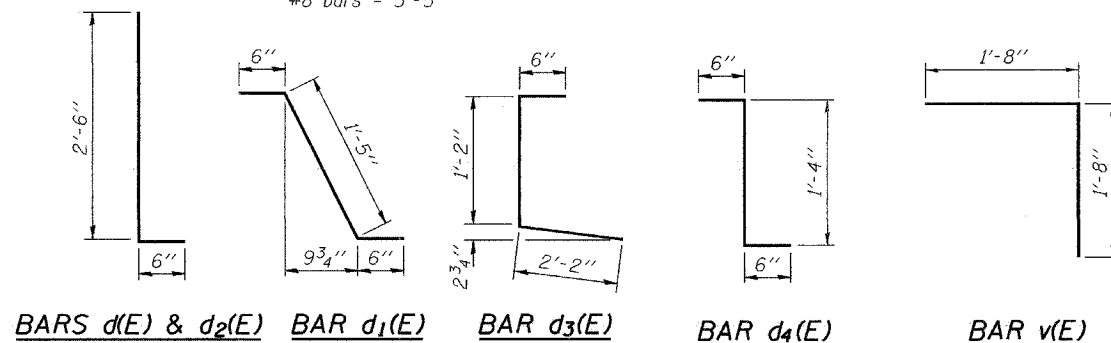
Bar	No.	Size	Length	Shape
a(E)	488	#5	17'-2"	—
a <sub>1</sub> (E)	390	#5	16'-3"	—
a <sub>2</sub> (E)	488	#6	6'-0"	—
a <sub>3</sub> (E)	8	#5	17'-11"	—
b(E)	228	#5	28'-11"	—
b <sub>1</sub> (E)	68	#6	34'-7"	—
b <sub>2</sub> (E)	160	#5	34'-3"	—
d(E)	356	#5	3'-0"	┌
d <sub>1</sub> (E)	344	#5	2'-5"	┌
d <sub>2</sub> (E)	356	#4	3'-0"	┌
d <sub>3</sub> (E)	356	#4	3'-10"	┌
d <sub>4</sub> (E)	12	#5	2'-2"	┌
e(E)	48	#4	17'-10"	—
e <sub>1</sub> (E)	48	#4	8'-6"	—
e <sub>2</sub> (E)	36	#4	18'-3"	—
e <sub>3</sub> (E)	8	#8	36'-0"	—
e <sub>4</sub> (E)	16	#8	8'-6"	—
e <sub>5</sub> (E)	8	#8	29'-4"	—
e <sub>6</sub> (E)	8	#5	36'-0"	—
e <sub>7</sub> (E)	16	#5	8'-6"	—
e <sub>8</sub> (E)	8	#5	28'-6"	—
m(E)	8	#6	17'-8"	—
m <sub>1</sub> (E)	12	#6	18'-5"	—
m <sub>2</sub> (E)	24	#6	8'-10"	—
m <sub>3</sub> (E)	8	#6	5'-10"	—
m <sub>4</sub> (E)	8	#6	2'-10"	—
s(E)	72	#5	5'-11"	┌
s <sub>1</sub> (E)	64	#4	8'-10"	┌
v(E)	68	#5	3'-4"	┌
Reinforcement Bars, Epoxy Coated		Pound		45400
Concrete Superstructure		Cu. Yds.		199.5



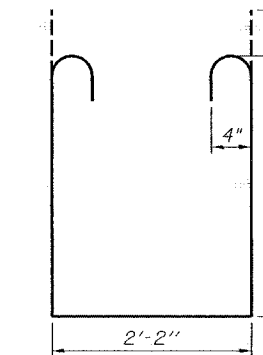
SECTION THRU PARAPET

MIN. BAR LAPS

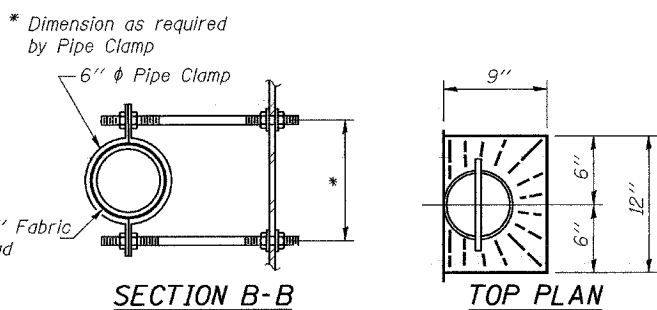
#5 bars = 1'-8"  
#8 bars = 3'-5"



BAR s(E)

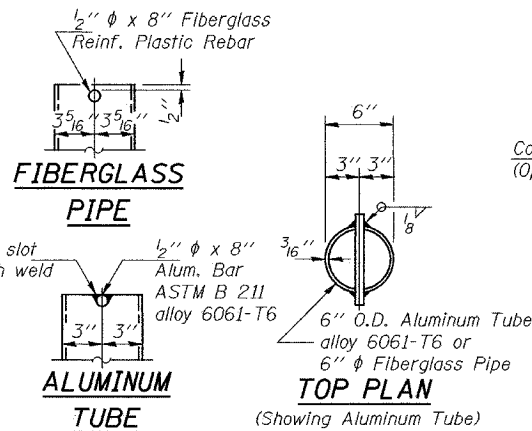


BAR s1(E)



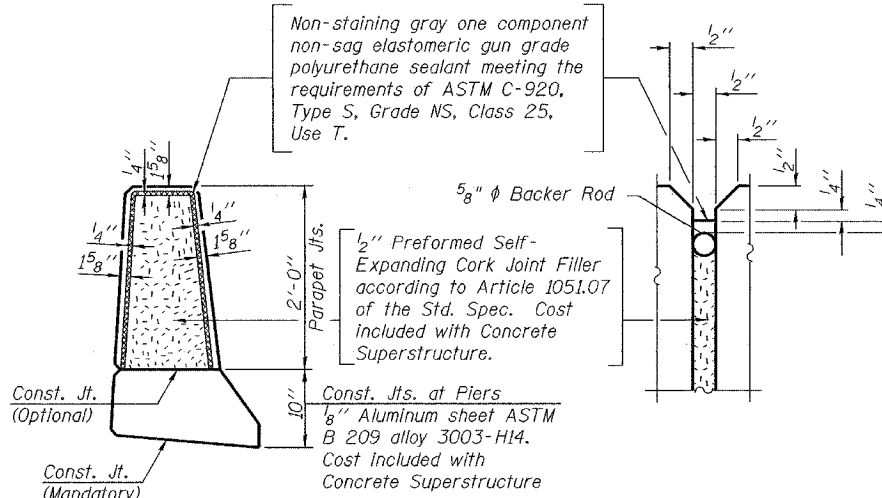
SECTION B-B

TOP PLAN



FIBERGLASS  
PIPE

ALUMINUM  
TUBE



PARAPET JOINT DETAILS

Notes:  
The exterior surfaces of the floor drains shall be painted with the finish coat as specified in the special provisions for Cleaning and Painting New Metal Structures. The exterior surfaces of the drains shall be cleaned according to Steel Structures Painting Council's Spec. SSPC-SP1 prior to painting. Fiberglass pipe shall conform to ASTM D 2996, with short-time rupture strength hoop tensile stress of 30,000 p.s.i. minimum.

DESIGNED	T. Kurtenbach
CHECKED	Alan Johnson
DRAWN	Paul Summer
CHECKED	TLK AMJ

APPROVED	Apr 11 22, 2005
EXAMINED	Thomas J. Domagalaki
PASSED	Ralph E. Anderson

Reinforcement bars designated (E) shall be epoxy coated.  
Bars indicated thus 1 x 2 - #5 etc. indicates 1 line of bars with 2 lengths per line.  
**SUPERSTRUCTURE DETAILS**  
**F.A.P. ROUTE 692 - SECTION 12-1BR-1**  
**MADISON COUNTY**  
**STATION 1440+97.5**  
**STRUCTURE NO. 060-0335**