

STATE OF ILLINOIS  
DEPARTMENT OF TRANSPORTATION

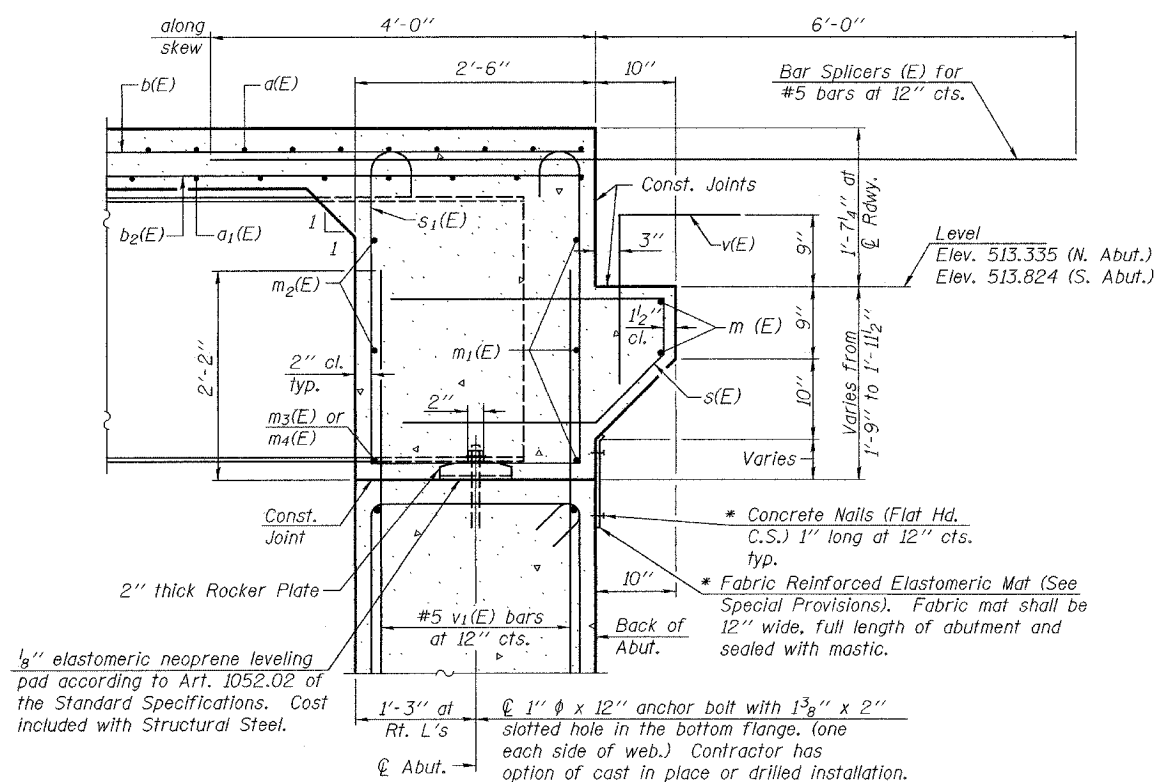
|                       |          |                  |               |           |             |
|-----------------------|----------|------------------|---------------|-----------|-------------|
| ROUTE NO.             | SECTION  | COUNTY           | ISLAND SHEETS | SHEET NO. | SHEET NO. 9 |
| F.A.P. 692            | 12-IBR-1 | MADISON          |               | 34        | 20 SHEETS   |
| FED. ROAD DIST. NO. 7 | ILLINOIS | FED. AID PROJECT |               |           |             |

Contract #76386

Notes:  
Reinforcement bars in diaphragm are billed with superstructure on sheet 8 of 20.  
Concrete in diaphragm is included with Concrete Superstructure on sheet 8 of 20.  
For details of bars s(E) & s<sub>1</sub>(E) see sheet 8 of 20.  
The s(E) and s<sub>1</sub>(E) bars shall be placed parallel to the beams. Spacing for these bars shall be at right angles to the beams.  
For anchor bolt details see sheet 13 of 20.  
For Bar Splicer details see sheet 17 of 20.

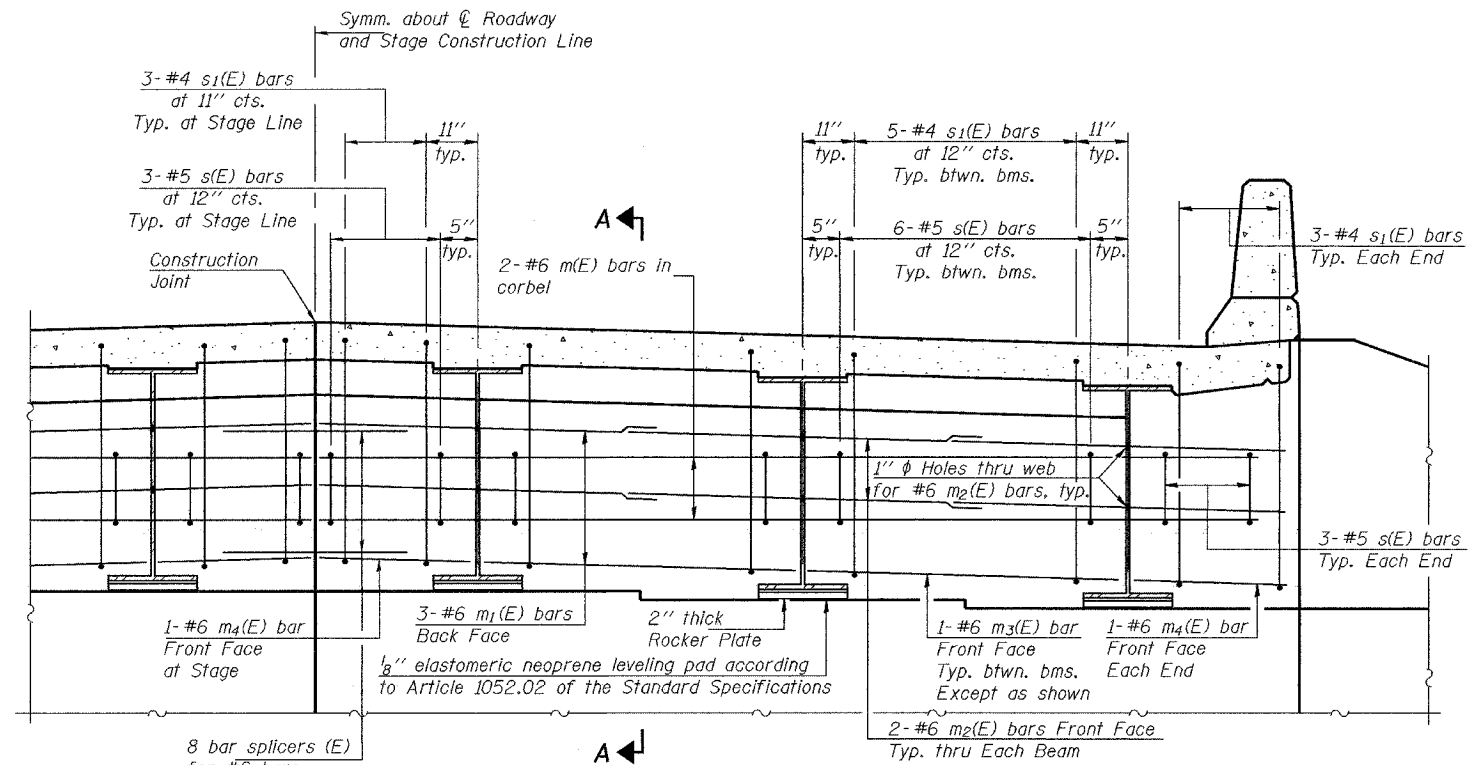
**MIN. BAR LAP**

#6 bar = 2'-7"



**SECTION A-A**

Dimensions at right angles to abutment, except as shown.  
\* Cost included with Concrete Superstructure.



**DIAPHRAGM ELEVATION AT ABUTMENT**

|          |               |
|----------|---------------|
| DESIGNED | T. Kurtenbach |
| CHECKED  | Alan Johnson  |
| DRAWN    | Paul Summer   |
| CHECKED  | TLK AMJ       |

APR 12 2005

EXAMINED *Thomas J. Domagalaki*  
ENGINEER OF BRIDGE DESIGN

PASSED *Ralph E. Anderson*  
ENGINEER OF BRIDGES AND STRUCTURES

**DIAPHRAGM DETAILS**  
F.A.P. ROUTE 692 - SECTION 12-IBR-1  
MADISON COUNTY  
STATION 1440+97.5  
STRUCTURE NO. 060-0335