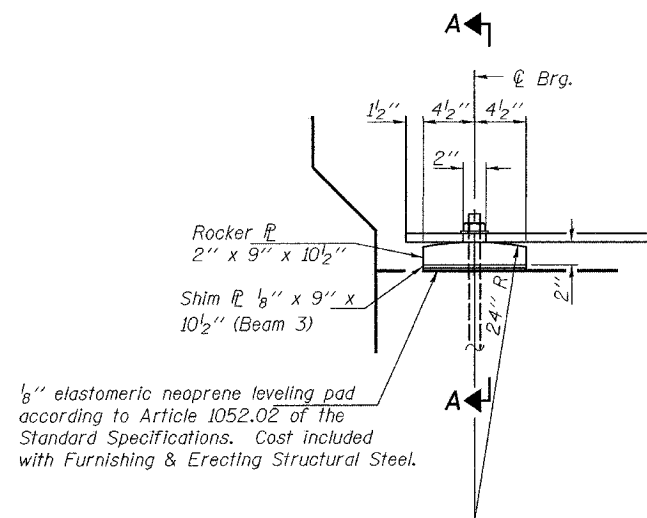


STATE OF ILLINOIS
DEPARTMENT OF TRANSPORTATION

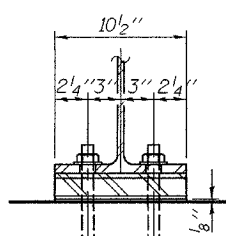
ROUTE NO.	SECTION	COUNTY	SHEETS	SHEET	SHEET NO. 12 20 SHEETS
F.A.P. 692	12-IBR -1	MADISON		37	
FED. ROAD DIST. NO. 7	ILLINOIS		FED. AID PROJECT		

Contract #76386



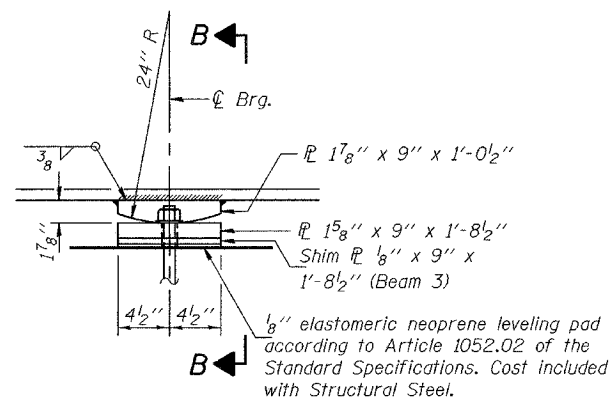
ELEVATION AT ABUTMENT

FIXED BEARING
12 Required



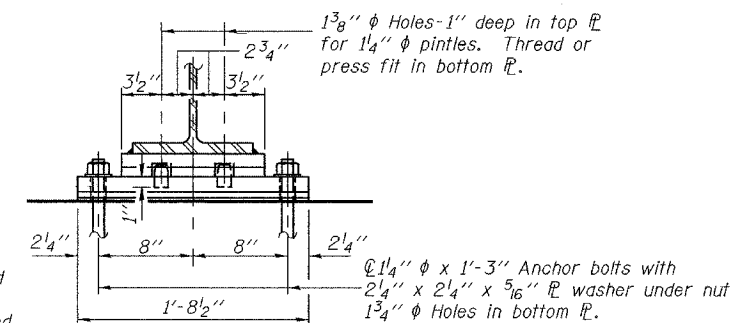
SECTION A-A

1" ϕ x 12" anchor bolts with 2 1/4" x 2 1/4" x 5/16" \mathbb{P} washer under nut. 1 3/8" x 2" slotted holes in bottom flange. The Contractor has the option of cast in place, or drilled construction.

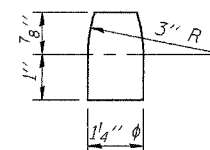


ELEVATION AT PIER

FIXED BEARING
12 Required



SECTION B-B



PINTLE

Notes:
The plates and pintles of the fixed bearings shall be AASHTO M 270 Grade 50, except shim plates.
For Anchor Bolt installation details, see sheet 13 of 20.
Anchor bolts at fixed bearings may be built into the masonry.

DESIGNED	T. Kurtenbach
CHECKED	Alan Johnson
DRAWN	Paul Summer
CHECKED	TLK AMJ

EXAMINED	Thomas J. Domagalaki ENGINEER OF BRIDGE DESIGN
PASSED	Ralph E. Anderson ENGINEER OF BRIDGES AND STRUCTURES

BEARING DETAILS
F.A.P. ROUTE 692 - SECTION 12-IBR-1
MADISON COUNTY
STATION 1440+97.5
STRUCTURE NO. 060-0335