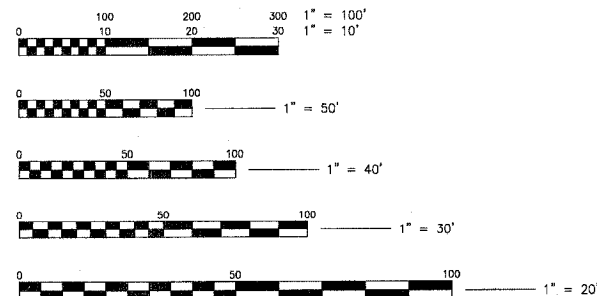


SHEET NO.	TITLE
1.	COVER SHEET
2.	LEGEND, ABBREVIATIONS, GENERAL NOTES, BENCHMARKS AND SUMMARY OF QUANTITIES
3.	TYPICAL SECTIONS
4.	SCHEDULE OF MATERIALS
5.	PLAN & PROFILES: SOLARI DR. & PARK AVE. STA. 9+40 TO STA. 14+00
6.	PLAN & PROFILES: PARK AVE. STA. 14+00 TO STA. 20+19.34
7.	PLAN & PROFILES: RAVISLOE TERRACE STA. 29+29.40 TO STA. 33+95.28
8.	PLAN & PROFILES: FAIRWAY TERRACE STA. 40+24.58 TO STA. 44+50
9.	PLAN & PROFILES: FAIRWAY TERRACE STA. 44+50 TO STA. 49+50
10.	PLAN & PROFILES: FAIRWAY TERRACE STA. 49+50 TO STA. 53+75.93
11.	PLAN & PROFILES: PULASKI AVENUE STA. 67+23.22 TO STA. 71+50
12.	PLAN & PROFILES: PULASKI AVENUE STA. 71+50 TO STA. 76+38.48
13.-14.	EROSION & SEDIMENT PLAN
15.	RIGHT OF WAY ACQUISITION
16.	DISTRICT 1 TRAFFIC CONTROL & PROTECTION FOR SIDE ROADS
17.	DISTRICT 1 PAVEMENT MARKING DETAILS
18.	MISCELLANEOUS DETAILS
19.-26.	CROSS SECTIONS

STANDARD NO.	STANDARD
00001-04	STANDARD SYMBOLS, ABBREVIATIONS AND PATTERNS
28001-02	TEMPORARY EROSION CONTROL SYSTEMS
42401-03	SIDEWALK RAMPS ACCESSIBLE TO THE DISABLED
44201-01	CLASS C AND D PATCHES
602301	INLET, TYPE A
60400-02	FRAME AND LIDS, TYPE I
60405-01	FRAME AND GRATE, TYPE IV
60800-02	CONCRETE CURB, TYPE B AND COMBINATION CURB AND GUTTER (SHT. 1 & 2)
70130-02	LANE CLOSURE 2L, 2W SHORT TIME OPERATIONS
70150-02	URBAN LANE CLOSURE, 2L, 2W UNDIVIDED
70160-04	URBAN LANE CLOSURE, MULTI-LANE 2W WITH MOUNTABLE MEDIUM
70170-04	URBAN LANE CLOSURE, MULTI-LANE INTERSECTION
70180-03	LANE CLOSURE, MULTI-LANE 1W, OR 2W CROSSWALK OR SIDEWALK CLOSURE
70200-06	TRAFFIC CONTROL DEVICES (SHT 1, 2 & 3)
720006	SIGN ERECTION DETAILS (SHT 1 & 2)
780001-01	TYPICAL PAVEMENT MARKINGS
878001-03	CONCRETE FOUNDATION DETAILS

CALL JULIE 1-800-892-0123 WITH THE FOLLOWING:
 COUNTY - COOK
 CITY - TWINSIP - BREMEN
 SEC. & SECC. NO. - 34, S.E. 1/4
 48 HOURS BEFORE YOU DIG EXCLUDING SAT., SUN. & HOLIDAYS



FULL SIZE PLANS HAVE BEEN PREPARED USING STANDARD ENGINEERING SCALES. REDUCED SIZED PLANS WILL NOT CONFORM TO STANDARD SCALES. IN MAKING MEASUREMENTS ON REDUCED SIZE PLANS, THE ABOVE SCALES SHALL BE USED.

CONTRACT NO. 83742

Copyright © 2003, by BAXTER & WOODMAN, INC. ALL RIGHTS RESERVED. NO PART OF THESE DRAWINGS MAY BE REPRODUCED OR OTHERWISE USED WITHOUT WRITTEN PERMISSION OF BAXTER & WOODMAN, INC.

STATE OF ILLINOIS

DEPARTMENT OF TRANSPORTATION

DIVISION OF HIGHWAYS

PLANS FOR PROPOSED AMPHITHEATER SHARED-USE PATH

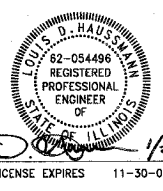
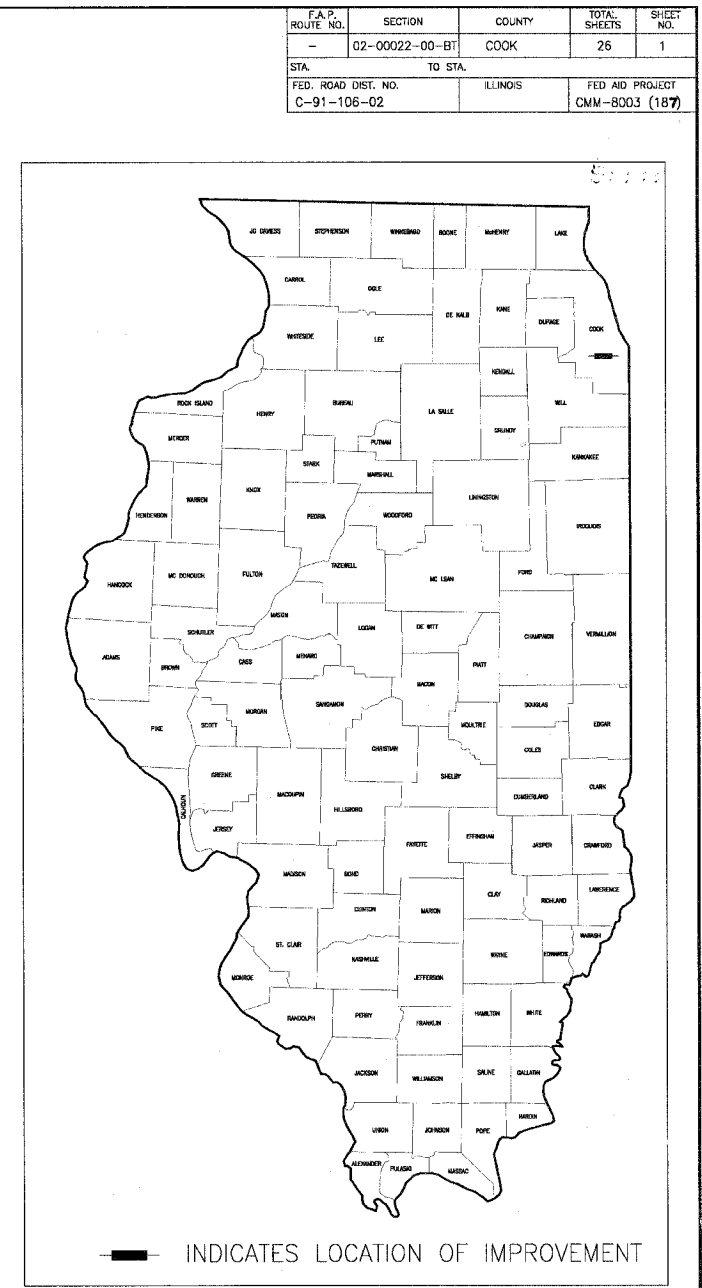
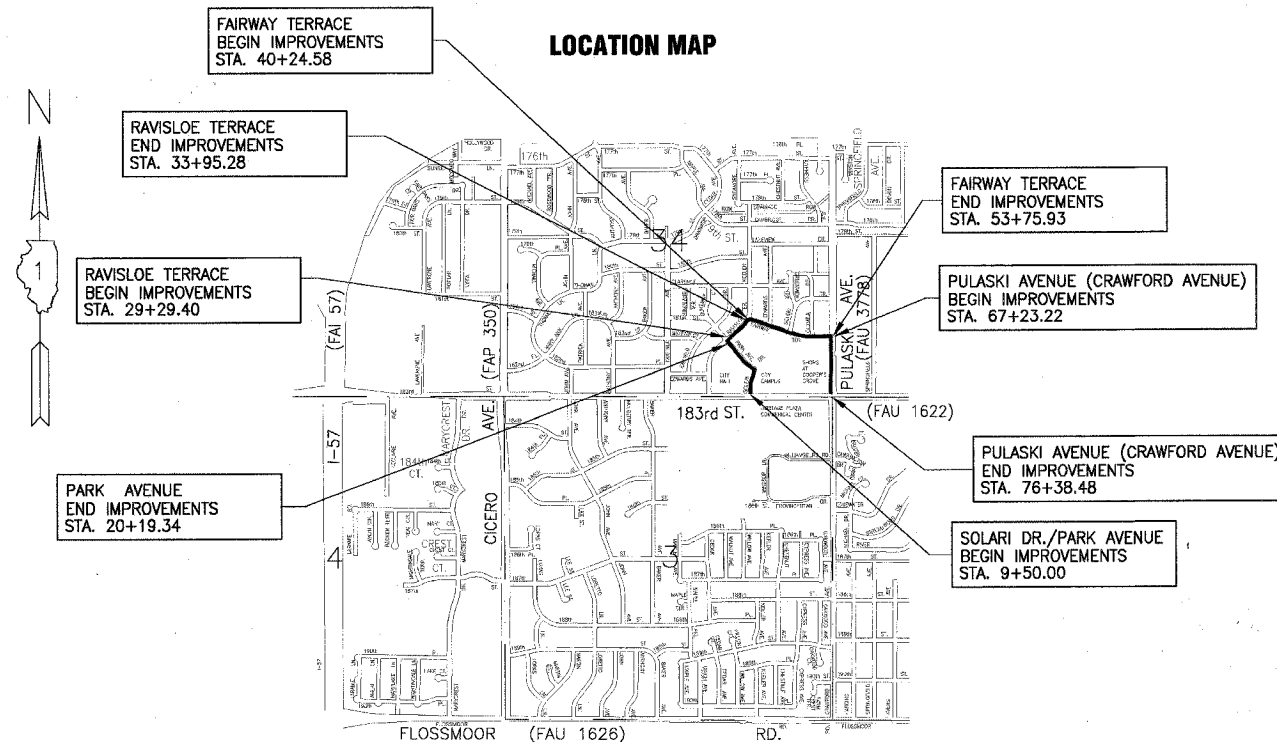
PROJECT NO.: CMM-8003 (187)

SECTION: NUMBER: 02-00022-00-BT

CITY OF COUNTRY CLUB HILLS, ILLINOIS

COOK COUNTY

JOB NUMBER: C-91-106-02



John J. Pugh
 PROJECT ENGINEER

GROSS LENGTH OF IMPROVEMENT = 3,801.83 LIN. FT. OR 0.720 MILES
 NET LENGTH OF IMPROVEMENT = 3,801.83 LIN. FT. OR 0.720 MILES



BAXTER & WOODMAN, INC.
 STATE OF ILLINOIS - PROFESSIONAL DESIGN FIRM
 LICENSE NO. - 184-001121 - EXPIRES 4/30/2005

Baxter & Woodman
 Burlington, Wisconsin 414.763.7834
 Crystal Lake, Illinois 815.459.1260
 DeKalb, Illinois 815.787.3111
 Grayslake, Illinois 847.223.5088
 Mokena, Illinois 708.478.2090
 (OFFICE WHICH PREPARED PLANS)

STATE OF ILLINOIS
 DEPARTMENT OF TRANSPORTATION
 DIVISION OF HIGHWAYS

APPROVED 01/28 *[Signature]* LOCAL AGENCY REPRESENTATIVE
 APPROVED 2/19 *[Signature]* LOCAL AGENCY REPRESENTATIVE
 APPROVED February 19 *[Signature]* DISTRICT ENGINEER

I.D.O.T. FEDERAL AID DESIGN ENGINEER: MAZHAR KHAN, (847) 705-4179